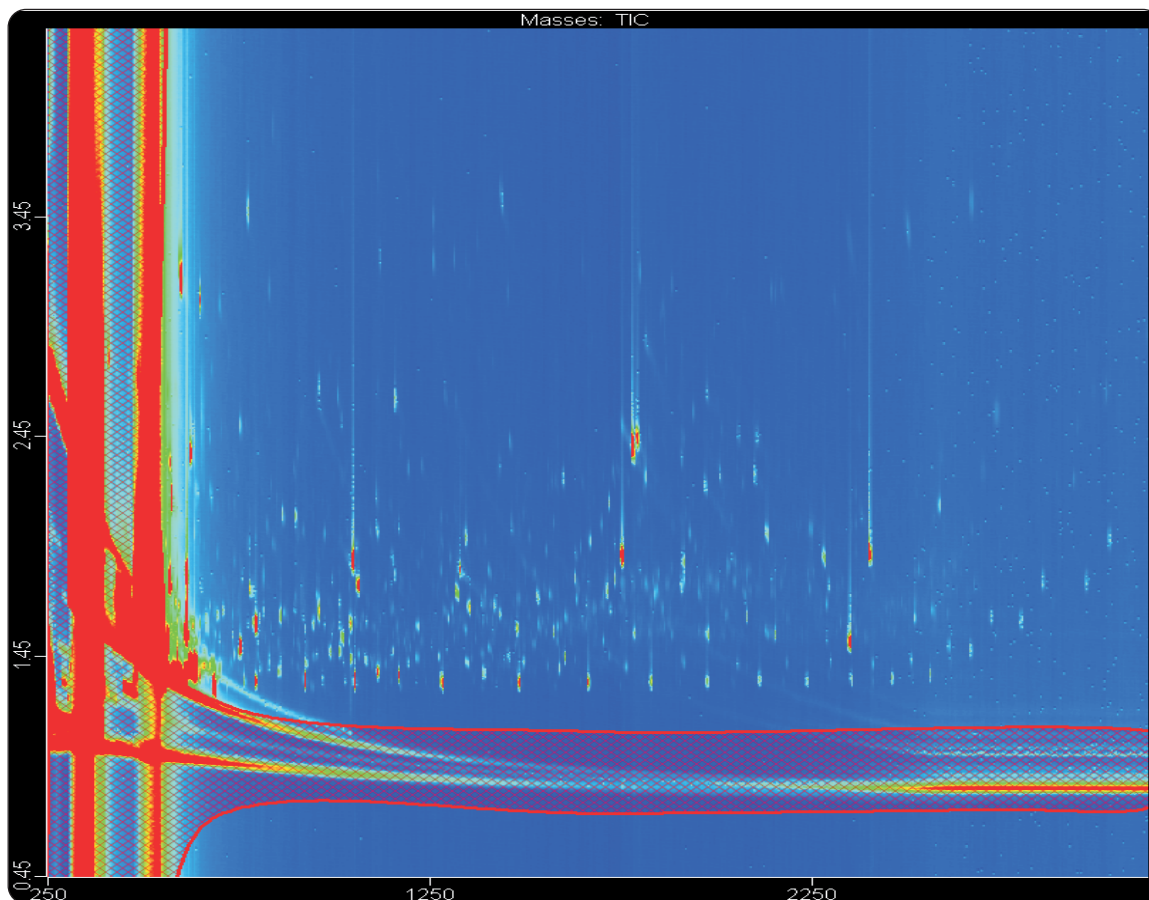


GCxGC-TOFMS Analysis of TMS Derivatives in Urine From a Type I Diabetic Subject for Small Molecule Metabolite Profile

Life Science and Chemical Analysis Centre
LECO Corporation, Saint Joseph, Michigan USA



GCxGC-TOFMS analysis of Type 1 Diabetic urine sample for disease profiling prepared by methylene chloride extraction with TMS derivatization. 2110 peaks found at a signal to noise of 50 or greater.

Columns:

30 m x 0.25 mm x 0.25 μ m Rtx-5ms
1.5 m x 0.18 mm x 0.2 μ m Rtx-200

TOFMS:

45 to 800 m/z @ 200 spectra/s

For questions on this analysis
e-mail us at: life_science@leco.com

For a complete listing of snapshots
and application notes visit us on the
web at www.leco.com



Application Snapshot

