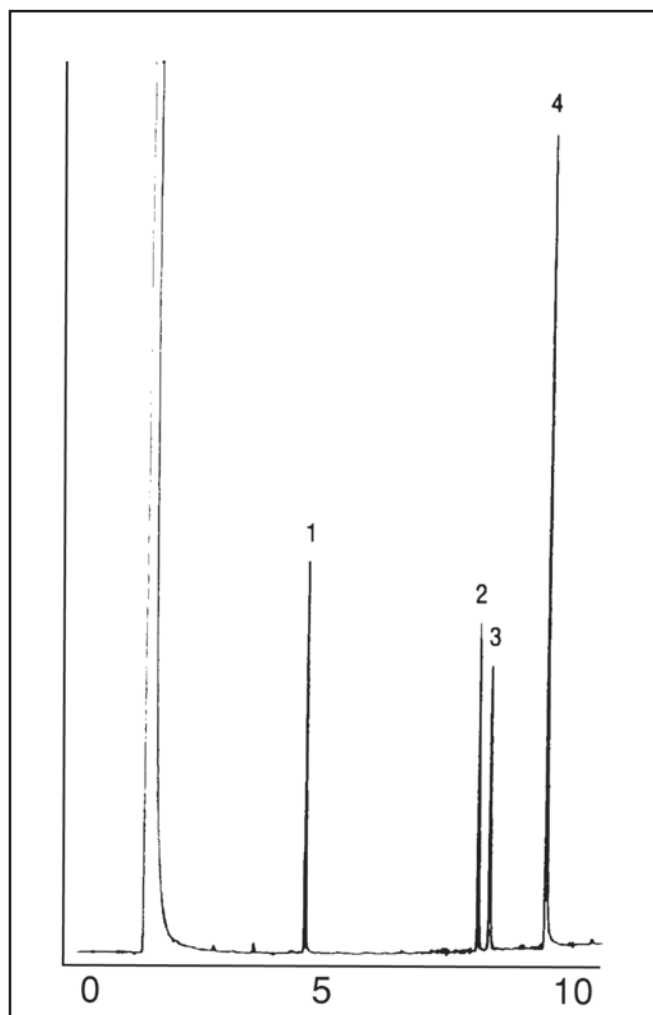


GC CAPILLARY COLUMN APPLICATIONS: CLINICAL/TOXOLOGICAL

Morphine Substitute Standards

COLUMN: 007-17, (50% Phenyl)
Methylpolysiloxane 25M. x
0.32mm I.D. x 0.25 μ m film
Cat. No.: 007-17-25W-0.25F
Temperature: 170° (10°/min.) -280°C
Injector: 230°C
Detector: 300°C, FID
Carrier Gas: 23 cm/sec., Helium

1. Meperidine
2. Pentazocaine
3. Methadone
4. d-Methorphan



PO Box 3881, Woodbridge, CT 06525 • (203) 393-3112 • FAX (203) 393-0391
TOLLFREE: 800-275-7033 • E-MAIL: tech@quadrexcorp.com