

# Application News

High Performance Liquid Chromatography

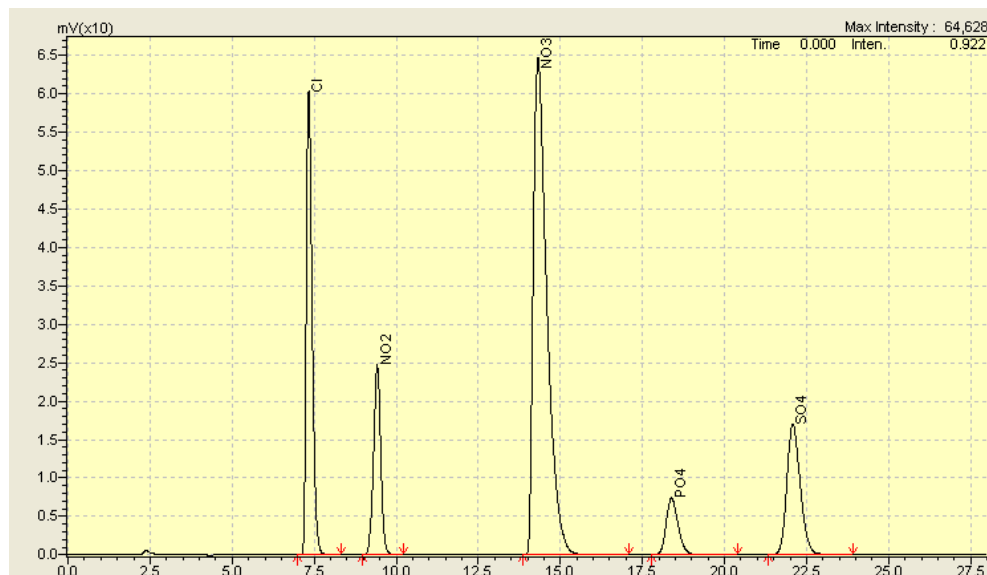
SSI LC 002

## Analysis of Water Treatment Samples

### Method

Column: Shodex; IC SI-52 4E 4.0 x 250 mm, 5  $\mu$ m  
Mobile Phase: 3.2 mM  $\text{Na}_2\text{CO}_3$  and 1.0 mM  $\text{NaHCO}_3$   
Flow Rate: 1.0 mL/min  
Column Oven: 40  $^\circ\text{C}$   
Detector: CDD-10Avp  
Suppressor: SeQuant: Continuous Anion Regeneration System (CARS)  
SeQuant: Anion Suppressor Cartridge (SAMS)  
Inj. Vol.: 20  $\mu\text{L}$   
Run Time: 27 mins

### Standards



LOD:

- Lower Limit of Detection
  - Chloride- 0.2 ppm
  - Nitrite- 0.2 ppm
  - Nitrate- 0.2 ppm
  - Phosphate- 0.5 ppm
  - Sulfur- 0.5 ppm