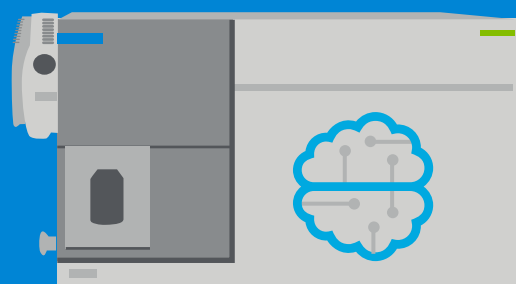
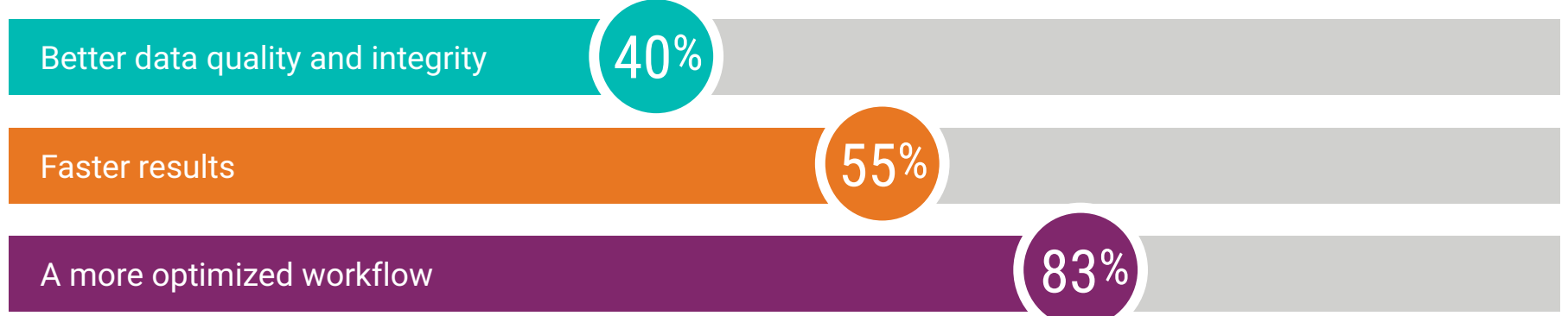


# What Stops Pharma Labs From Reaching Their Full Potential?

Agilent teamed up with Frost & Sullivan to conduct a global survey focusing on the challenges and pain points that labs deal with every day. Here's what pharma lab leaders are concerned about most.

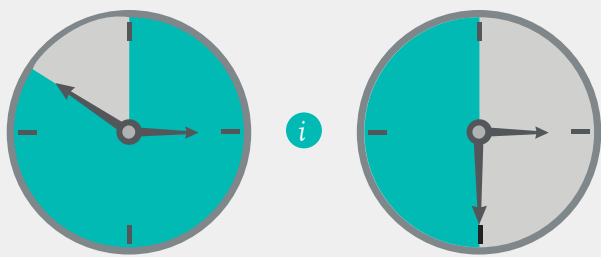


## Unbelievably powerful, remarkably intelligent

Building on a trusted LC/TQ platform, the Agilent 6475 triple quadrupole LC/MS empowers your lab to minimize your cost of ownership while meeting the demands of an evolving industry. Want a closer look? Just click the ⓘ icons below.

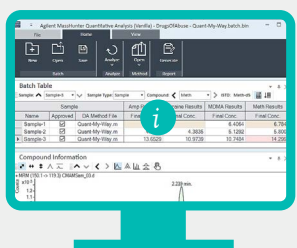
### Maximize data quality and integrity

Save 20 minutes and maintain consistent tuning



Without SWARM

With SWARM



Compliance ready with MassHunter software for LC/MS

### Drive your productivity with faster results

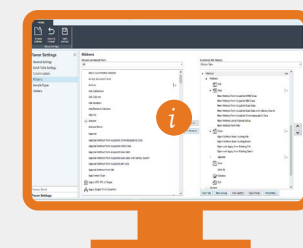
Higher throughput using fast screening Intelligent Reflex workflows



Carryover detection

Above cal. curve

Fast screening

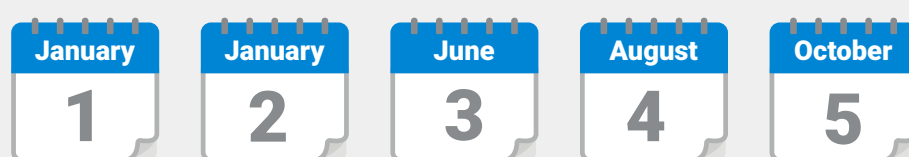
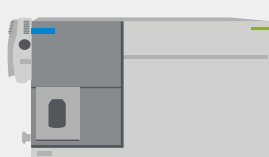
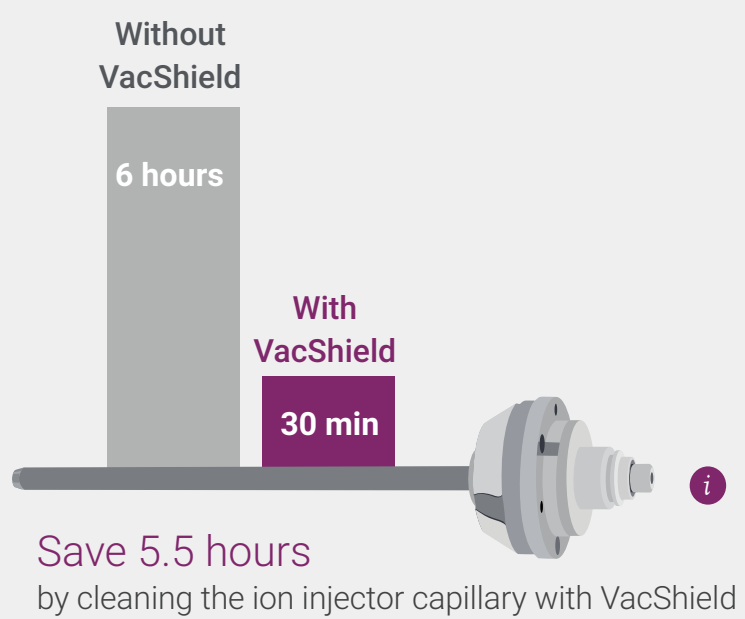


Less time from analysis to reporting with Quant-My-Way

### Optimize your workflow from start to finish



No more guesswork  
Early maintenance feedback reports on system health in real time



## Up to five more days of usable lab time per year

All of these innovations help you maximize your lab's most precious resource: **time**

Discover instrument intelligence that powers productivity. [www.agilent.com/chem/6475](http://www.agilent.com/chem/6475)

