

FOOD for Thought

WHY NOW?

The [world's] food supply is very complex... and at every step along the way there are opportunities for the introduction of contamination..."

- FDA Commissioner, Margaret Hamburg

*APEC.FSEF.PTIN.2011

Growing Laboratory Demands

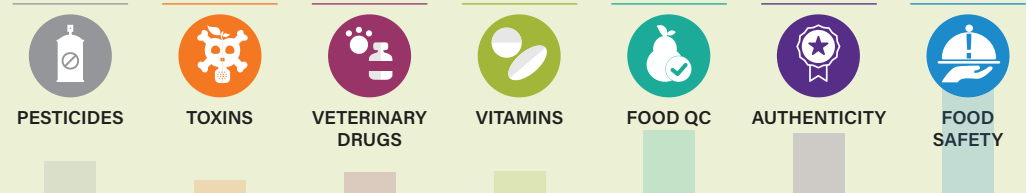
Food safety testing laboratories face numerous scientific and operational challenges:

- meeting mandated detection limits
- developing sample preparation techniques for complex matrices
- increasing sample throughput

CATEGORIES:

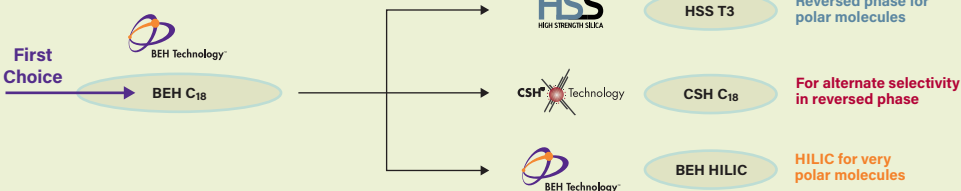


Applications



Sample Extraction, Cleanup, and Separation Technologies

WHICH COLUMN IS RIGHT FOR YOU?



DisQUE™
Dispersive Sample Preparation
A dispersive solid-phase extraction, pre-measured for use with both:



Sep-Pak™
Sample Extraction Products

17 Sorbents for food applications



Faster, Easier, and More Accurate



Applications



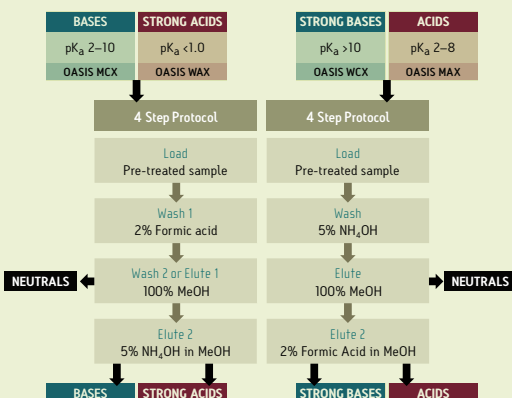
Oasis™ PRiME HLB

Reduces Phospholipids by at least **90%** compared to Oasis HLB



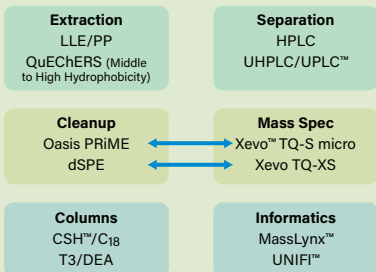
Simultaneously removes the three major food matrix interferences (fats, phospholipids and pigments)

OASIS 2 X 4 METHOD DEVELOPMENT PROTOCOL

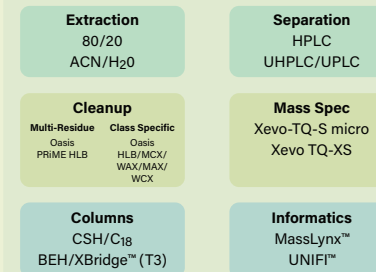


Easily Meet or Exceed Regulatory Detection Limits

Pesticides



Vet Drugs



You can find out more at: waters.com/spe