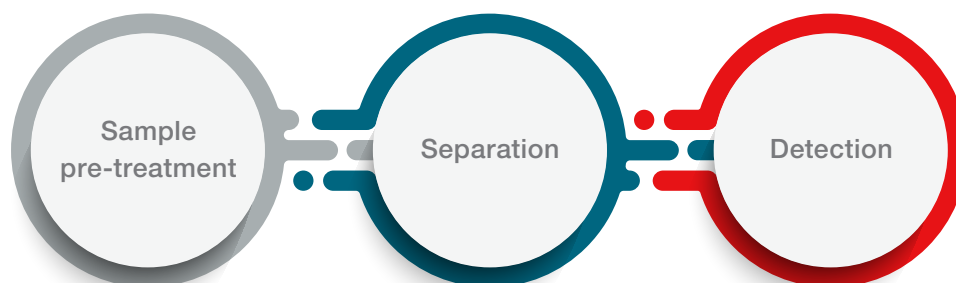


# Success with bioanalysis is a sum of the parts

Are you tasked with providing high quality analytical liquid chromatography-mass spectrometry (LC-MS) results from complex biological samples, as well as complying with strict legislation? Thermo Fisher Scientific has a strong product portfolio to support each step of your analysis so that you may achieve your goals.

## Confidence comes from optimizing each step of the analysis



Prepare your samples with [Thermo Scientific™ SOLA™ SPE cartridges and plates](#) to enable greater sample throughput with low elution volumes. Benefit from greater reproducibility, lower failure rates, and cleaner extracts.

Maintain sample security and quality of the sample with [Thermo Scientific™ MS certified vials](#), which are pre-cleaned and packaged to remove sub-micron particles that can affect background noise in your chromatography. Alternatively, for higher throughput, [Thermo Scientific™ WebSeal Plate+ 96-Well Glass-Coated Microplates](#) are a cost-effective option for eliminating the need to use limited volume glass inserts.

Separate your analytes with [Thermo Scientific™ Accucore™ RP-MS LC columns](#) to achieve the best signal-to-noise response. This solid core column has the properties of a C18 separation with low bleed, on a rugged platform, perfect for your high throughput analysis.

Confidently quantify your analytes and meet regulatory requirements with easy-to-use [Thermo Scientific™ Triple Quadrupole LC-MS instruments](#).

### Optimizing each step in your analysis can:

- Reduce method development time
- Reduce repeat analysis
- Reduce method validation time
- Increase data quality

## Lower background noise

Sample clean up and optimum storage before LC-MS analysis leads to lower background noise and less carryover. Removing the background typically reduces ion suppression in the source which can fluctuate between samples and reduce the accuracy of results.

## Improved chromatography

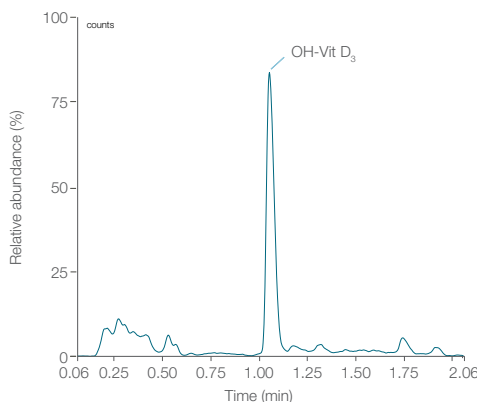
Efficient sample clean up and high resolution separation of analytes improves method lower limit of quantification (LLOQ), and allows you to more comfortably meet regulatory requirements.

The Accucore RP-MS column is the perfect complementary column to ensure confidence in your results. The columns, together with SOLA SPE products, provide cleaner, more reproducible chromatograms, reduced method development time, eliminating troubleshooting demands, day-to-day analytical failures, and repeat analysis.

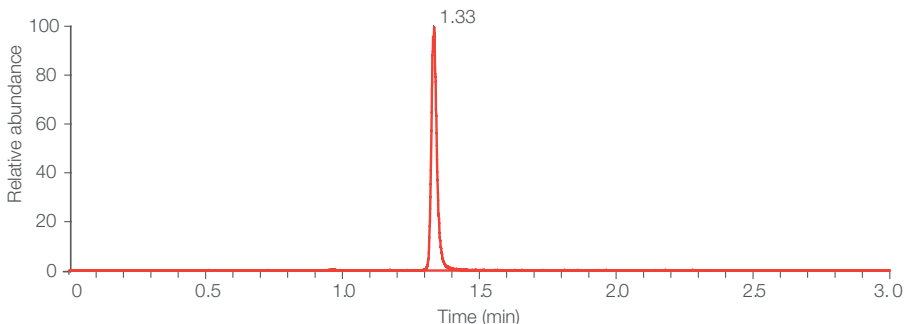
## Reproducible data

The quality of mass spectrometric data is improved when cleaner, well separated analytes are being measured, providing reproducible LLOQs and better injection-to-injection reproducibility.

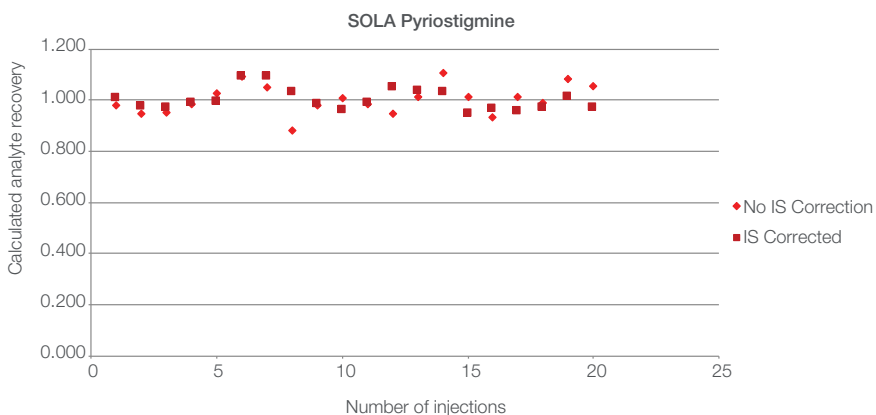
Reliable data can be reported efficiently to support the smooth running of a laboratory, and the release of products.



Chromatogram and extraction reproducibility data for 25-hydroxyvitamin D<sub>3</sub> (IS-corrected with <sup>13</sup>C<sub>5</sub>-OH-Vitamin D<sub>3</sub>) at 150 ng/mL (mid-QC) in 1 mL human plasma.



Niflumic acid in human plasma, prepared using SOLA SPE products and separated using Accucore RP-MS columns.



Recovery of Pyriostigmine from human plasma using SOLA SPE products.

Find out more at [thermofisher.com/chromatographyconsumables](http://thermofisher.com/chromatographyconsumables)