

Shimadzu LC Column Kits for Shimadzu HPLC/UHPLC Systems

Shim-pack Method Development Column Kit

CoreFocus



LC column kits for optimal column selection



Kit types		HPLC	UHPLC	HPLC (LC-MS)	UHPLC (LC-MS)
① L1 Kit for HPLC	C18 only	⊙			
② L1 Kit for HPLC / UHPLC (LC-MS)	C18 only	⊙	⊙	⊙	⊙
③ Maximum Selectivity RP Kit for HPLC / UHPLC Type A		⊙	⊙	○	○
④ Maximum Selectivity RP Kit for HPLC / UHPLC Type B		⊙	⊙	○	○
⑤ Maximum Selectivity RP Kit for HPLC / UHPLC (LC-MS)		○	○	⊙	⊙

*These column kits do not guarantee the appropriate separation for customer analyses.

⊙: Most suitable

○: Compatible

■ Kit composition columns

① L1 Kit for HPLC					
For HPLC (150 mm × 4.6 mm I.D., 5 μm)					
Scepter C18-120	227-31020-05	227-32810-01			
Scepter HD-C18-80	227-31024-05				
Arata C18	227-32805-04				
GISS C18	227-30061-06				
GIST C18-AQ	227-30742-07				
Velox C18	227-32012-03				

② L1 Kit for HPLC / UHPLC (LC-MS)					
For HPLC (150 mm × 4.6 mm I.D., 5 μm)			For UHPLC (100 mm × 2.1 mm I.D., 1.8 / 1.9 / 2 μm)		
Scepter C18-120	227-31020-05	227-32810-02	Scepter C18-120	227-31012-05	227-32810-03
GISS C18	227-30061-06		GISS C18	227-30048-02	
GIST C18	227-30017-07		GIST C18	227-30001-04	
GIST C18-AQ	227-30742-07		GIST C18-AQ	227-30807-02	
Velox C18	227-32012-03		Velox C18	227-32007-03	
Velox SP-C18	227-32006-03		Velox SP-C18	227-32001-03	

③ Maximum Selectivity RP Kit for HPLC / UHPLC Type A					
For HPLC (150 mm × 4.6 mm I.D., 5 μm)			For UHPLC (100 mm × 2.1 mm I.D., 1.8 / 1.9 μm)		
Scepter C18-120	227-31020-05	227-32810-04	Scepter C18-120	227-31012-05	227-32810-05
Scepter HD-C18-80	227-31024-05		Scepter HD-C18-80	227-31026-05	
Scepter C8-120	227-31041-05		Scepter C8-120	227-31033-05	
Scepter Phenyl-120	227-31071-05		Scepter Phenyl-120	227-31063-05	
Scepter PFPP-120	227-31061-05		Scepter PFPP-120	227-31053-05	
Velox Biphenyl	227-32018-03		Velox Biphenyl	227-32013-03	

④ Maximum Selectivity RP Kit for HPLC / UHPLC Type B					
For HPLC (150 mm × 4.6 mm I.D., 5 μm)			For UHPLC (100 mm × 2.1 mm I.D., 1.8 / 1.9 / 2 / 3 μm)		
GIST C18	227-30017-07	227-32810-06	GIST C18	227-30001-04	227-32810-07
GIST C18-AQ	227-30742-07		GIST C18-AQ	227-30807-02	
GIST C8	227-30173-07		GIST C8	227-30160-04	
GIST Phenyl-Hexyl	227-30690-05		GIST Phenyl-Hexyl	227-30713-03	
Velox PFPP	227-32024-03		Velox PFPP	227-32019-03	
Velox Biphenyl	227-32018-03		Velox Biphenyl	227-32013-03	

⑤ Maximum Selectivity RP Kit for HPLC / UHPLC (LC-MS)					
For HPLC (150 mm × 4.6 mm I.D., 5 μm)			For UHPLC (100 mm × 2.1 mm I.D., 1.8 / 1.9 μm)		
Scepter C18-120	227-31020-05	227-32810-08	Scepter C18-120	227-31012-05	227-32810-09
GIST C18-AQ	227-30742-07		GIST C18-AQ	227-30807-02	
GISS C18	227-30061-06		GISS C18	227-30048-02	
Velox C18	227-32012-03		Velox C18	227-32007-03	
Velox PFPP	227-32024-03		Velox PFPP	227-32019-03	
Velox Biphenyl	227-32018-03		Velox Biphenyl	227-32013-03	

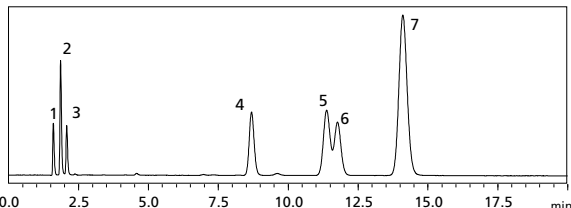
① L1 Kit For HPLC

Peaks

1. Uracil	5. o-Terphenyl
2. Caffeine	6. Amylbenzene
3. Phenol	7. Triphenylene
4. Butylbenzene	

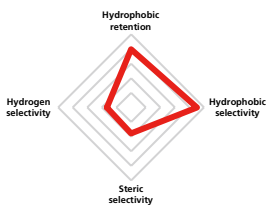
Shim-pack Scepter™ C18-120

Full-porous organosilica C18 Preparative columns are available



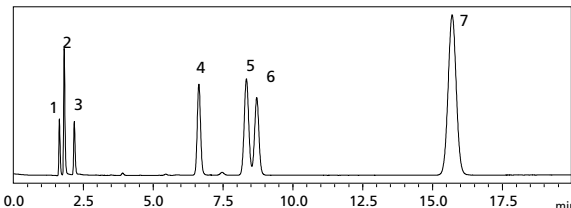
Features :

- Uses organosilica base material with high chemical durability
- Universal C18 column
- High pH tolerance. Three different column bodies can be selected to suit the sample
*The P/N in this brochure has a stainless body
- An inert body (Claris) is the first choice in reversed-phase nucleic acid drug analysis



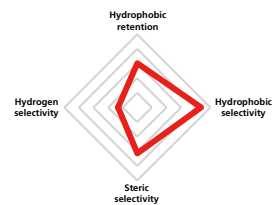
Shim-pack Arata™ C18

Full-porous silica C18



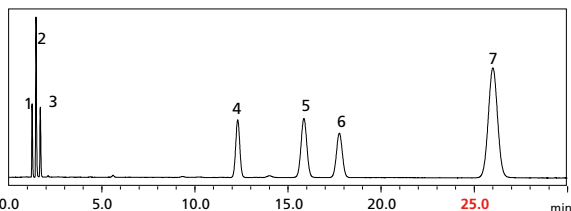
Features :

- Has a unique endcap treatment
- Rapid column equilibration under formic acid/acetic acid mobile phase conditions and sharp peaks for acidic, neutral and basic compounds are obtained
- Low ability to recognize hydrogen bonds and high ability to recognize structures with unique separation properties and characteristic selectivity



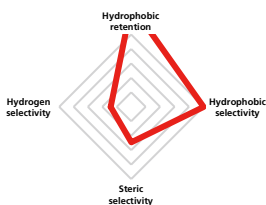
Shim-pack Scepter HD-C18-80

Full-porous organosilica C18 Preparative columns are available



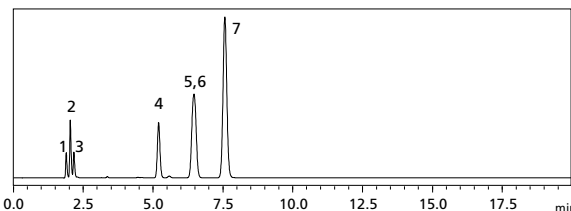
Features :

- Uses organosilica base material with high chemical durability
- High carbon content gives highest hydrophobic retentivity value among Shim-pack columns
- Excellent hydrophobic retention, hydrophobic sex difference recognition and structure recognition, allowing C18 separation of analogs and structural isomers



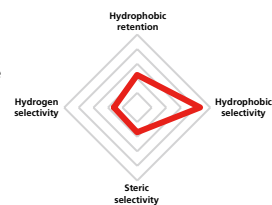
Shim-pack™ GISS C18

Full-porous silica C18 Preparative columns are available



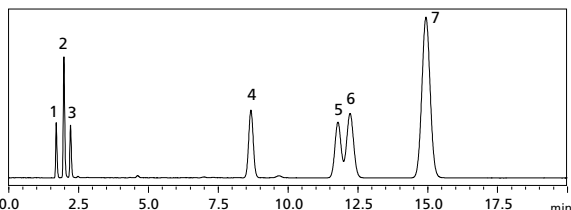
Features :

- Has high pH tolerance (pH 1-10)
- Low hydrophobic retention value; suitable for high-speed analysis
- Recommended for peptide analysis and other analyses with somewhat larger molecular weights



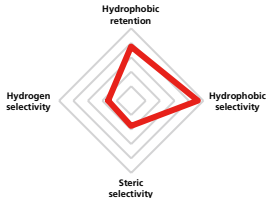
Shim-pack GIST C18-AQ

Full-porous silica C18 Preparative columns are available



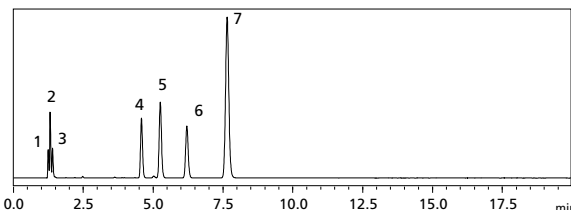
Features :

- Has high pH tolerance (pH 1-10)
- Strongest retention of hydrophilic compounds in the Shim-pack C18 series



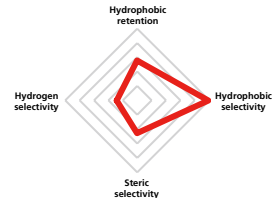
Shim-pack Velox™ C18

Core-shell silica C18



Features :

- A versatile core-shell silica substrate; best for fast analysis
- Has hydrogen bond recognition ability, balanced separation selectivity and standard behavior



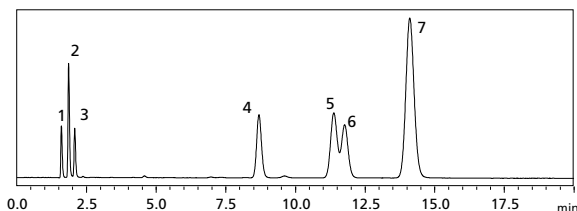
② L1 Kit for HPLC / UHPLC (LC-MS)

Peaks

1. Uracil	5. o-Terphenyl
2. Caffeine	6. Amylbenzene
3. Phenol	7. Triphenylene
4. Butylbenzene	

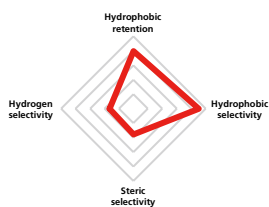
Shim-pack Scepter C18-120

Full-porous organosilica C18 Preparative columns are available



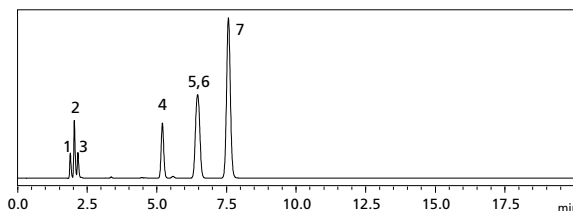
Features :

- Uses organosilica base material with high chemical durability
- Universal C18 column
- High pH tolerance. Three different column bodies can be selected to suit the sample.
- *The P/N in this brochure has a stainless body.
- An inert body (Claris) is the first choice in reversed-phase nucleic acid drug analysis



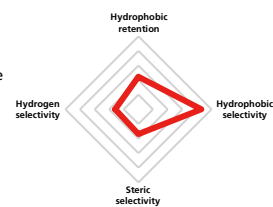
Shim-pack GISS C18

Full-porous silica C18 Preparative columns are available



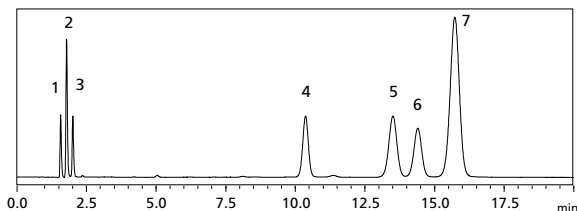
Features :

- Has high pH tolerance (pH 1-10)
- Low hydrophobic retention value; suitable for high-speed analysis
- Recommended for peptide analysis and other analyses with somewhat larger molecular weights



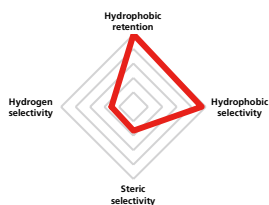
Shim-pack GIST C18

Full-porous silica C18 Preparative columns are available



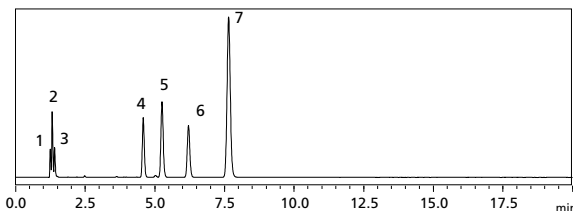
Features :

- Has high pH tolerance (pH 1-10)
- Universal C18 column
- High hydrophobic retention and hydrophobic gender recognition abilities



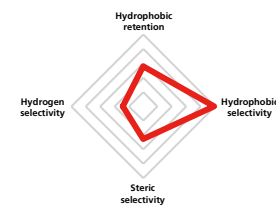
Shim-pack Velox C18

Core-shell silica C18



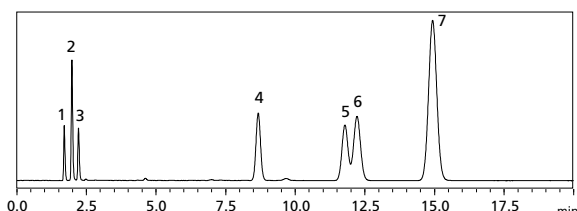
Features :

- A versatile core-shell silica substrate; best for fast analysis
- Has hydrogen bond recognition ability, balanced separation selectivity and standard behavior



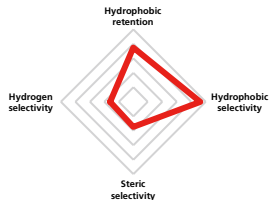
Shim-pack GIST C18-AQ

Full-porous silica C18 Preparative columns are available



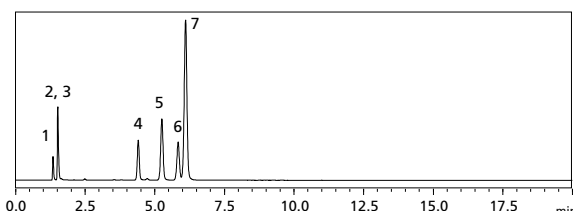
Features :

- Has high pH tolerance (pH 1-10)
- Strongest retention of hydrophilic compounds in the Shim-pack C18 series



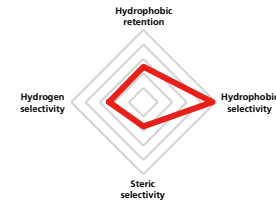
Shim-pack Velox SP-C18

Core-shell silica C18



Features :

- A versatile core-shell silica substrate; best for fast analysis
- Separation selectivity different from Shim-pack Velox C18



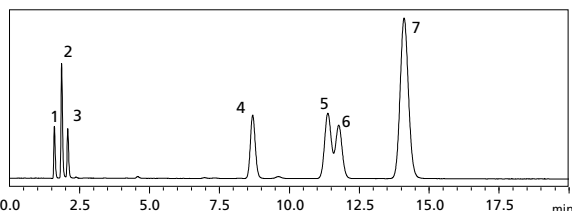
③ Maximum Selectivity RP Kit for HPLC / UHPLC Type A

Peaks

1. Uracil	5. o-Terphenyl
2. Caffeine	6. Amylbenzene
3. Phenol	7. Triphenylene
4. Butylbenzene	

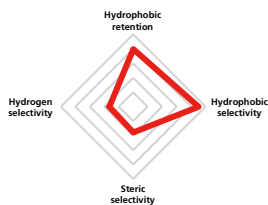
Shim-pack Scepter C18-120

Full-porous organosilica C18 Preparative columns are available



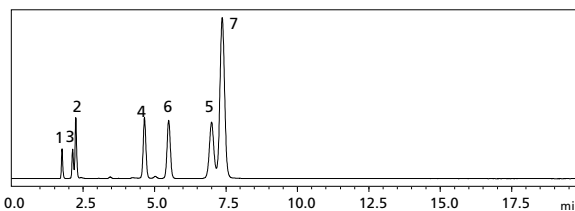
Features :

- Uses organosilica base material with high chemical durability
- Universal C18 column
- High pH tolerance. Three different column bodies can be selected to suit the sample
*The P/N in this brochure has a stainless body
- An inert body (Claris) is the first choice in reversed-phase nucleic acid drug analysis



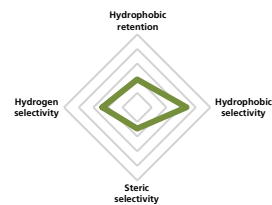
Shim-pack Scepter Phenyl-120

Full-porous organosilica Butyl-phenyl



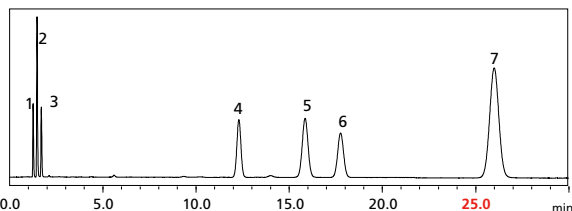
Features :

- High chemical durability (pH range used: 1-10) - Butyl Phenyl type phenyl column
- Phenyl columns from three different column bodies can be used in all aspects
*The P/N in this brochure has a stainless body



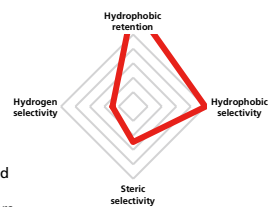
Shim-pack Scepter HD-C18-80

Full-porous organosilica C18 Preparative columns are available



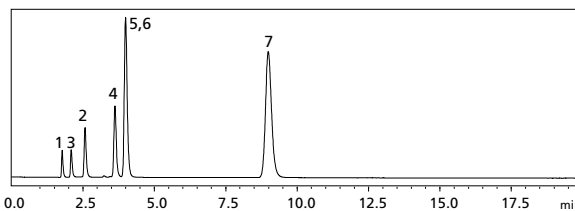
Features :

- Uses organosilica base material with high chemical durability
- High carbon content gives highest hydrophobic retentivity value among Shim-pack columns
- Excellent hydrophobic retention, hydrophobic sex difference recognition and structure recognition, allowing C18 separation of analogs and structural isomers



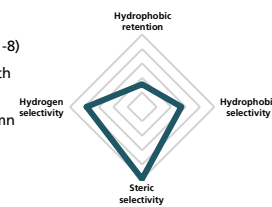
Shim-pack Scepter PFPP-120

Full-porous organosilica PFP



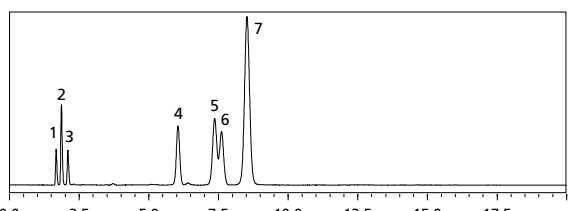
Features :

- High chemical durability (pH range used: 1-8)
- Excellent column for structural isomers with attached PFP groups
- Phenyl columns from three different column bodies can be used in all aspects
*The P/N in this brochure has a stainless body



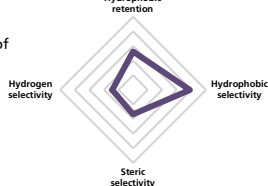
Shim-pack Scepter C8-120

Full-porous organosilica C8 Preparative columns are available



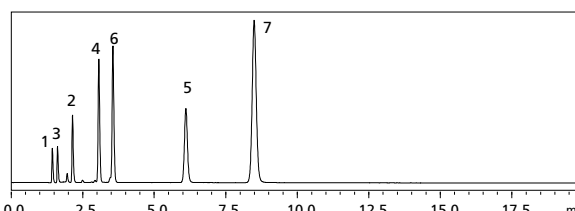
Features :

- Separation selectivity different from that of Shim-pack Scepter C18-120
- High pH tolerance (pH range used: 1-12)



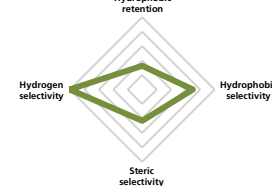
Shim-pack Velox Biphenyl

Core-shell silica Biphenyl



Features :

- Uses core-shell silica substrate
- Biphenyl group attached
- Various interactions work, resulting in excellent stereoselectivity and planar recognition



④ Maximum Selectivity RP Kit for HPLC / UHPLC Type B

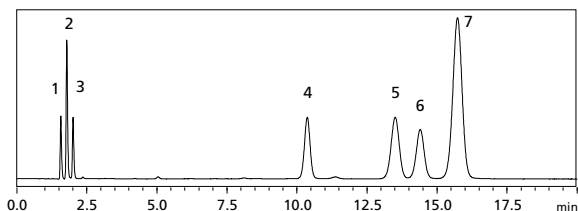
Peaks

1. Uracil	5. o-Terphenyl
2. Caffeine	6. Amylbenzene
3. Phenol	7. Triphenylene
4. Butylbenzene	

Shim-pack GIST C18

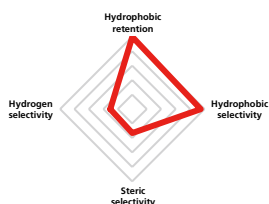
Full-porous silica C18

Preparative columns are available



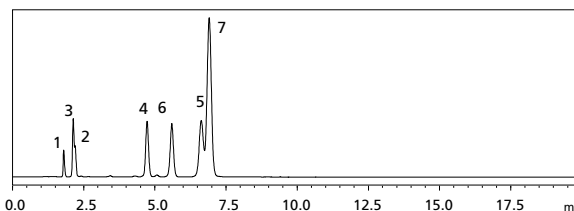
Features :

- Has high pH tolerance (pH 1-10)
- Universal C18 column
- High hydrophobic retention and hydrophobic gender recognition abilities



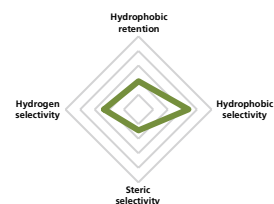
Shim-pack GIST Phenyl-Hexyl

Full-porous silica Hexyl-phenyl



Features :

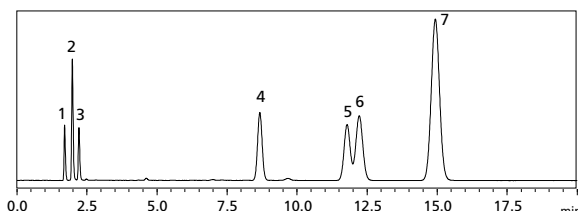
- Adopts highly inert silica base material
- Phenyl-Hexyl bound column



Shim-pack GIST C18-AQ

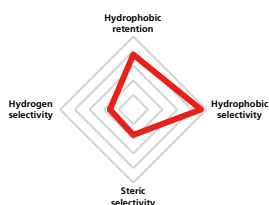
Full-porous silica C18

Preparative columns are available



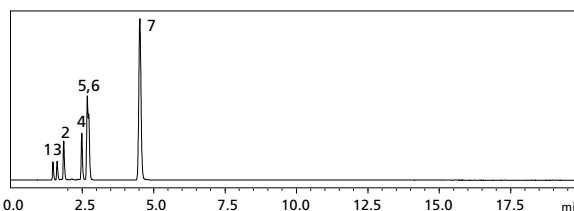
Features :

- Has high pH tolerance (pH 1-10)
- Strongest retention of hydrophilic compounds in the Shim-pack C18 series



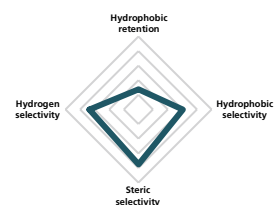
Shim-pack Velox PFPF

Core-shell silica PFP



Features :

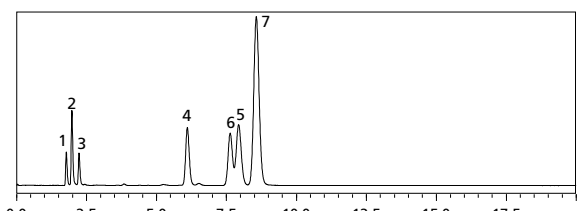
- Uses core-shell silica substrate
- Binds PFP groups
- Various interactions work, resulting in excellent stereoselectivity and planar recognition
- Also good at isomer separation



Shim-pack GIST C8

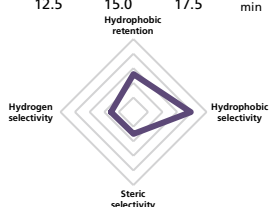
Full-porous silica C8

Preparative columns are available



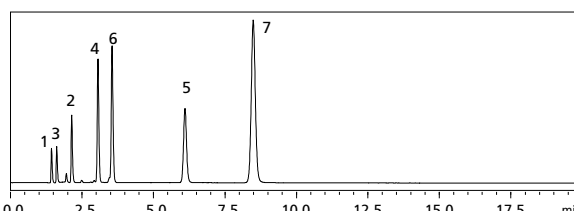
Features :

- Selectivity different from Shim-pack GIST C18
- High pH tolerance (pH range used: 1-10)



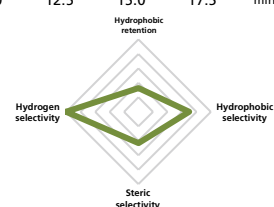
Shim-pack Velox Biphenyl

Core-shell silica Biphenyl



Features :

- Uses core-shell silica substrate
- Biphenyl group attached
- Various interactions work, resulting in excellent stereoselectivity and planar recognition



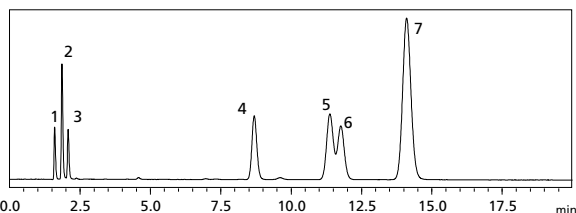
⑤ Maximum Selectivity RP Kit for HPLC / UHPLC (LC-MS)

Peaks

1. Uracil	5. <i>o</i> -Terphenyl
2. Caffeine	6. Amylbenzene
3. Phenol	7. Triphenylene
4. Butylbenzene	

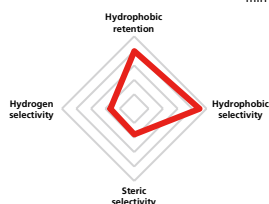
Shim-pack Scepter C18-120

Full-porous organosilica C18 Preparative columns are available



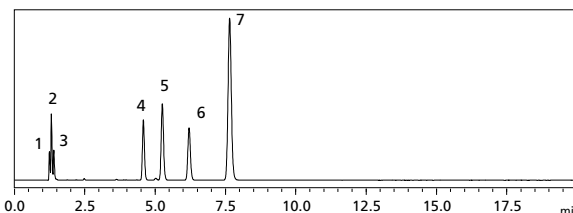
Features :

- Uses organosilica base material with high chemical durability
- Universal C18 column
- High pH tolerance. Three different column bodies can be selected to suit the sample
- *The P/N in this brochure has a stainless body
- An inert body (Claris) is the first choice in reversed-phase nucleic acid drug analysis



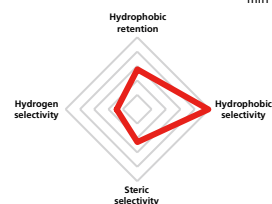
Shim-pack Velox C18

Core-shell silica C18



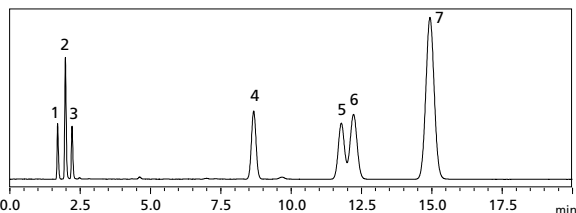
Features :

- A versatile core-shell silica substrate; best for fast analysis
- Has hydrogen bond recognition ability, balanced separation selectivity and standard behavior



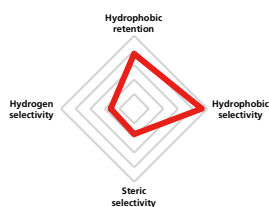
Shim-pack GIST C18-AQ

Full-porous silica C18 Preparative columns are available



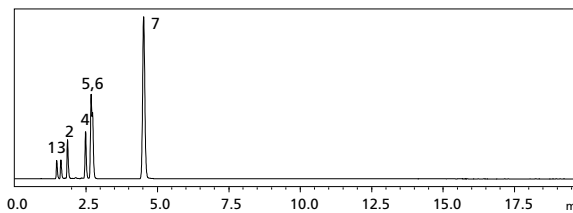
Features :

- Has high pH tolerance (pH 1-10)
- Strongest retention of hydrophilic compounds in the Shim-pack C18 series



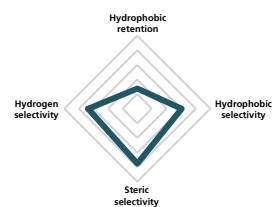
Shim-pack Velox PFPF

Core-shell silica PFP



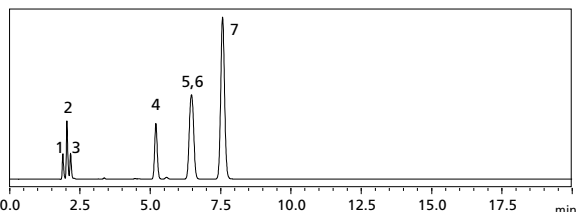
Features :

- Uses core-shell silica substrate
- Binds PFP groups
- Various interactions work, resulting in excellent stereoselectivity and planar recognition
- Also good at isomer separation



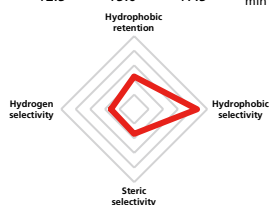
Shim-pack GISS C18

Full-porous silica C18 Preparative columns are available



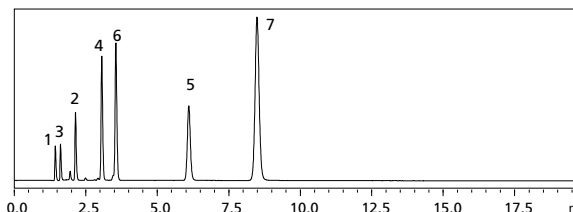
Features :

- Has high pH tolerance (pH 1-10)
- Low hydrophobic retention value; suitable for high-speed analysis
- Recommended for peptide analysis and other analyses with somewhat larger molecular weights



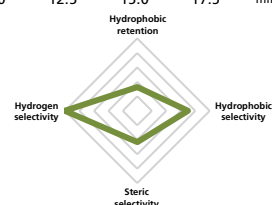
Shim-pack Velox Biphenyl

Core-shell silica Biphenyl



Features :

- Uses core-shell silica substrate
- Biphenyl group attached
- Various interactions work, resulting in excellent stereoselectivity and planar recognition





CoreFocus, Shim-pack, Shim-pack Arata, Shim-pack Scepter, and Shim-pack Velox are trademarks of Shimadzu Corporation or its affiliated companies in Japan and/or other countries.



Shimadzu Corporation
www.shimadzu.com/an/

For Research Use Only. Not for use in diagnostic procedures.

This publication may contain references to products that are not available in your country. Please contact us to check the availability of these products in your country.

Company names, products/service names and logos used in this publication are trademarks and trade names of Shimadzu Corporation, its subsidiaries or its affiliates, whether or not they are used with trademark symbol "TM" or "®".

Third-party trademarks and trade names may be used in this publication to refer to either the entities or their products/services, whether or not they are used with trademark symbol "TM" or "®".

Shimadzu disclaims any proprietary interest in trademarks and trade names other than its own.

The contents of this publication are provided to you "as is" without warranty of any kind, and are subject to change without notice. Shimadzu does not assume any responsibility or liability for any damage, whether direct or indirect, relating to the use of this publication.