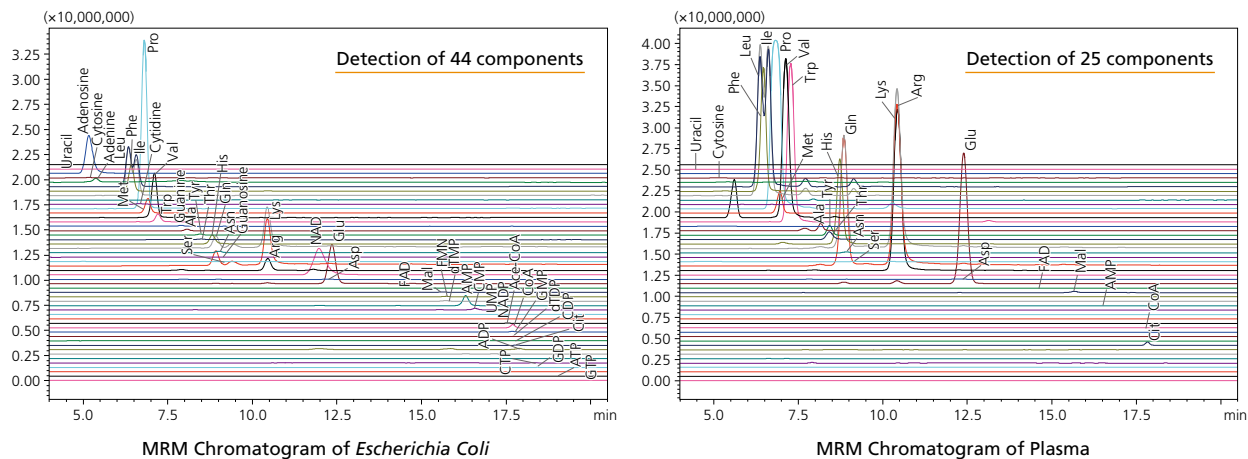




## Applications to Samples of Biological Origin

Shim-pack Mix-HILIC can be applied to the measurement of samples of biological origin.



## Shim-pack Mix-HILIC Column

Part number	Model	Size	Particle Size
227-32751-01	Shim-pack Mix-HILIC	150 mm × 2.1 mm I.D.	5 μm

## Optimal LC System for Metabolome Data Analysis

The HPLC configuration combines the Nexera™ X3, which is equipped with Analytical Intelligence functions, and the LCMS-8060NX, which provides MS detection with both minimization of matrix effects and high sensitivity, thereby increasing operability and durability, and heightening the efficiency of the work flow as a whole.

In addition, using LabSolutions Insight™, which dramatically improves data analysis efficiency, and Peakintelligence™, which significantly reduces the difficulty of integrating the detected peaks, can optimize the output of data analysis tasks.



Liquid Chromatograph Mass Spectrometer LCMS-8060NX

Shim-pack, CoreFocus, Nexera, Peakintelligence and LabSolutions Insight are trademarks of Shimadzu Corporation or its affiliated companies in Japan and/or other countries.



Shimadzu Corporation  
www.shimadzu.com/an/

**For Research Use Only. Not for use in diagnostic procedures.**

This publication may contain references to products that are not available in your country. Please contact us to check the availability of these products in your country.

Company names, products/service names and logos used in this publication are trademarks and trade names of Shimadzu Corporation, its subsidiaries or its affiliates, whether or not they are used with trademark symbol "TM" or "®".

Third-party trademarks and trade names may be used in this publication to refer to either the entities or their products/services, whether or not they are used with trademark symbol "TM" or "®".

Shimadzu disclaims any proprietary interest in trademarks and trade names other than its own.

The contents of this publication are provided to you "as is" without warranty of any kind, and are subject to change without notice. Shimadzu does not assume any responsibility or liability for any damage, whether direct or indirect, relating to the use of this publication.