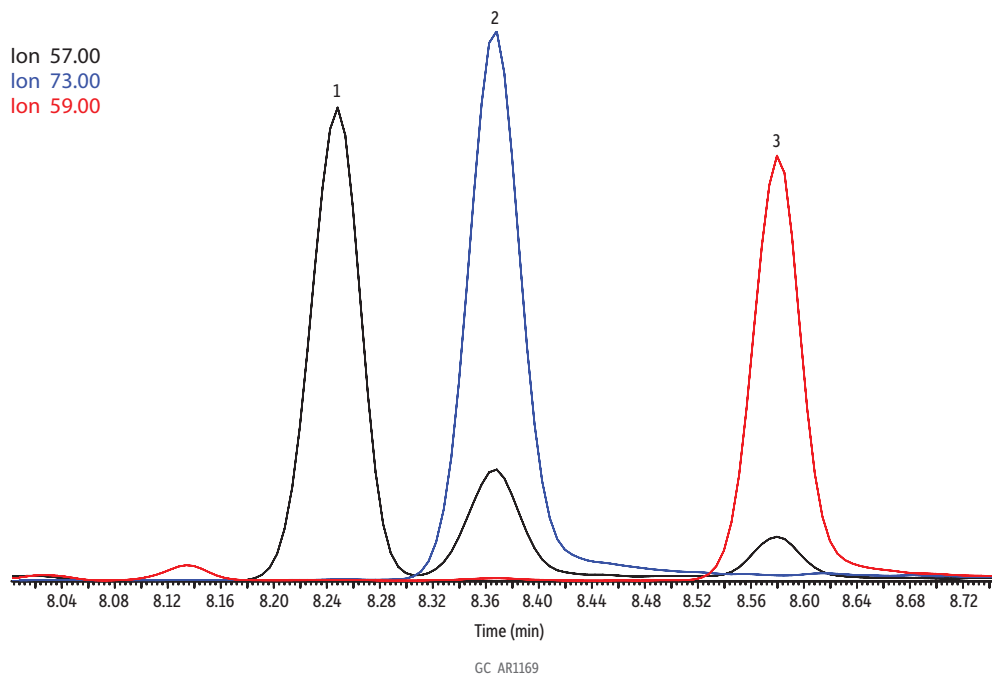


# Hexane, MTBE, and TBA on Rtx-VMS (60 m, 40 °C start)



Peaks	ts (min)
1. Hexane	8.25
2. Methyl <i>tert</i> -butyl ether (MTBE)	8.37
3. Tertiary butanol	8.58

**Column** Rtx-VMS, 60 m, 0.25 mm ID, 1.40  $\mu$ m (cat.# 19916)  
with MXT low-dead-volume connector kit (cat.# 20536)

**Sample** TO-14A internal standard/tuning mix (cat.# 34408)  
75 comp TO15 + NJ mix (cat.# 34396)

**Diluent:** Air @ 50% RH

**Conc.:** 5 ppbv 250 mL injection

**Injection** on-column

**Oven**

**Oven Temp.:** 40 °C (hold 7 min) to 250 °C at 30 °C/min (hold 2 min)

**Carrier Gas** He, constant flow

**Flow Rate:** 2.0 mL/min

**Detector** MS

**Mode:** Scan

**Scan Program:**

Group	Start Time (min)	Scan Range (amu)	Scan Rate (scans/sec)
1	0.00	35.0 - 226.00	3.8

**Transfer Line** Temp.: 250 °C

**Analyzer Type:** Quadrupole

**Source Type:** Extractor

**Extractor Lens:** 6 mm ID

**Source Temp.:** 230 °C

**Quad Temp.:** 150 °C

**Electron Energy:** 70.0 eV

**Tune Type:** BFB

**Ionization Mode:** EI

**Preconcentrator** Markes CIA Advantage

**Instrument** Agilent 7890B GC & 5977A MSD