



# SmartLink: Simplified data evaluation

## Thermo Scientific Chromeleon 7 Chromatography Data System

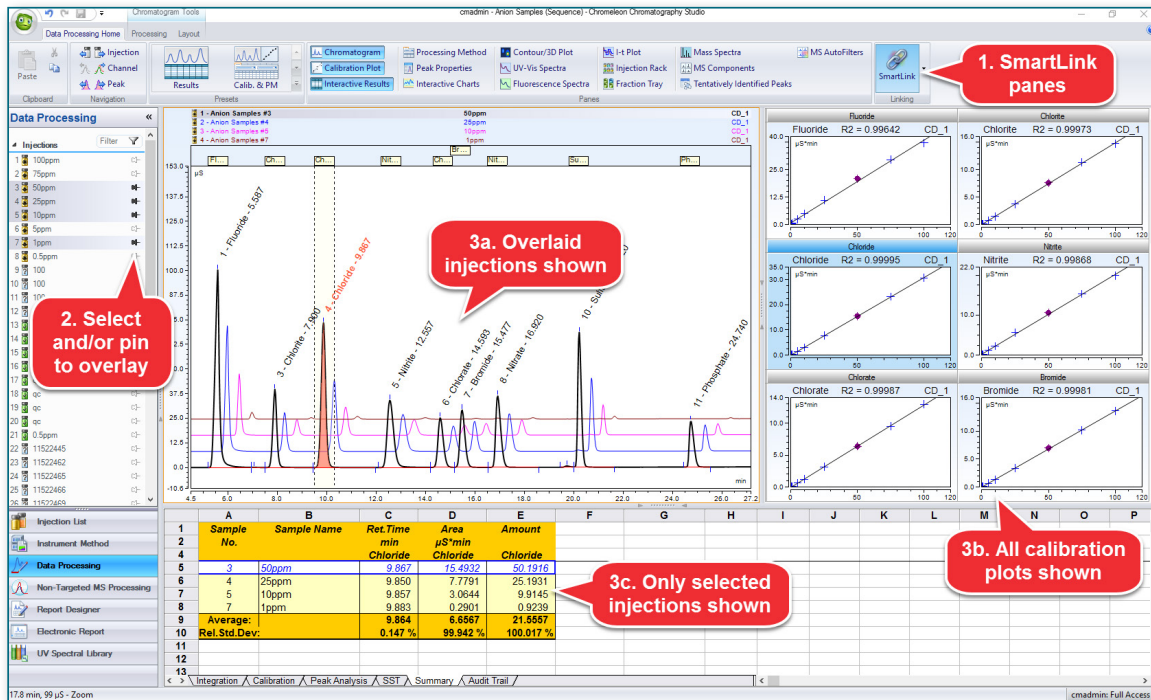
**Often when evaluating data, the analyst is presented with too much, or more commonly, insufficient on-screen data to effectively review and process samples. This results in time consuming opening and closing of data files, metadata and associated reports. By linking the on-screen panes to the chromatogram and/or the selected injections, Thermo Scientific™ Chromeleon™ 7 Chromatography Data System (CDS) gives the analyst all the relevant information for processing data, delivering faster and simplified data analysis.**

One click of the mouse activates the linking and immediately all active panes reflect the currently displayed/selected peaks in the chromatogram and overlaid injections. As the zoom or overlaid injections or selected components are changed, the panes automatically update to the new settings. This linking ensures that the analyst always has all the relevant information displayed.

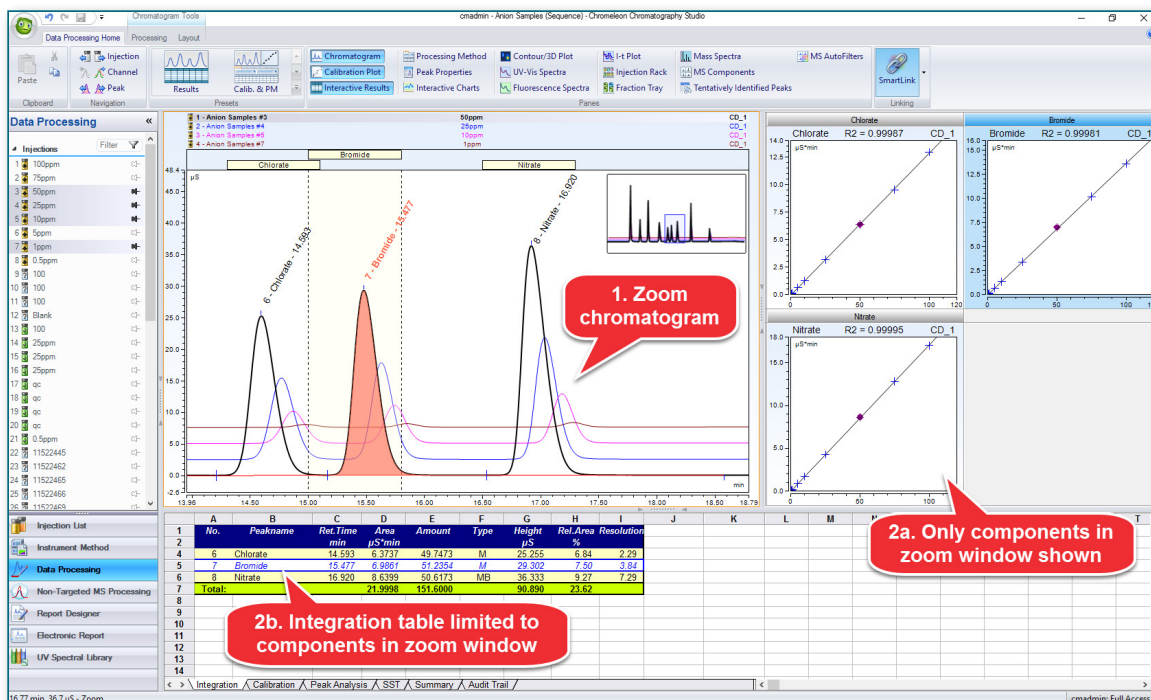




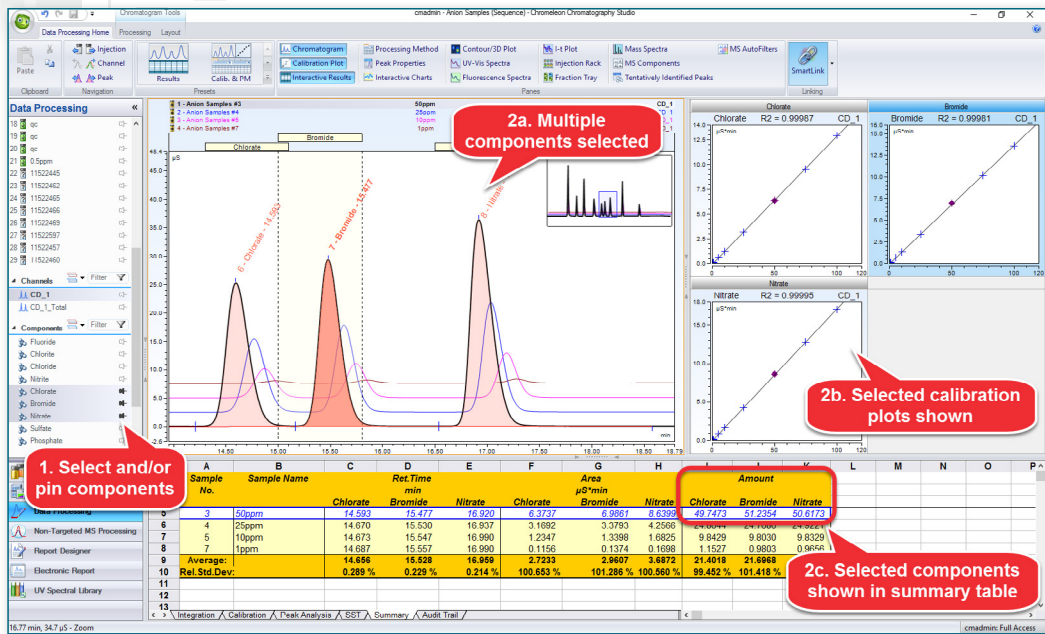
## SmartLink is activated by a single mouse click and all active panes are immediately linked to the chromatogram.



Selecting multiple injections limits the report summary table to only those injections.

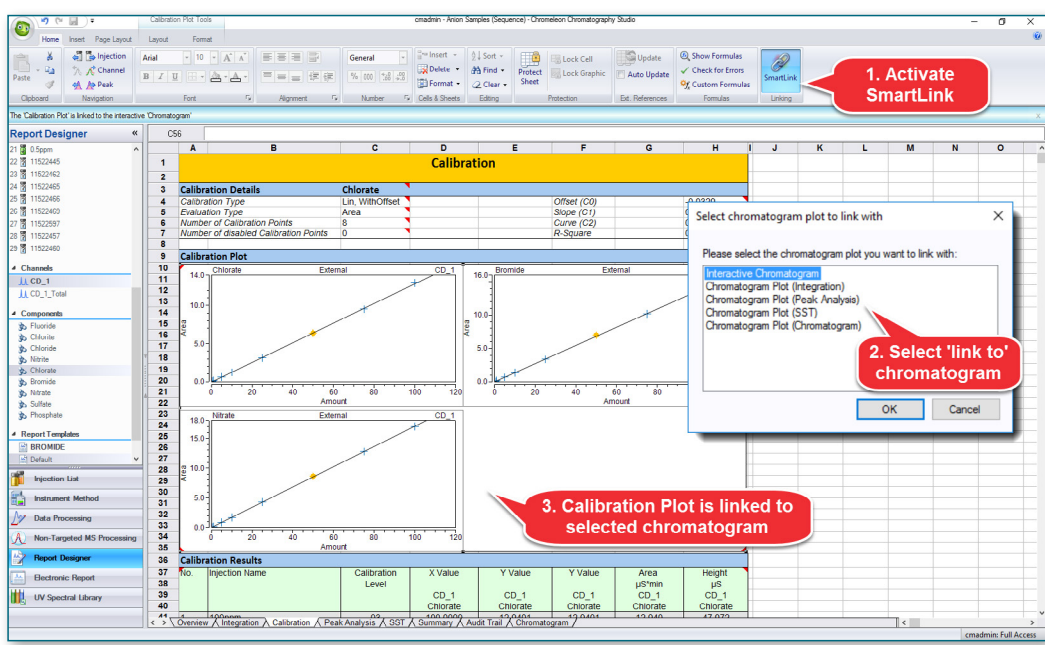


Zooming the chromatogram limits the calibration plots and integration table to only the visible components.



Selecting multiple components shows the calibration plots and limits the integration table to only those components, and automatically updates the summary table to show only those components.

SmartLink is also active in the report designer where different tables and plots can be linked to specific chromatogram plots to create customized, dynamic tables displaying only the relevant information to be reported.



Report elements including plots, tables and charts can be linked. Highlight the element (in this case a calibration plot), activate SmartLink, and select the chromatogram to link to from the dialog box.

Find out more at [thermofisher.com/chromeleon](http://thermofisher.com/chromeleon)

