

Mineral oil in soil

Fast analysis of C₂₀ - C₄₀ mineral oil in soil

Application Note

Environmental

Authors

Agilent Technologies, Inc.

Introduction

GC analysis of mineral oil in soil is accomplished in less than three minutes using the Agilent Select Mineral Oil column allowing determination of C₁₀ to C₄₀.

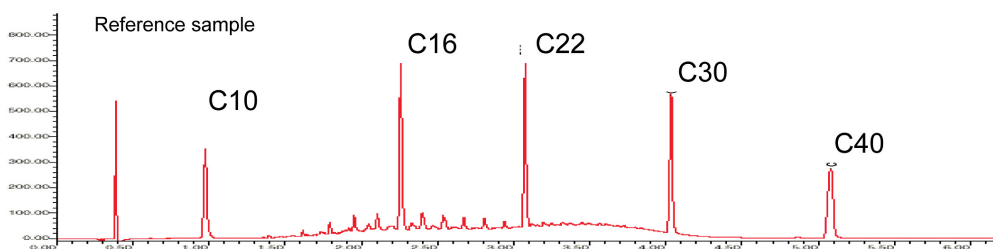
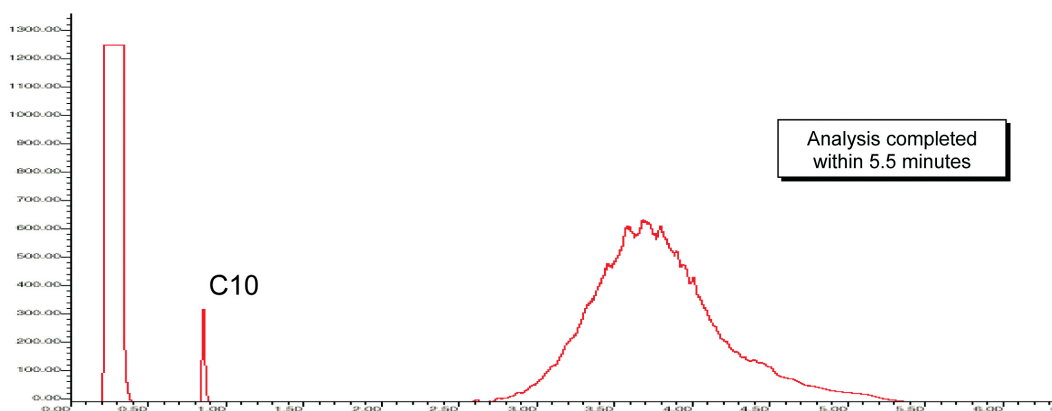


Agilent Technologies

Conditions

Technique : GC
Column : Agilent Select Mineral Oil, 0.32 mm x 15 m fused silica (optimized filmthickness) (Part no. CP7491)
Temperature : 55 °C → 320 °C, ballistic temperature program
Carrier Gas : Helium, 70 kPa
Injector : On-column
Detector : FID
Sample Size : 1.0 µL
Concentration Range : real sample, conc. > 400 mg/L

Courtesy : J. Volkers and J. de Smit, Analytico, Barneveld, The Netherlands



www.agilent.com/chem

This information is subject to change without notice.

© Agilent Technologies, Inc. 2011

Printed in the USA

31 October, 2011

First published prior to 11 May, 2010

A02023



Agilent Technologies