

CoreFocus Report

No.570

LC-MS

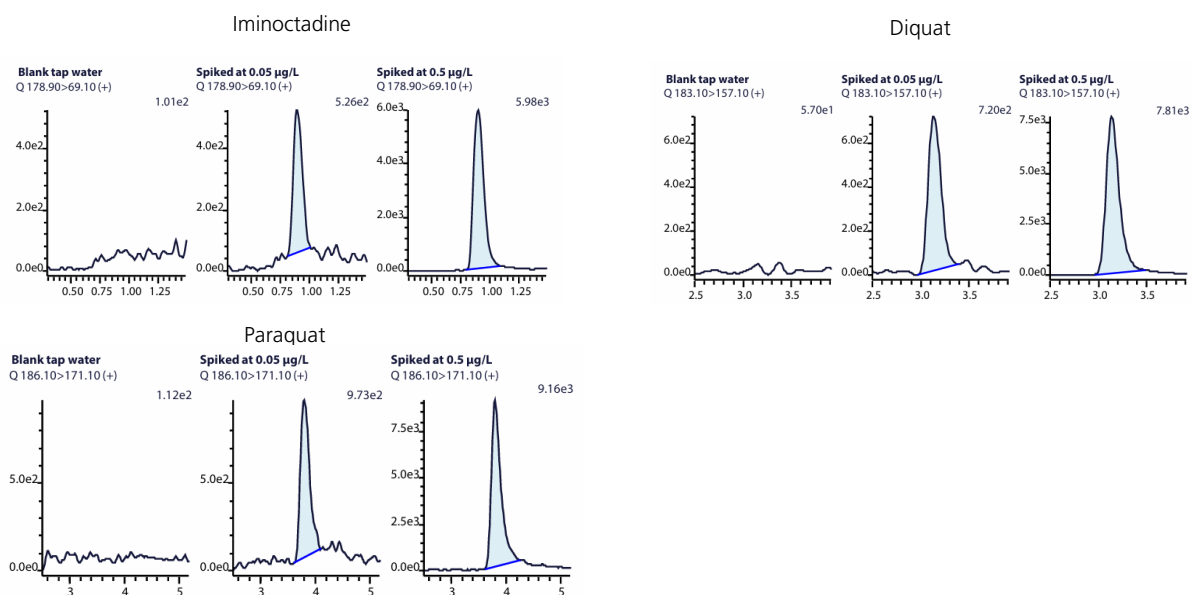
HILIC

Shim-pack™ Series

Shim-pack Velox™ HILIC

Analysis of Iminoctadine, Diquat and Paraquat in Tap Water

Keywords: water quality, herbicide



[HPLC conditions] (Nexera™ X3)

Column : Shim-pack Velox HILIC,
100 mm x 2.1 mm I.D., 2.7 µm*1
Mobile phases : A) 150 mmol/L Ammonium formate buffer
(pH 3.6)
B) Acetonitrile
Isocratic, B conc. 50 %
Flow rate : 0.40 mL/min
Column oven : 30 °C
Injection vol. : 5 µL

1*: P/N : 227-32025-03

[MS conditions] (LCMS-8050)

Ionization : ESI (Positive mode)
Probe voltage : +0.5 kV
Mode : MRM
Nebulizing gas flow : 3.0 L/min
Heating gas flow : 15.0 L/min
Drying gas flow : 5.0 L/min
DL Temp. : 300 °C
Heat Block Temp. : 500 °C
Interface Temp. : 400 °C
MRM transition : Iminoctadine 178.90>69.10
Diquat 183.10>157.10
Paraquat 186.10>171.10

Source : Application News 01-00254 ([JP,ENG](#))

CoreFocus, Shim-pack, Shim-pack Velox and Nexera are trademarks of Shimadzu Corporation or its affiliated companies in Japan and/or other countries.

Shimadzu Corporation

www.shimadzu.com/an/

For Research Use Only. Not for use in diagnostic procedures.

This publication may contain references to products that are not available in your country. Please contact us to check the availability of these products in your country.

The content of this publication shall not be reproduced, altered or sold for any commercial purpose without the written approval of Shimadzu.

Company names, products/service names and logos used in this publication are trademarks and trade names of Shimadzu Corporation, its subsidiaries or its affiliates, whether or not they are used with trademark symbol "TM" or "®".

Third-party trademarks and trade names may be used in this publication to refer to either the entities or their products/services, whether or not they are used with trademark symbol "TM" or "®".

Shimadzu disclaims any proprietary interest in trademarks and trade names other than its own.

The information contained herein is provided to you "as is" without warranty of any kind including without limitation warranties as to its accuracy or completeness. Shimadzu does not assume any responsibility or liability for any damage, whether direct or indirect, relating to the use of this publication. This publication is based upon the information available to Shimadzu on or before the date of publication, and subject to change without notice.