

Application News

High Performance Liquid Chromatograph
Software for Efficient Method Development

Automatic Optimization of Gradient Conditions by AI Algorithm Using Integrated LC System

Shinichi Fujisaki

User Benefits

- ◆ The AI algorithm of LabSolutions™ MD can automatically optimize gradient conditions to greatly reduce labor of LC method development.
- ◆ Automatic optimization of gradient conditions can be applied not only to new method development, but also to existing method to efficiently improve resolution.

■ Introduction

In the typical LC method development, the process begins with "preparation" which includes mobile phase preparation, column installation, and creation of analysis schedules, then the analysis is started. After that, the acquired data is analyzed and "preparation" for the subsequent analysis is carried out, followed by starting the next analysis again. The method development progresses by repeating these processes, but in addition to the significant time required to repeatedly create analysis schedules, expertise in chromatography is necessary to explore optimal conditions based on data analysis. In other words, typical method development requires "human intervention". Therefore, eliminating human involvement and automating such method development processes would be desirable to improve labor efficiency. This article introduces an example of automatic optimization of gradient conditions that meet resolution criteria using LabSolutions MD (Technical Report C190-E309), a dedicated software for supporting method development. A mixture of seven small-molecule compounds was used as a model sample, and the optimization was performed by combining the AI algorithm in LabSolutions MD with the integrated LC system "i-Series" (Fig. 1).

■ Analytical Conditions and Target Compounds

The analytical conditions and target compounds are shown in Table 1. In this article, a mixture of seven small-molecule compounds was used as a model sample. Criteria were set for resolution and the elution time of the last peak, and LabSolutions MD automatically explored the gradient conditions to meet these criteria.

Table 1 Analytical Conditions and Target Compounds

System : LC-2080C 3D	
Sample : (1) Antipyrine, (2) Benzoic acid, (3) Salicylic acid, (4) Hydrocortisone, (5) Furosemide, (6) Naproxen, (7) Probenecid	
Mobile phase	
Pump A :	0.1% formic acid in water
Pump B :	Acetonitrile
Column : Shim-pack Scepter™ C18-120 ^{†1} (100 mm × 3.0 mm I.D., 1.9 μm)	
Analytical conditions	
B Conc.	: 20%(0 min)→X ² % (3 min) →95%(3.01~4 min) →20%(4.01~8 min)
Column Temp.	: 40 °C
Flow rate	: 0.7 mL/min
Injection Vol.	: 5 μL
Detection	: 254 nm (STD cell)
Criteria of automatic optimization of gradient conditions	
Minimal resolution	: 3
Time of last eluting peak	: < 10 min

*1 : 227-31013-03 (Shimadzu GLC product number)

*2 : X = 90, 91, 92, 93, 94 (5 patterns)



Fig. 1 Integrated LC System "i-Series" (LC-2080C 3D)

■ Automatic Optimization of Gradient Conditions

Fig. 2 shows the workflow of automatic optimization of gradient conditions using LabSolutions MD. This software has a unique AI algorithm to automatically explore gradient conditions that satisfy resolution criteria by alternately repeating "improvement of gradient conditions by AI (condition search)" and "analysis under improved conditions (correction analysis)". For the criteria, "resolution" and "elution time of the last peak" can be set. In this article, automatic optimization of gradient conditions was applied to a mixture of seven small-molecule compounds to meet the criteria of resolution (> 3.0) and maximum elution time of 10 minutes for the last peak (Fig. 3), considering the reduction of analysis time.

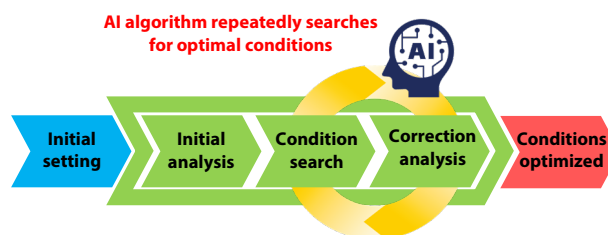


Fig. 2 Workflow for Automatic Optimization of Gradient Conditions by LabSolutions MD

Minimum Resolution:

☒ Elution Time of the Last Peak:
 min

Fig. 3 Criteria Setting for Automatic Optimization

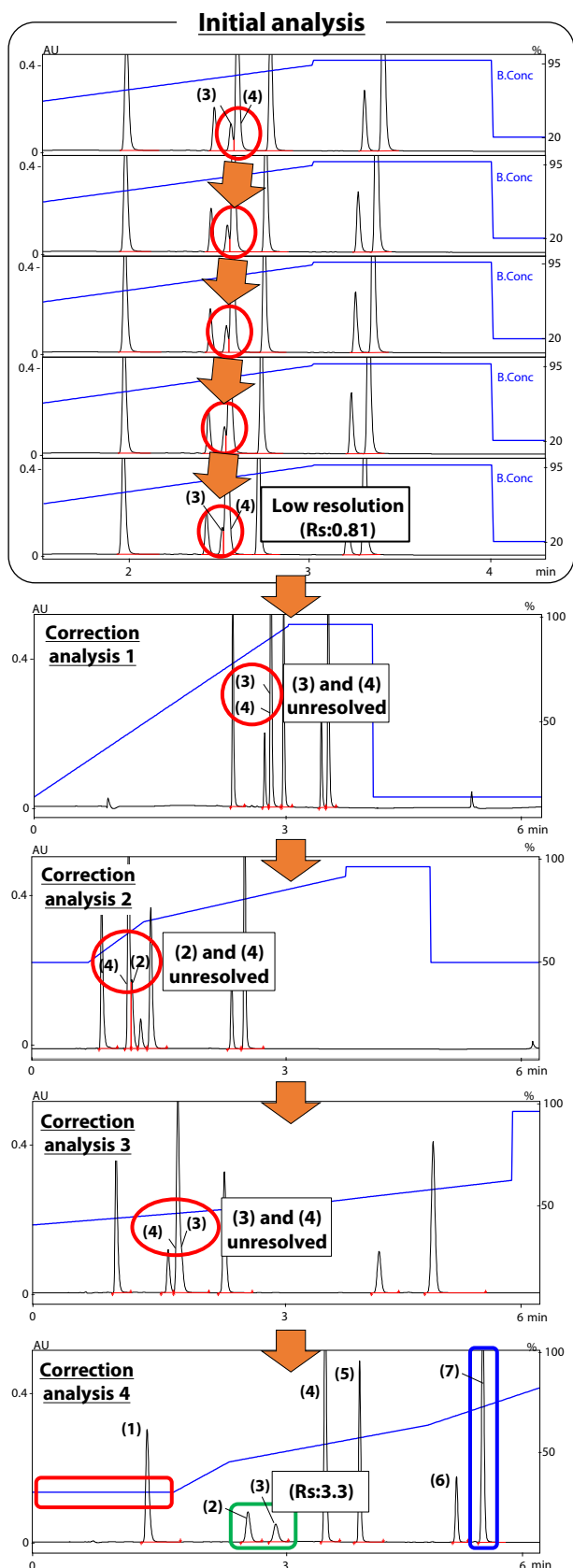


Fig. 4 Result of Automatic Optimization of Gradient Conditions

* blue line shows gradient conditions

* Peak numbers correspond to those listed in Table 1

The result of automatic optimization of gradient conditions is shown in Fig. 4. After the initial analyses were performed with five different gradient patterns (B Conc. in Table 1), the separation of seven small-molecule compounds was automatically optimized through four correction analyses. The result of the initial analyses showed that peaks (3) and (4) were not sufficiently resolved (red circles in the initial analyses in Fig. 4). Through repeated correction analyses by the AI algorithm, the gradient conditions that met the criteria were automatically explored (correction analysis 4). In correction analysis 4, the resolution criteria (> 3.0) was achieved (green box) by introducing an isocratic elution (red box). In addition, the gradient slope was automatically adjusted, and the retention time of the last peak (blue box) met the criteria of being under 10 minutes. This demonstrates that the AI algorithm enables users, regardless of their level of chromatography experience, to easily explore gradient conditions that satisfy the defined criteria.

Conclusion

Automatic optimization of gradient conditions using the AI algorithm in LabSolutions MD was applied to a mixture of seven small-molecule compounds in combination with i-Series. As a result, gradient conditions that met the criteria (minimum resolution > 3.0 and elution time of the last peak < 10 minutes) were successfully explored. In method development, optimizing gradient conditions typically requires human intervention at various steps, such as creating analysis schedules and interpreting data. However, the use of an AI algorithm significantly reduces manual effort and enables automation of the entire workflow.

LabSolutions and Shim-pack Scepter are trademarks of Shimadzu Corporation or its affiliated companies in Japan and/or other countries.



SHIMADZU

Shimadzu Corporation

www.shimadzu.com/an/

For Research Use Only. Not for use in diagnostic procedures.

This publication may contain references to products that are not available in your country. Please contact us to check the availability of these products in your country.

The content of this publication shall not be reproduced, altered or sold for any commercial purpose without the written approval of Shimadzu. See <http://www.shimadzu.com/about/trademarks/index.html> for details.

Third party trademarks and trade names may be used in this publication to refer to either the entities or their products/services, whether or not they are used with trademark symbol "TM" or "®".

Shimadzu disclaims any proprietary interest in trademarks and trade names other than its own.

The information contained herein is provided to you "as is" without warranty of any kind including without limitation warranties as to its accuracy or completeness. Shimadzu does not assume any responsibility or liability for any damage, whether direct or indirect, relating to the use of this publication. This publication is based upon the information available to Shimadzu on or before the date of publication, and subject to change without notice.

01-00933-EN

First Edition: Sep. 2025

Related Products

Some products may be updated to newer models.



> i-Series

High Performance Liquid Chromatograph



> Method

Development System

Automatic Optimization of Gradient Conditions with...

Related Solutions

> Pharmaceutical and Biopharmaceutical

> Small Molecule Pharmaceutical

> Price Inquiry

> Product Inquiry

> Technical Service / Support Inquiry

> Other Inquiry