

### Errata Notice

This document contains references to PSS or Polymer Standards Service. Please note that PSS is now Agilent. This document will be republished as an Agilent document in the future.



A part of Agilent

## # 10305 - Column Application Note Characterization of Poly(isoprene-3.4)

### Experimental Setup

Mobile Phase:	Tetrahydrofuran
Stationary Phase:	PSS SDV
Flow rate [mL/min]:	1,00
Temperature [°C]:	25
Detection:	GPC1200 Refractive index
Calibration:	Kit Poly(isoprene-1.4)
Data processing:	PSS WinGPC

### Recommendations for Sample Concentration

narrow PDI	
M 100 Da - 10 000 Da:	2 g/L
M 10 000 Da - 1 000 000 Da:	1-2 g/L
M > 1 000 000 Da:	0.5 g/L or less
broad PDI (>1.5)	
all molar masses:	3.0 - 5.0 g/L
Injection volume [ $\mu$ L]:	20

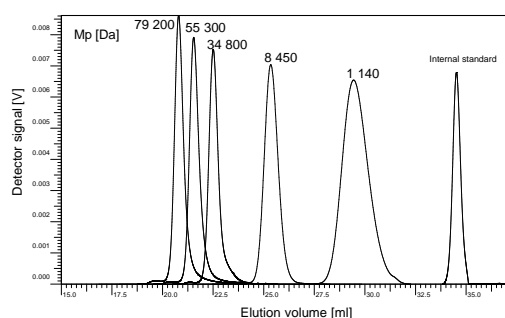


### Suitable Columns

low molecular weights:	P/N 201-0001 (set of 3) OR sda083003lis (1 linear)
medium molecular weights:	P/N 201-0002 (set of 2) OR sda083005lim (1 linear)
high molecular weights:	P/N 201-0003 (set of 3) OR sda083005lxl (1 linear)
ultrahigh molecular weights:	P/N 202-0001 (set of 3)

### Overlay of different molar masses. separation on PSS SDV

separation on PSS SDV



PSS Polymer Standards  
Service GmbH  
In der Dalheimer Wiese 5  
55120 Mainz | Germany

Phone +49 6131 96239-0  
Fax +49 6131 96239-11  
E-Mail [info@pss-polymer.com](mailto:info@pss-polymer.com)  
Web [www.pss-polymer.com](http://www.pss-polymer.com)

Polymer Standards  
Service-USA, Inc.  
160 Old Farm Rd, Suite A  
Amherst | MA 01002 | USA

Phone +1 413 835-0265  
Fax +1 413 835-0354  
E-Mail [pssusa@pss-polymer.com](mailto:pssusa@pss-polymer.com)  
Web [www.pss-polymer.com](http://www.pss-polymer.com)

DE16252083

5994-6317EN  
July 1, 2023