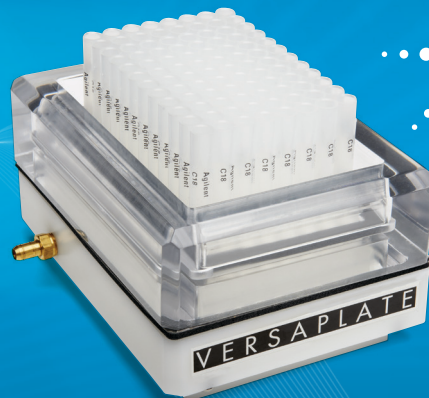


IMPROVE YOUR AUTOMATED SAMPLE PREP

The Measure of Confidence



Agilent VersaPlate 96-well Solid Phase Extraction and Solid Supported Liquid Extraction (SPE/SLE)

Streamline SPE with VersaPlate to process more samples in less time with less waste

It's no secret that proper sample preparation is essential to successful analysis. But sometimes even proper sample prep isn't enough to solve problems like low throughput, product waste, and cross-contamination that can occur in your lab. That's where VersaPlate can help. In its 96-well format, tubes are removable making this system easier to implement, simpler to use, and far more flexible than conventional fixed products.

Ease-of-use is just one aspect of what VersaPlate can offer your lab. Its flexible format allows you to create your own customized SPE plates. This means that whether you need to speed the processing of hundreds of samples, validate just a few samples, or develop a new method, you can customize the configuration to meet your needs. This flexibility allows you to get the job done quickly and at a lower overall cost without wasting sample preparation cartridges while still using a 96-well format.

VersaPlate is your customized sample prep solution to:

- **Increase throughput** – choose the level of automation that best suits your needs while you use the 96-well plate format or create your own customized plates.
- **Speed method development** – develop an SPE method faster using liquid handling automation or multi-channel pipettes, or use individual tubes to quickly work out method conditions and transfer to 96-well processing.
- **Eliminate waste** – use only the number of tubes you need for each run to save on sample preparation costs while still enjoying all the benefits of automation.
- **Avoid cross contamination** - increased well depth reduces the risk of overflow and flangeless, beveled rims provide a tight fit.

IDENTIFY WITH EASE. CHOOSE WITH CONFIDENCE. STEP BY STEP.

Saving time and effort identifying the right products for your application is just a click away with Agilent online selection tools! Easily and confidently identify the correct columns, sample preparation products, and supplies for all your chromatographic needs. In just a few clicks, be assured of your selections as you follow a decision-free approach to pinpoint your best supplies options by specific parameters.

Agilent JAW GC Column Selector Find your next GC column with ease Agilent also offers the broadest portfolio of the most innovative GC columns. Choose among three easy ways to locate the part number, regulatory method number, or other GC column supplier part numbers. GET STARTED	Agilent CrossLab Selection Tool Find the right Agilent CrossLab supplies for your lab! CrossLab includes diverse supplies for the other GC and HPLC instrument brands to save the headache. Pentaflex™, Waters, ThermoFisher, Shimadzu, and more. GET STARTED	Agilent Vial Selector Your guide through over 400 selections Make the perfect pick among more than 400 vial, cap, and adapter selections. Identify your best option by answering seven simple questions. GET STARTED
LC Columns and Sample Prep Navigator Simplify and speed selection Quickly pinpoint the right LC column and sample preparation options for achieving the greatest accuracy in your chromatographic analyses using multiple search methods. GET STARTED	Capillary Syringe Filter Selection Tool Get the right answer in just three questions Cover every major sample with Agilent Capillary Syringe Filters. Answer three simple questions about sample matrix, sample volume, and column particle size to identify your best option and alternatives. GET STARTED	Particulate Filter Test Particulate information at your fingertips This QC supported tool lets you visually confirm the correct gas chromatographic filter and part number for your unique instrument configuration. GET STARTED

After selecting your product, you can order at the online store or contact your Agilent Representative or Agilent Authorized Distributor. Or, if you have any questions, visit our technical support page to get the most value from your Agilent products.

After Sample Prep, choose the right GC and LC columns and supplies for your analyses

Now it's easy to find the right GC or LC columns and supplies with Agilent selection tools.

Find it with ease. Find it with confidence.

Go to agilent.com/chem/finditnow



Agilent Technologies

Solve your sample prep problems with a customized VersaPlate solution

Choose yours here:

VersaPlate Customized Configurations

Bond Elut Silica SPE VersaPlate Configurations		
Description	Part Number Assembled VersaPlate	Part Number 96 Tubes Only
C2, 50 mg		75511050
C2, 100 mg	7541101C	7551101C
C8, 25 mg	75403025	75503025
C8, 50 mg	75403050	75503050
C8, 100 mg	7540301C	7550301C
C8, 200 mg	7540302C	
C18, 25 mg	75401025	75501025
C18, 50 mg	75401050	75501050
C18, 100 mg	7540101C	7550101C
C18, 200 mg	7540102C	7550102C
C18, 50 mg, High Flow		75502050
C18, 100 mg, High Flow	7540201C	7550201C
C18 EWP, 100 mg	7542601C	
C18 EWP, 300 mg	7540103C	7550103C
C180H, 100 mg	7541601C	7551601C
C180H, 300 mg	7542703C	
CBA, 50 mg	75406050	
CBA, 100 mg	7540601C	7550601C
Certify*, 25 mg	75409025	75509025
Certify*, 50 mg	75409050	75509050
Certify*, 100 mg	7540901C	7550901C
Certify II*, 100 mg	7541801C	7551801C
CN-E, 50 mg		75504050
CN-E, 100 mg	7540401C	7550401C
CN-U, 100 mg	7541401C	7551401C
DEA, 50 mg		75517050
DEA, 100 mg	7541701C	7551701C
DEA, 200 mg	7541702C	
Diol, 100 mg		7552501C
NH ₂ , 50 mg	75405050	75505050
NH ₂ , 100 mg	7540501C	7550501C
NH ₂ , 250 mg	7540502C	
PBA, 100 mg	7541201C	7551201C
PH, 100 mg	7541501C	7551501C
PH, 200 mg	7541502C	
PRS, 100 mg	7542401C	7552401C
PSA, 100 mg	7542101C	7552101C
SAX, 25 mg		75508025
SAX, 50 mg	75408050	75508050
SAX, 100 mg	7540801C	7550801C
SAX, 200 mg	7540802C	
SCX, 25 mg		75507025
SCX, 50 mg		75507050
SCX, 100 mg	7540701C	7550701C
SCX, 200 mg		7550702C
SCX, 400 mg		7550704C
SCX, 500 mg	7542305C	
SI, 100 mg	7541301C	7551301C
SI, 250 mg	7542502C	

*For Forensic Use.

Bond Elut Polymeric SPE VersaPlate Configurations		
Description	Part Number Assembled VersaPlate	Part Number 96 Tubes Only
FOCUS, 10 mg		A5206010
LMS, 50 mg		75510050
LMS, 200 mg	7541002C	7551002C
NEXUS, 10 mg		75520010
NEXUS, 30 mg		75520030
NEXUS, 60 mg		75520060
NEXUS, 300 mg		7552003C
Plexa, 30 mg	75490030	75590030
Plexa, 60 mg	75490060	75590060 (100/pk)
Plexa PAX, 30 mg	5982-0601	5982-0602
Plexa PCX, 30 mg	75580030	
Plexa PCX, 60 mg	75480060	75580060
PPL, 100 mg	7541901C	7551901C

Bond Elut Specialty SPE VersaPlate Configurations		
Description	Part Number Assembled VersaPlate	Part Number 96 Tubes Only
AL-B, 100 mg		7552301C
AL-N, 100 mg		7552201C

OMIX Micro-Volume SPE VersaPlate Configurations		
Description	Part Number Assembled VersaPlate	Part Number 96 Tubes Only
C4	A57109	A57109A
C18	A57103	A57103A
MP1	A57111	A57111A

Chem Elut SLE VersaPlate Configurations		
Description	Part Number Assembled VersaPlate	Part Number 96 Tubes Only
Chem Elut, 260 mg	75430260	75530260

VersaPlate Accessories	
Description	Part Number
Base Plate, empty	75400000
Captiva 96-deep well collection plates, 1 mL	A696001000
Disposable reservoir trays for 96-well manifold	5185-5782
Round-well collection plates, 1 mL	5132101
Square-well collection plates, 350 µL	5133007
Square-well collection plates, 1 mL	5133008
Square-well collection plates, 2 mL	5133009
VersaPlate manifold, acetal, white, bottom	12236103
VersaPlate manifold, bottom replacement gasket	12236105
VersaPlate sealing strips	12236108
VersaPlate tube removal tool	12236107
VersaPlate vacuum manifold	12236101

Put VersaPlate to work in your lab

Learn more at agilent.com/chem/versaplate

Or find your local Agilent Representative or

Agilent Authorized Distributor at agilent.com/chem/contactus

For Forensic Use.

©Agilent Technologies, Inc., 2014, 2017
Printed in the USA, September 12, 2017
5991-3846EN



Agilent Technologies