

# Configuring the Dionex Integrion System for Fast Anion Determinations Using Prepared Eluents

Terri Christison, David Moore, Linda Lopez, Jeff Rohrer  
Thermo Fisher Scientific, Sunnyvale, CA

## Key Words

Standard Bore, Microbore, Drinking Water, Integrion, IonPac AS22 column, IonPac AS22-Fast-4 $\mu$ m column

## Goal

Provide instructions for installing a fast anion application on the Thermo Scientific™ Dionex™ Integrion™ HPIC™ system.

## Introduction

The latest advancement in integrated ion chromatography (IC) instrumentation, the Thermo Scientific Dionex Integrion HPIC system, can operate continuously up to 5000 psi for both 4 mm and 2 mm i.d. column formats with eluent generation and 6000 psi with manual eluent preparation. These higher pressures allow the analyst to take full advantage of the high efficiency and fast separations offered by smaller particle size separation columns.

The Dionex Integrion system features the following:

- Compact fully integrated system design
- Separate compartments for pump, column heater with injection valve, and detector with suppressor to provide faster column oven equilibration
- Thermo Scientific™ Dionex™ IC Viper™ fittings that replace standard fitting connections in specified positions and minimize void volume problems to improve chromatography and ensure accurate reporting
- Components that are tracked by consumables device tracking technologies for GMP compliance tracking and to assure installation of compatible devices
- Independent tablet control for convenient continuous monitoring, independent manual control, and access to the instrument manual and troubleshooting guides
- New Thermo Scientific™ Dionex™ Chromeleon™ 7 software features that provide easy instrument configuration, monitoring of consumable devices, and integrated video instructions for conditioning columns, suppressors, and other electrolytic devices



In this technical note, we provide installation recommendations to set up a Dionex Integrion system configured for analytical flow rates (0.10–2.0 mL/min) with manually prepared eluents. Results that highlight some of the instrument, column, and suppressor features will be shown.

## Equipment

- Thermo Scientific Dionex Integrion system including the following:
  - Optional CD Conductivity Detector
  - Optional Column Oven Temperature Control
  - Optional Tablet Control
  - Optional Consumables Device Tracking Capability
- Thermo Scientific™ Dionex™ AS-DV Autosampler (with 5 mL vial adapter (P/N 068907) or with 0.5 mL vial adapters (P/N 068908))

## Software

Chromeleon Chromatography Data System (CDS),  
CM 7.2 SR4

Table 1 lists the consumable products needed for the Dionex Integrion system configured for suppressed conductivity detection.

Table 1. Consumables list for the Dionex Integrion System.

Product Name	High-Pressure Device	Part Number
<b>Dionex IC Viper Fitting Tubing Assembly Kits</b>	Thermo Scientific Dionex Viper Fitting Kit for Dionex Integrion System with Conductivity Detector. Includes one each of P/Ns: 088815, 088816, 088818, 088820	088796
<b>Dionex IC Viper Fitting Tubing Assemblies</b>	Guard column to separator column: 0.007 × 4 in (102 mm)	088815
	Injection valve, Port C (Port 2) to guard column: 0.007 × 5.5 in (140 mm)	088816
	Separator column out to Suppressor Eluent In: 0.007 × 7.0 in (178 mm)	088818
	Suppressor Eluent Out to CD In: 0.007 × 9.0 in (229 mm)	088820
<b>Dionex AS-DV Autosampler Vials: 5 mL</b>	5 mL PolyVials with plain caps: box of 250	038008
	5 mL PolyVials with filter caps: box of 250	038141
	Vial holders for 5 mL vials	068947
<b>Dionex AS-DV Autosampler Vials: 0.5 mL</b>	0.5 mL PolyVials with plain caps: box of 250	038010
	0.5 mL PolyVials with filter caps: box of 250	038142
	Vial holders for 0.5 mL vials	068948
<b>Thermo Scientific™ Dionex™ AERS™ 500 Carbonate Suppressor, 4 mm</b>	For applications shown in Figures 9A, 9B, and 10: Suppressor for 4 mm and 5 mm columns, using carbonate eluents and recycle mode	085029
<b>Thermo Scientific™ Dionex™ IonPac™ AG22-Fast-4µm column, 4 mm</b>	For applications shown in Figures 9B and 10: Fast anion guard column, 4 × 30 mm	088487
<b>Dionex IonPac AS22-Fast-4µm column, 4 mm</b>	For applications shown in Figures 9B and 10: Fast anion separation column, 4 × 150 mm	088486
<b>Dionex AERS 500 Carbonate Suppressor, 2 mm</b>	For application shown in Figure 11: Suppressor for 2 mm and 3 mm columns, using carbonate eluents and recycle mode	085028
<b>Dionex IonPac AG22-Fast-4µm column, 2 mm</b>	For application shown in Figure 11: Fast anion guard column, 2 × 30 mm	088489
<b>Dionex IonPac AS22-Fast-4µm column, 2 mm</b>	For application shown in Figure 11: Fast anion separation column, 2 × 150 mm	088488
<b>Thermo Scientific™ Nalgene™ Syringe Filter</b>	Syringe filters, 25 mm, PES membrane, 0.2 µm. This type is compatible with IC analysis.	Thermo Scientific 7252520 / Fisher Scientific 09-740-113

## Chromatographic Conditions

Columns	Thermo Scientific™ Dionex™ IonPac™ AG22 guard and Dionex IonPac AS22 separation columns (the column format is shown in the chromatograms)
Eluent	4.5 mM sodium carbonate, 1.4 mM sodium bicarbonate
Flow Rate	See chromatograms
Column Temperature	30 °C
Injection Volume	10 or 2.5 µL, see chromatograms
Detection	Suppressed conductivity, Dionex AERS 500 Carbonate Suppressor, 4 mm for 4 mm i.d. columns or 2 mm for 2 mm i.d. columns, recycle mode
Run Time	See chromatograms
Background Conductance	~ 20 µS
Noise	< 1 nS
System Backpressure	Described in the Results section

## Reagents and Standards

- 18 MΩ-cm resistivity degassed deionized (DI) water
- Thermo Scientific™ Dionex™ Combined Seven Anion Standard II, NIST traceable (P/N 057590)
- Thermo Scientific™ Dionex™ AS22 Carbonate/Bicarbonate Concentrate (P/N 063965)

## Eluent Preparation

Dilute the Dionex AS22 Concentrate 1:100 with DI water. Alternatively, dissolve  $476 \pm 1$  mg anhydrous sodium carbonate ( $\text{Na}_2\text{CO}_3$ ) and  $84.0 \pm 1$  mg of sodium bicarbonate ( $\text{NaHCO}_3$ ) in a 1 L volumetric flask containing approximately 500 mL DI water. Dilute to 1 L mark with DI water, cap, and mix thoroughly by inverting the flask several times.

## Instrument Set Up and Installation

The Dionex Integriion system is configured with a CD Conductivity Detector with the intention to use manually prepared eluents, optional column oven temperature control, and is optional consumables device tracking enabled. This system can also be controlled manually by the programmed optional Integriion tablet. This system can operate at pressures up to 6000 psi without eluent generation.

To set up this application, connect the Dionex AS-DV autosampler and the Dionex Integriion HPIC system according to Figure 1. Note that the injection valve is plumbed through different ports than previous Dionex IC systems.

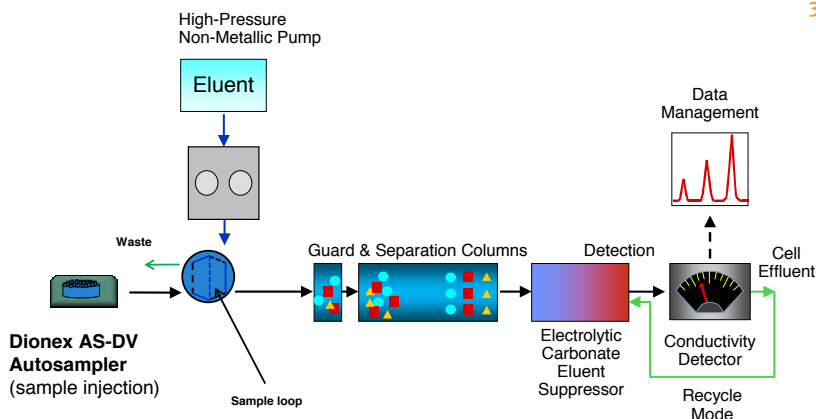


Figure 1. Flow diagram for the Dionex Integriion System.

Connect the USB cables from the Dionex Integriion HPIC system to the Dionex AS-DV autosampler and to the computer. Connect the power cables and turn on the IC instrument and the autosampler.

## Configuring the Modules in Chromeleon

To configure the IC system, first start the Chromeleon Instrument Controller program and then select the link, *Configure Instruments*, to open Chromeleon Instrument Configuration Manager. Right-click on computer name, select *Add an Instrument*, and enter an appropriate name (for example: Integriion\_EPA300\_1). Add the following modules to this instrument configuration: Integriion HPIC system, Integriion HPIC Pump Wellness, and Dionex AS-DV Autosampler.

## Integriion HPIC System Module

Select *Add a Module, IC: Dionex Integrated Modules*, and *Integriion HPIC System* (Figure 2). The configuration for each module is summarized at the end of this section in Table 2.

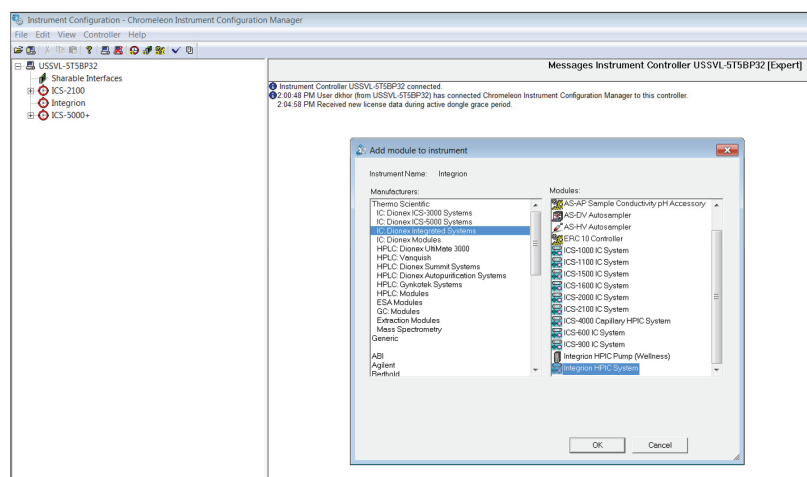


Figure 2. Creating a configuration.

A window with multiple tabs will automatically open up (Figure 3). Select the Model Serial No. on the General tab. Chromeleon CDS will automatically detect all electrolytic devices, detectors (Figure 3), Pump Degasser, and Seal Wash pump (not shown).

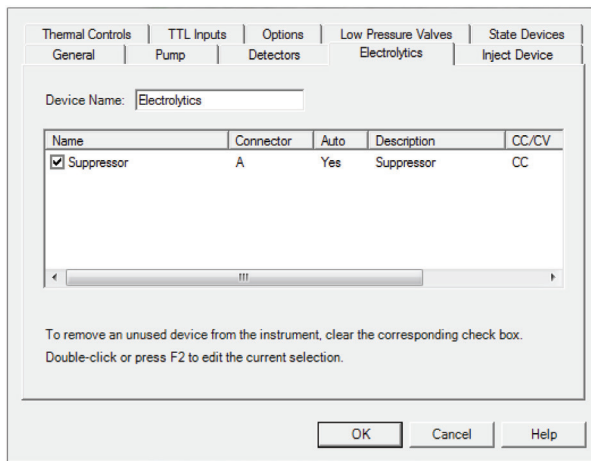


Figure 3. Automatic Detection of Electrolytic Devices.

### Integrion HPIC Pump Wellness Module

To add pressure monitoring capabilities, it is necessary to add another module: right-click and select *Add a Module*, *IC: Dionex Integrated Modules, Integrion HPIC Pump Wellness* module and then select the USB address to link the module to the configuration. Select the Devices tab and click on the Pressure Signal(s) box (Figure 4).

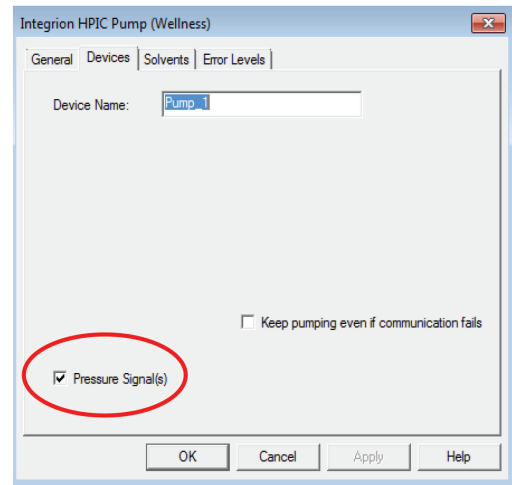


Figure 4. Adding the Integrion HPIC Pump Wellness Module to the Instrument Configuration.

### Add a Dionex AS-DV Autosampler to the Configuration

Add a new module by selecting the Dionex AS-DV autosampler. Right-click on the module and select the USB address. Leave all parameters with the default options.

Table 2. System configuration for Dionex Integrion HPIC System.

Tab	Action	Result
<b>Integrion HPIC Module</b>		
<b>General</b>	Link to USB address	-
<b>Pump</b>	-	Flow rate and pressure limitations are displayed
<b>Detectors</b>	-	Automatically detected
<b>Electrolytics</b>	-	Automatically detects suppressor (Figure 3)
<b>Inject Device</b>	-	Automatically detected
<b>Thermal Controls</b>	-	Automatically detects thermal control options for column. Thermal control for detector and suppressor are not available for this model.
<b>High-Pressure Valves</b>	-	Automatically detected
<b>Low-Pressure Valves</b>	-	Automatically detected
<b>Options</b>	-	Automatically detects Pump Degasser and Seal Wash pump
<b>Pump Wellness module</b>		
<b>Devices</b>	Check Pressure Signal(s) box	Activates pressure monitoring feature (Figure 4)
<b>Add Autosampler</b>		
<b>Add Dionex AS-DV autosampler module</b>	Link to USB address	Leave all settings on default

## Plumbing the High-Pressure Dionex Integriion System

First loosen the waste lines, including the metal-wrapped waste line, in the back of the instrument and direct the free ends to a waste container. To plumb the system, first connect the pump eluent line to the eluent bottle containing 4.5 mM sodium carbonate/1.4 mM sodium bicarbonate eluent. Prime the pump by opening the priming knob ¼ turn and pressing the priming button. Prime the pump until no bubbles are visible and water is flowing at a steady rate out of the pump waste line. Close priming knob to finger-tight. For more information, review the Integriion Operations Manual<sup>1</sup> by selecting “?” on the tablet.

### Dionex IC Viper fittings

Tip: To achieve the best chromatography, it is important to gently tighten the Dionex IC Viper fittings to finger-tight and to use the Viper fitting assemblies in the following locations (Figure 5):

- Injection Valve -- “Column” port to the guard column
- Between the guard and separation columns
- Separation column to *Eluent In* on the Dionex AERS 500 Carbonate Suppressor
- Dionex AERS 500 Carbonate Suppressor -- *Eluent Out* to *Eluent In* on CD Conductivity Cell

Dionex IC Viper fittings (Figure 5) minimize void volume in critical chromatography components, such as the columns and suppressor. These fittings are also recommended for use in consumable devices, such as the eluent generator cartridge and trap column to minimize installation issues. The tubing is standard for both standard bore and microbore column applications.

The tubing length is specified for each connection (see Table 1). The recommended practice is to tighten the Viper fittings to finger-tight and then, if leaking is observed, an additional 1/16 to 1/8 turn clockwise. Caution: Using a wrench or any other tool to tighten the IC Viper fittings may permanently damage the Viper fitting.



Figure 5. Dionex IC Viper Fittings.

Important: Do not remove consumables tracking device tags from the columns or consumable devices. These tags are required for monitoring functionality.

### Conditioning Suppressor and Columns

To hydrate the Dionex ERS 500 Suppressor, follow the QuickStart Instructions received with the suppressor or those in the suppressor product manual.<sup>2</sup> Wait for 20 min for the suppressor to fully hydrate before installing the suppressor in the Detector compartment. Install the black PEEK (0.010 in i.d. tubing) backpressure loop from the slotted compartment next to the CD detector (exerting an additional ~40 psi) between the CD outlet and the suppressor *Regen In* port.

Condition the columns for 30 min according to the instructions from the *Consumables, Install Column* section in the Chromeleon software (Figure 6). The general practice is use the eluent and flow rate conditions listed in the QAR report while directing the eluent exiting the column to a waste container.<sup>3</sup> Complete the installation according to the Figure 1 flow diagram.

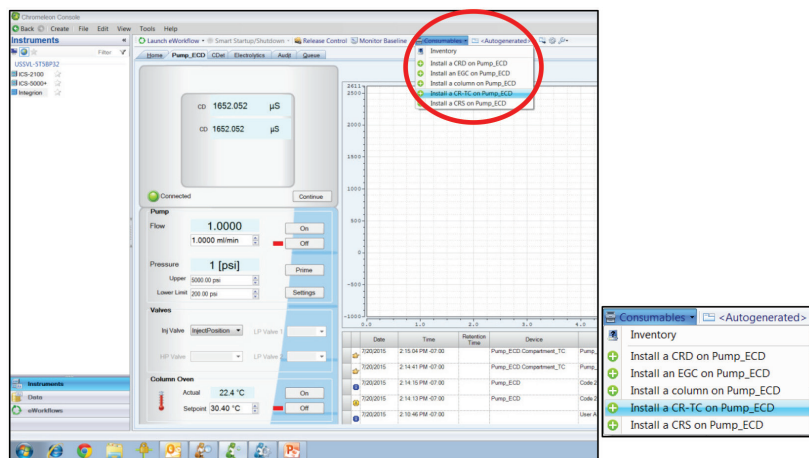


Figure 6. Consumables online installation instructions.

### Installing the Dionex AS-DV Autosampler

Install the autosampler transfer line into Port S in the injection valve. For more information review the Thermo Scientific Dionex AS-DV Operator's Manual.<sup>4</sup>

### Starting the Dionex Integriion System

To start the system, turn on the pump and immediately turn on the Dionex ERS 500 Carbonate Suppressor when liquid is flowing through the device. Set the eluent concentration and suppressor current, compartment oven, and cell temperatures as shown in the Chromatographic Conditions section. Allow the system to equilibrate for 30 min.

### Creating an Instrument Method

To create a new instrument method using the Chromeleon Wizard, select Create, Instrument Method, and select an Instrument. Enter the values from the Chromatographic Conditions section and those in Table 3 for the Dionex AS-DV autosampler (See also Figure 7). Save the instrument method.

Table 3. Additional conditions to create a program.

Page Title	Mode	Action
Preparation Options for AS-DV	Option 1: Full injection of sample vial	Edit Mode, Advanced, DeliverSample, Command: Full
	Option 2: Injection of set volume (10 µL as example)	Edit Mode, Advanced, DeliverSample, Command: 10 µL
	Option 3: Injection based on flush volume	Edit Mode, Basic
	-	To estimate flush volume: Enter loop volume (µL) in Total Volume Delivered Estimator. Will add in delay volume *10x flush factor for a total volume of 1350 µL

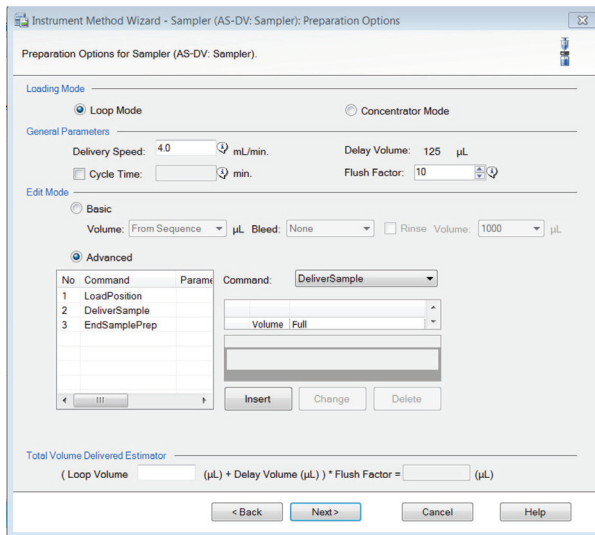


Figure 7. Creating an instrument program when using the Dionex AS-DV autosampler (Option 1 is shown).

### Consumable Device Monitoring

Tip: An action (either approve or correct an incompatibility between devices) is required to start a sequence after installing a new consumable device.

A new feature of the Dionex Integrion HPIC system is cable and radio frequency device monitoring and tracking, which automatically detects the electrolytic devices and the columns. Review and approval of the devices is required to start the first sequence on the Dionex Integrion system and when new consumables are installed. To access this approval, select *Consumables* and then *Inventory* (Figure 8). The device monitoring shows the device history, tracking: *Part No.*, *size*, *serial numbers*, *manufacture lot*, installed location (*On Device*), and *Best if Used by Date* (Figure 8, top). Additionally, the device monitoring will provide warnings if there is incompatibility with the devices installed (Figure 8, bottom left). To start the sequence, correct any errors, review the inventory, *Approve*, and *Close* the page (Figure 8, bottom right). Then select the Instrument Queue tab, and conduct a *ready check* on the sequence and *Start*.

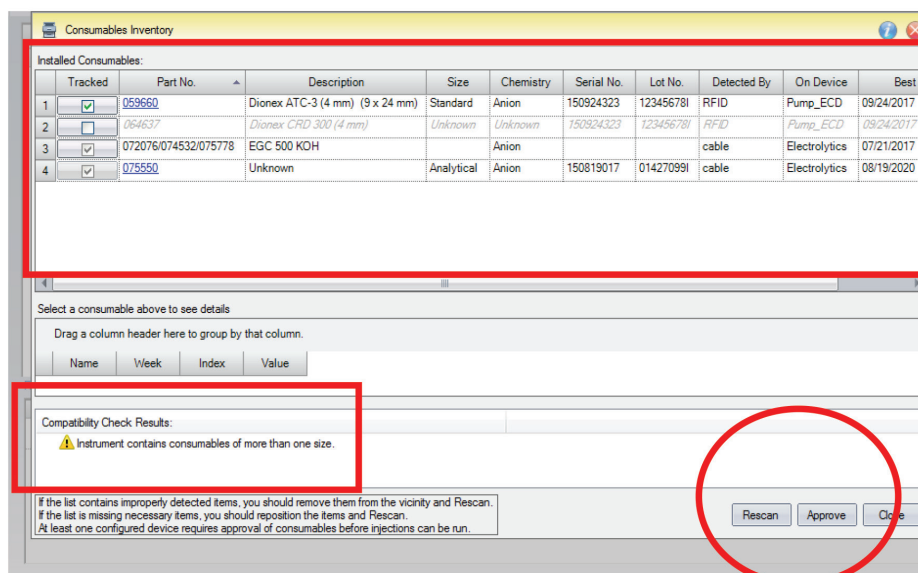


Figure 8. Consumables tracking.



## Results and Discussion

The determination of inorganic anions in municipal drinking, waste, and bottled waters according to the U.S. EPA Methods 300.0 and 300.1 is the most popular and widely used IC method. The Dionex IonPac AS22 column family represents the latest innovation in columns optimized for inorganic anion separations using carbonate eluents. The Dionex IonPac AS22 column family includes:

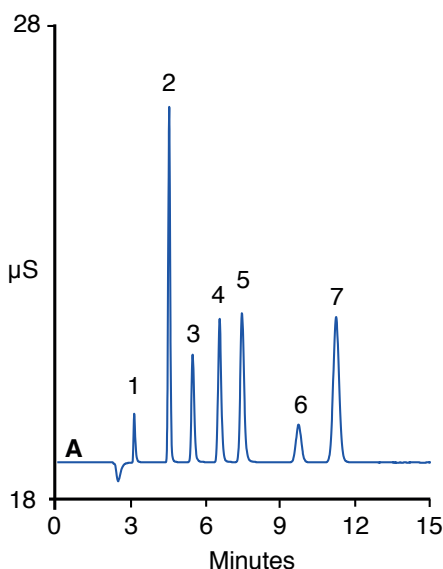
- Three formats of the 250 mm length, 6  $\mu\text{m}$  super macroporous resin particle columns (0.4 mm, 2 mm, and 4 mm i.d.) when higher resolution is needed for more complex samples,
- Two formats of the IonPac AS22-Fast, 150 mm length, 6  $\mu\text{m}$  super macroporous resin particle columns (2 mm, and 4 mm i.d.) for faster separations of well-defined samples,
- Three formats of the IonPac AS22-Fast-4 $\mu\text{m}$  150 mm length, 4  $\mu\text{m}$  super macroporous resin particle columns (0.4 mm, 2 mm, and 4 mm i.d.) combining higher resolution with faster runs.

Three formats of Dionex IonPac AS22 anion exchange columns—a 250 mm length column with 6  $\mu\text{m}$  resin particles (4 mm i.d.), and two 150 mm length columns with 4  $\mu\text{m}$  resin particles, (4 and 2 mm i.d.)—were used to demonstrate the determination of anions with the new Dionex AERS 500 Carbonate Suppressor on the Dionex Integrion system. This suppressor was designed and optimized for carbonate eluents; as a result, the noise is low, < 1 nS.

An anion standard was run under the same conditions at 1.2 mL/min on two formats of 4 mm i.d. Dionex IonPac AS22 column (Figure 9).

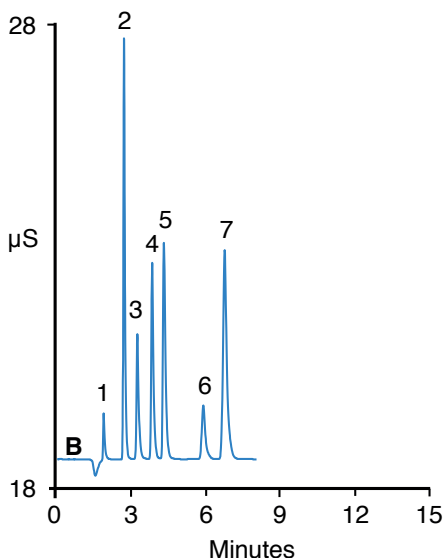
Figure 9. Chromatogram A -- the standard length Dionex IonPac AS22 column (4  $\times$  250 mm) with 6  $\mu\text{m}$  resin particles. The system backpressure was relatively low at ~ 1800 psi.

Figure 9 Chromatogram B -- the fast 4  $\mu\text{m}$  resin particle column, the Dionex IonPac AS22-Fast-4 $\mu\text{m}$ . The chromatograms demonstrate that both applications (7 min versus 12 min runs) can be run on the Dionex Integrion HPIC system. With the Dionex IonPac AS22-Fast-4 $\mu\text{m}$  column the system backpressure was 50% higher at ~ 2700 psi.



Column: A: Dionex IonPac AG22  
Dionex IonPac AS22, 4  $\times$  250 mm  
Eluent: 4.5 mM Sodium Carbonate  
1.4 mM Sodium Bicarbonate  
Flow Rate: 1.2 mL/min  
Inj. Volume: 10  $\mu\text{L}$   
Column Temp.: 30  $^{\circ}\text{C}$   
Detection: Suppressed conductivity,  
Dionex AERS 500 Carbonate, 4 mm,  
41 mA, recycle mode  
System  
Backpressure: ~ 1800 psi  
Peaks: 1. Fluorid 1.0 mg/L  
2. Chlorid 12  
3. Nitrite 8.0  
4. Bromide 9.0  
5. Sulfate 10  
6. Nitrate 9.0  
7. Phosphate 6.5

Figure 9A. Seven anion standard.



Column: B: Dionex IonPac AG22-Fast-4 $\mu\text{m}$   
Dionex IonPac AS22-Fast-4 $\mu\text{m}$ ,  
4  $\times$  150 mm  
Eluent: 4.5 mM Sodium Carbonate  
1.4 mM Sodium Bicarbonate  
Flow Rate: 1.2 mL/min  
Inj. Volume: 10  $\mu\text{L}$   
Column Temp.: 30  $^{\circ}\text{C}$   
Detection: Suppressed conductivity,  
Dionex AERS 500 Carbonate, 4 mm,  
41 mA, recycle mode  
System  
Backpressure: ~ 2700 psi  
Peaks: 1. Fluoride 1.0 mg/L  
2. Chloride 12  
3. Nitrite 8.0  
4. Bromide 9.0  
5. Sulfate 10  
6. Nitrate 9.0  
7. Phosphate 6.5

Figure 9B. Seven anion standard.

In Figure 10, anions in a diluted, filtered swimming pool water sample were determined in 7 min at 1.2 mL/min on the 4 mm Dionex IonPac AS22-Fast-4 $\mu$ m column. The system backpressure was ~ 2700 psi.

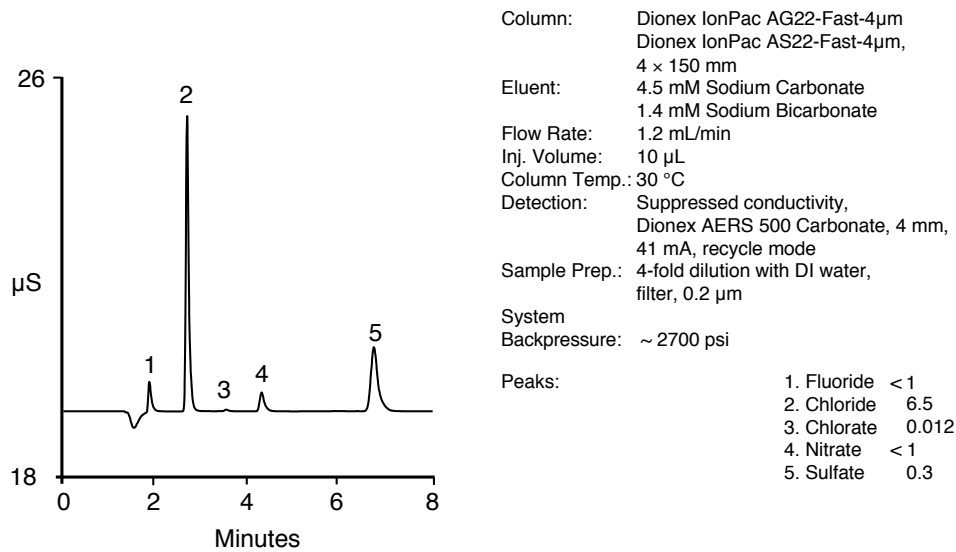


Figure 10. Fast Determinations of anions in a pool water sample.

In Figure 11, anions in a municipal drinking water sample were determined in 5 min at 0.5 mL/min on the 2 mm, the Dionex IonPac AS22-Fast-4 $\mu$ m column. The flow rate is equivalent to 2.0 mL/min on the 4 mm i.d. format. The system backpressure was ~ 2600 psi.

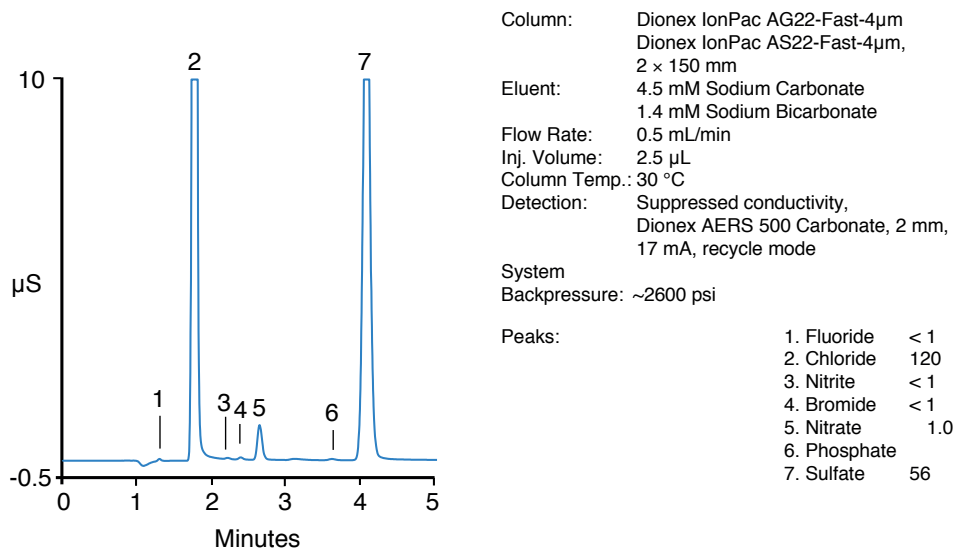


Figure 11. Fast determination of anions in a municipal drinking water sample.



## Conclusion

The installation and set up of the Dionex Integrion system were discussed.

The analysis of environmental water samples was demonstrated using different format Dionex IonPac AS22 columns:

- The standard 4 × 250 mm length, with 6 µm resin particle particles
- The 4 × 150 mm length, with 4 µm resin particle particles
- The 2 × 150 mm length, with 4 µm resin particle particles

Seven anions were separated using manually prepared carbonate/bicarbonate eluents and detected by suppressed conductivity with the Dionex AERS 500 Carbonate suppressor designed and optimized for carbonate eluents. The system noise was low at < 1 nS.

## References

1. Thermo Fisher Scientific. Dionex Integrion Operator's Manual. P/N 22153-97003, Sunnyvale, CA, 2016.
2. Thermo Fisher Scientific. Dionex ERS 500 Suppressor Product Manual. P/N 031956-09, Sunnyvale, CA, August 2015.
3. Thermo Fisher Scientific. IonPac AS22-Fast-4µm Column Product Manual. P/N 065604-01, Sunnyvale, CA, August 2014.
4. Thermo Fisher Scientific. Dionex AS-DV Autosampler Operator's Manual. Document No. 065259, Sunnyvale, CA, October 2012.

## [www.thermoscientific.com/chromatography](http://www.thermoscientific.com/chromatography)

©2016 Thermo Fisher Scientific Inc. All rights reserved. ISO is a trademark of the International Standards Organization. All other trademarks are the property of Thermo Fisher Scientific and its subsidiaries. This information is presented as an example of the capabilities of Thermo Fisher Scientific products. It is not intended to encourage use of these products in any manners that might infringe the intellectual property rights of others. Specifications, terms and pricing are subject to change. Not all products are available in all countries. Please consult your local sales representative for details.



<b>Africa</b> +43 1 333 50 34 0	<b>Denmark</b> +45 70 23 62 60	<b>Japan</b> +81 6 6885 1213	<b>Russia/CIS</b> +43 1 333 50 34 0
<b>Australia</b> +61 3 9757 4300	<b>Europe-Other</b> +43 1 333 50 34 0	<b>Korea</b> +82 2 3420 8600	<b>Singapore</b> +65 6289 1190
<b>Austria</b> +43 810 282 206	<b>Finland</b> +358 10 3292 200	<b>Latin America</b> +1 561 688 8700	<b>Sweden</b> +46 8 556 468 00
<b>Belgium</b> +32 53 73 42 41	<b>France</b> +33 1 60 92 48 00	<b>Middle East</b> +43 1 333 50 34 0	<b>Switzerland</b> +41 61 716 77 00
<b>Brazil</b> +55 11 3731 5140	<b>Germany</b> +49 6103 408 1014	<b>Netherlands</b> +31 76 579 55 55	<b>Taiwan</b> +886 2 8751 6655
<b>Canada</b> +1 800 530 8447	<b>India</b> +91 22 6742 9494	<b>New Zealand</b> +64 9 980 6700	<b>UK/Ireland</b> +44 1442 233555
<b>China</b> 800 810 5118 (free call domestic) 400 650 5118	<b>Italy</b> +39 02 950 591	<b>Norway</b> +46 8 556 468 00	<b>USA</b> +1 800 532 4752