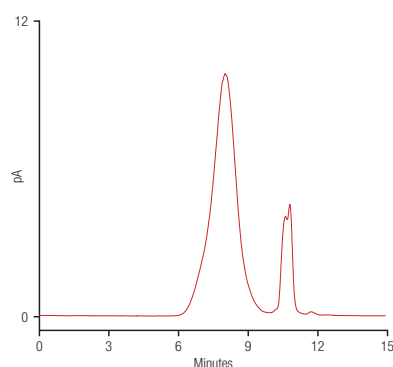


Size Exclusion Chromatography of Gum Arabic Using Acclaim SEC-1000



Column: Acclaim SEC-1000
 Dimension: 4.6 x 300 mm
 Mobile Phase: 100 mM ammonium acetate pH5.0
 Temperature: 25 °C
 Flow Rate: 0.35 mL/min
 Injection Volume: 5 µL
 Detection: Corona *ultra* Charged Aerosol Detector
 Sample: Gum Arabic, 5 mg/ mL



PB20715_E 01/13S

Gum Arabic is a complex mixture of glycoproteins and polysaccharides. It is used primarily in the food industry as a stabilizer. Gum Arabic is a key ingredient in traditional lithography and is used in printing, paint production, glue, cosmetics and various industrial applications. As shown here, the Acclaim SEC-1000, combined with a charged aerosol detector (CAD) and a volatile mobile phase, provides a viable solution to determine the molecular weight distribution of Gum Arabic.