



Windows 7 Professional (64-bit) for MassHunter Workstation

Setup Guide

- Step 1. Set up Windows 7 [2](#)
- Step 2. Rename the network adapters [7](#)
- Step 3. Set the network adapter IP addresses [10](#)
- Step 4. Change firewall settings for the LC-MS instrument network adapter [12](#)
- Step 5. Confirm that Telnet Client and TFTP Client are enabled [16](#)
- Step 6. Disable the HP Support Assistant [18](#)
- Step 7. Set up Microsoft Update [22](#)
- Step 8. Install MassHunter programs [23](#)

Before you can install MassHunter software on Windows 7 Professional, you need to set up the operating system.

Note that installations on computers not supplied by Agilent are supported on a best-effort basis only. Additional support can be purchased from the Agilent field support team.

Minimum Requirements

The minimum computer specifications to run MassHunter programs on Windows 7 Professional (64-bit) are:

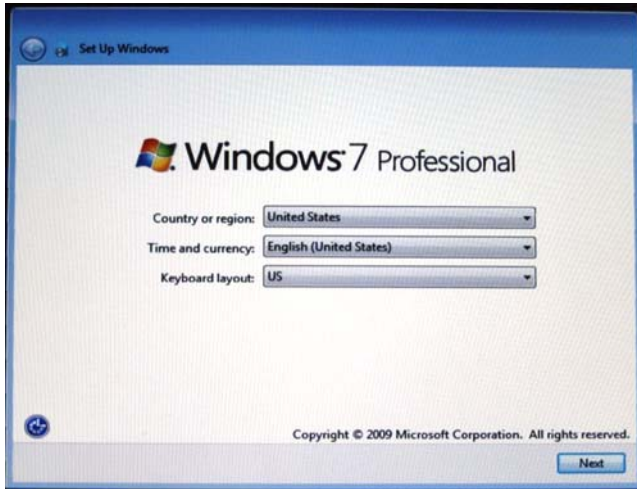
- HP Z400 Xeon W3520 Quad Core Processor
- 8 GB of 1333 MHz ECC RAM
- 4 × 500 GB SATA HDD in a RAID 1+0 configuration (mirrored and striped)
- 80 GB C partition and a 851 GB D partition
- For MassHunter Acquisition, additional network adapter



Step 1. Set up Windows 7

Step 1. Set up Windows 7

The first time that Windows 7 Professional starts up after installation, you are prompted for setup information.

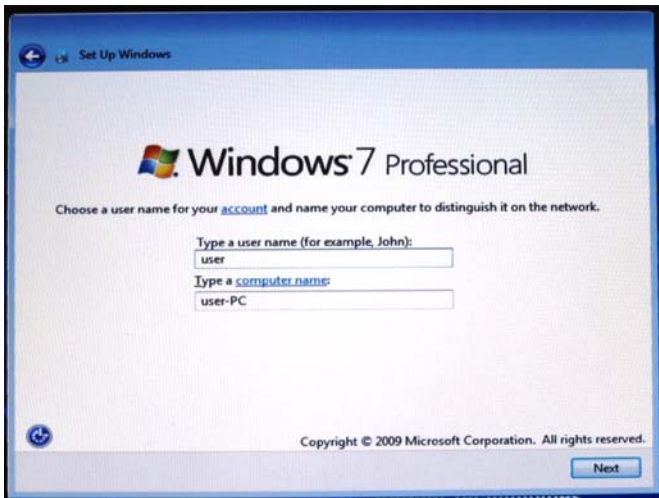


- 1 When prompted, select your **Country or region**, **Time and currency**, and **Keyboard layout**, then click **Next**.

Only these operating systems are supported:

- English (United States)
- Japanese (for MassHunter Qualitative Analysis and Quantitative Analysis programs)
- Simplified Chinese (for MassHunter Qualitative Analysis and Quantitative Analysis programs)

Step 1. Set up Windows 7

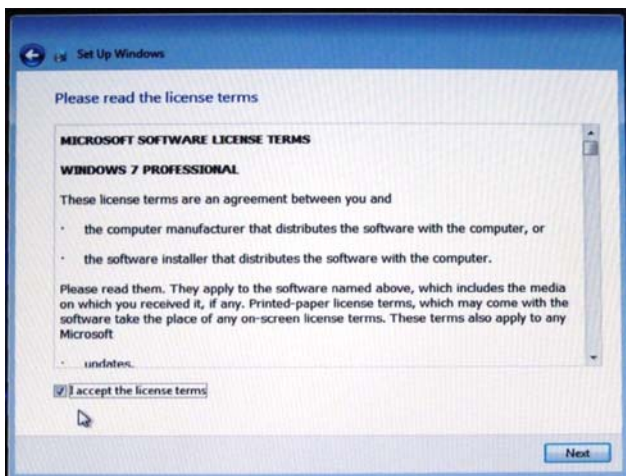


- 2 Create a user name and password for a user that will be a member of the Administrators group.

For Agilent bundle computers, create a new user other than “admin.” The user name “admin” with password “3000hanover” is already created when the Emergency Recovery Disk is used.



Step 1. Set up Windows 7



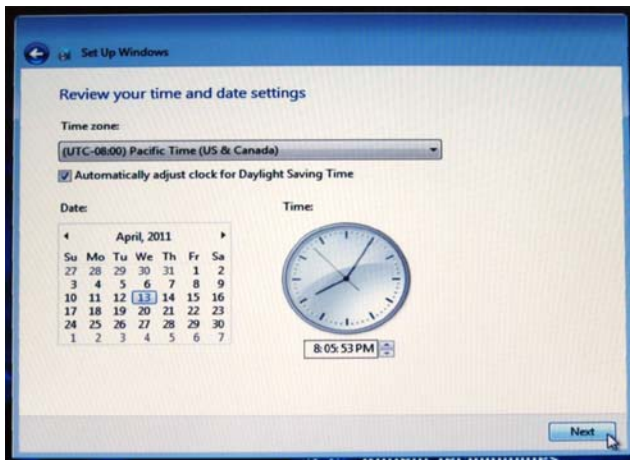
- 3 Read Microsoft's license terms for Windows 7 Professional. Select **I accept the license terms** and click **Next**.



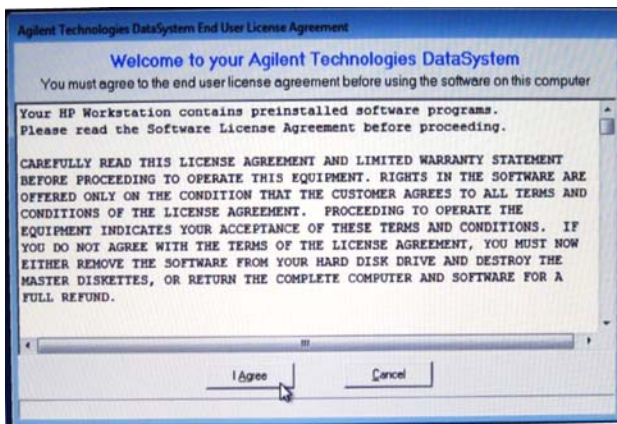
- 4 Click **Ask me later** when prompted to turn on Microsoft Updates, then click **Next**.

If you choose to turn on Microsoft Updates, be aware that an update can automatically restart your computer, which could cause MassHunter programs to fail.

Step 1. Set up Windows 7



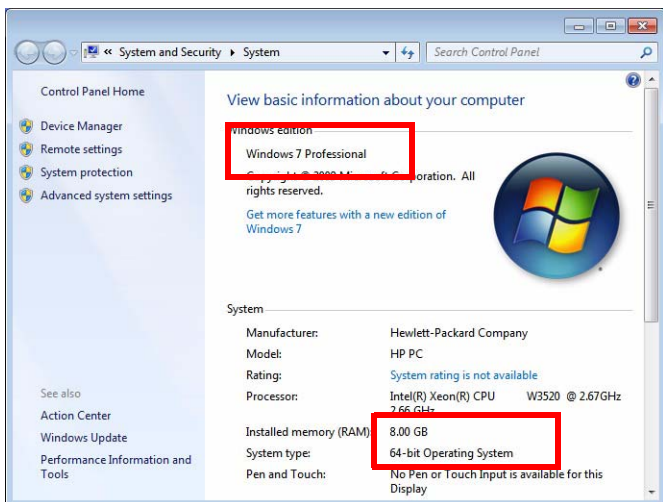
5 Set up the time and time zone for the computer.



6 If you are prompted to accept the End User License Agreement, click **I Agree**.

7 If you are prompted to reboot the computer, ignore this message. Do not restart the computer.

Step 1. Set up Windows 7



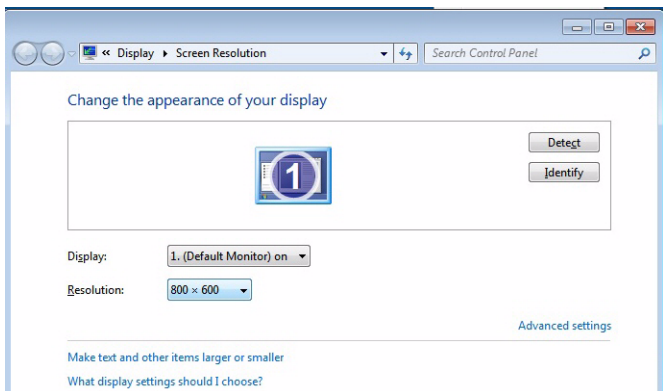
8 Right-click the **Computer** icon on the Desktop and select **Properties**.

9 Confirm that your computer meets minimum requirements:

- Windows 7 Professional
- 8 GB of RAM
- 64-bit system type

If the incorrect operating system is installed, get media and a license for Windows 7 Professional (64-bit) and reinstall the operating system.

10 Restart the computer.



11 After you restart the computer, if the screen resolution is not properly reset, then:

- a Right-click the Desktop and click **Screen resolution**.
- b Change the resolution to the correct resolution for the monitor.

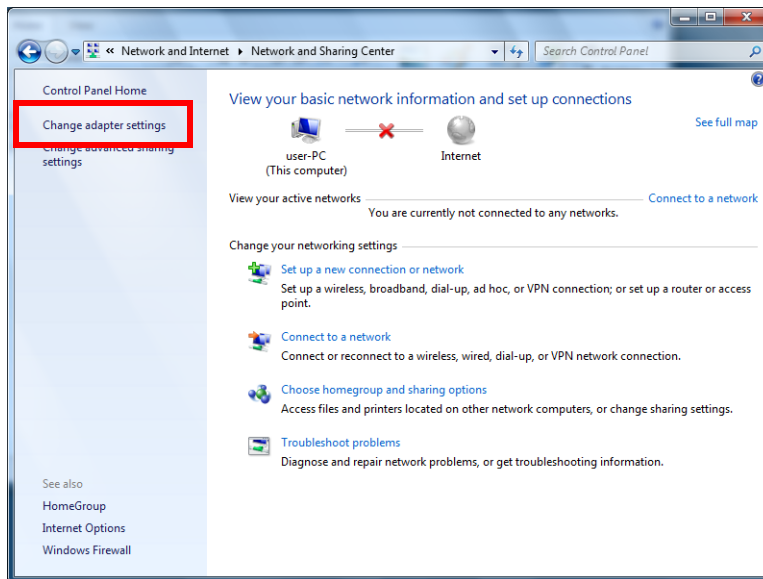
The MassHunter Data Acquisition, Qualitative Analysis, and Quantitative programs require a minimum screen resolution of 1280 × 1024.

For efficient data processing, set the resolution to 1680 × 1050 or higher. Agilent LC/MS instruments ship with a minimum monitor resolution of 1680 × 1050.

For maximum picture clarity, operate LCD monitors at their native resolution. Lower than native resolution causes blurred images.

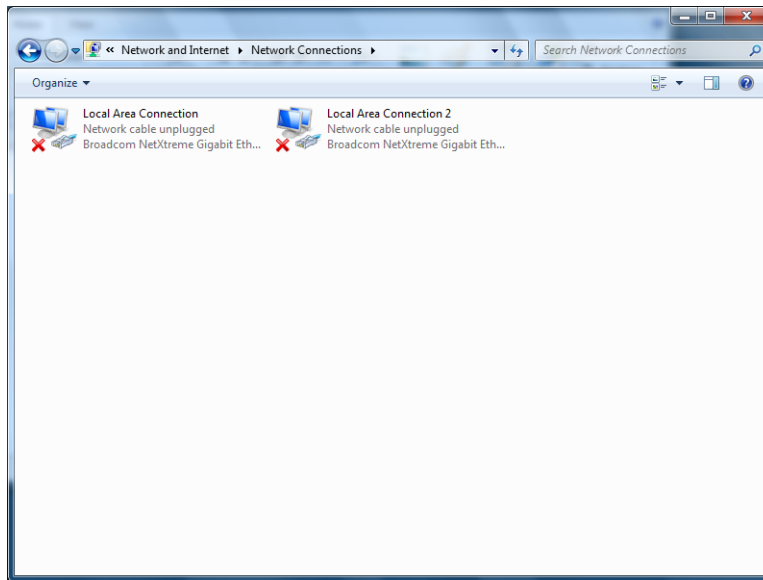
Step 2. Rename the network adapters

- 1 Select **Start > Control Panel**.
- 2 From the Control Panel, select **Network and Internet > Network and Sharing Center > View network status and tasks**.
- 3 From the left menu, select **Change adapter settings**.



You will see two network connections, Local Area Connection and Local Area Connection 2. Neither are connected at this time.

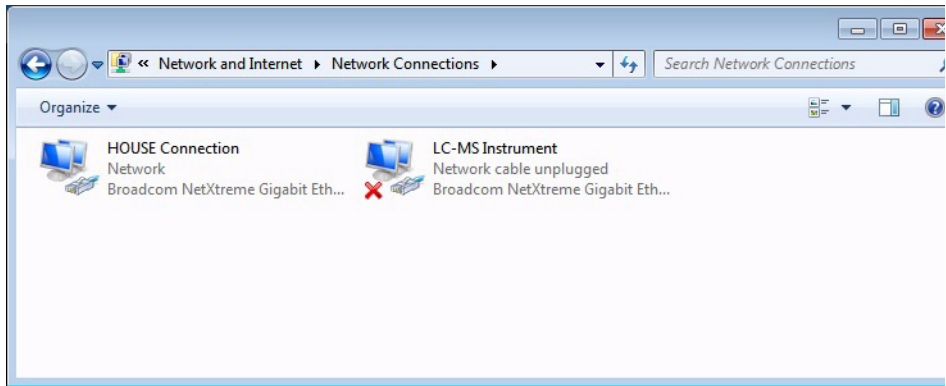
Step 2. Rename the network adapters



- 4 Identify the onboard network adapter:
 - a Connect a network cable to the onboard network adapter on the back of the computer.
 - b Note which Local Area Connection is enabled.

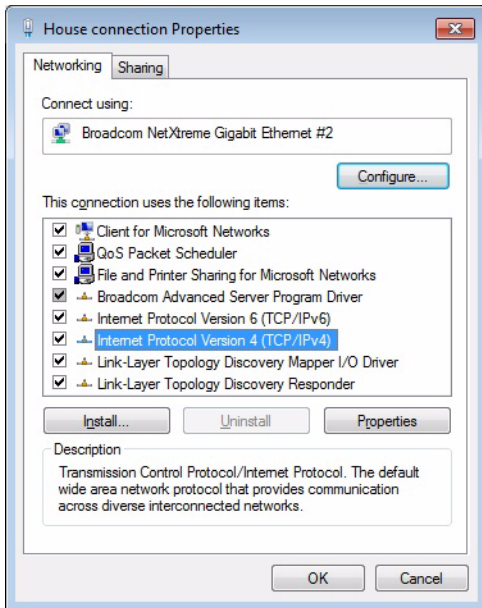
Typically, the onboard network adapter is **Local Area Connection**.
- 5 Right-click the Local Area Connection for the onboard network adapter and select **Rename**. Change the name to HOUSE connection.
- 6 Right-click the other Local Area Connection icon and select **Rename**. Change the name to LC-MS Instrument.

Step 2. Rename the network adapters

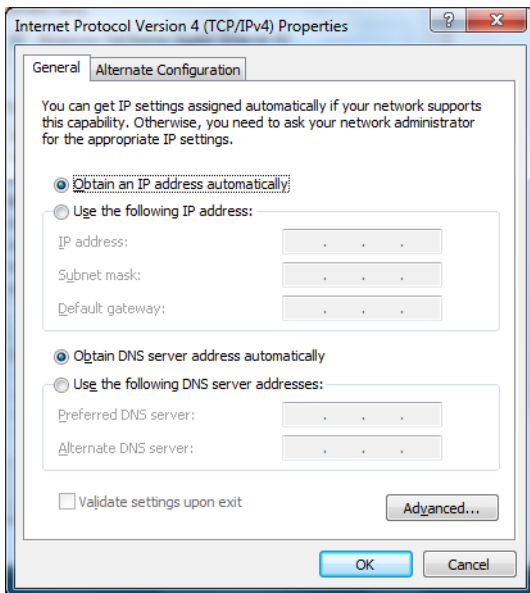


Step 3. Set the network adapter IP addresses

Step 3. Set the network adapter IP addresses

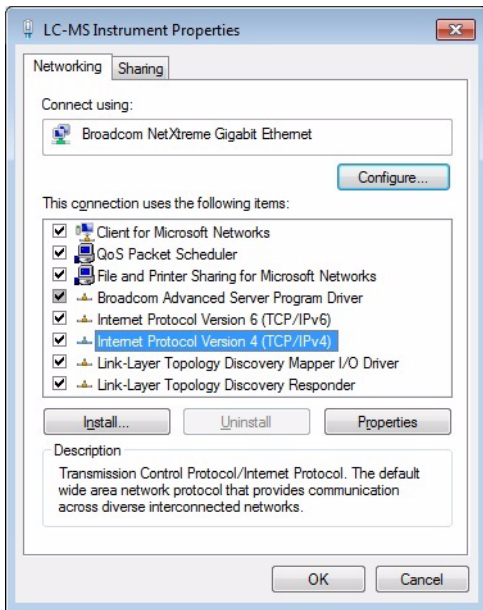


- 1 Right-click **HOUSE connection** and select **Properties**.
- 2 Double-click **Internet Protocol Version 4 (TCP/IPv4)**.

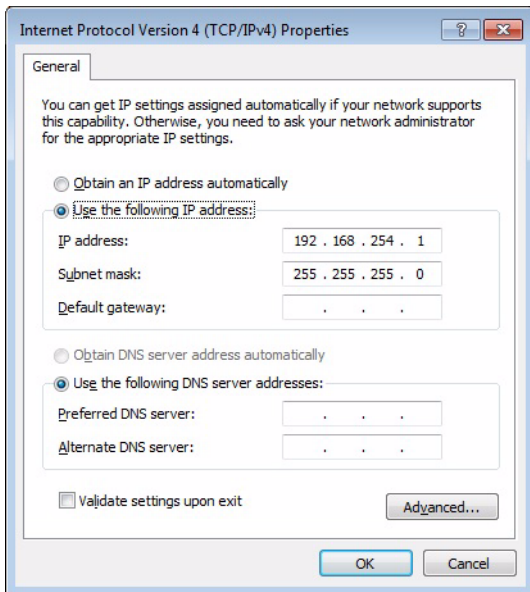


- 3 In the General tab:
 - a Make sure **Obtain an IP address automatically** is selected.
 - b Click **OK** twice to return to the Network Connections dialog box.

Step 3. Set the network adapter IP addresses



- 4 Right-click **LC-MS Instrument** and select **Properties**.
- 5 Double-click **Internet Protocol Version 4 (TCP/IPv4)**.



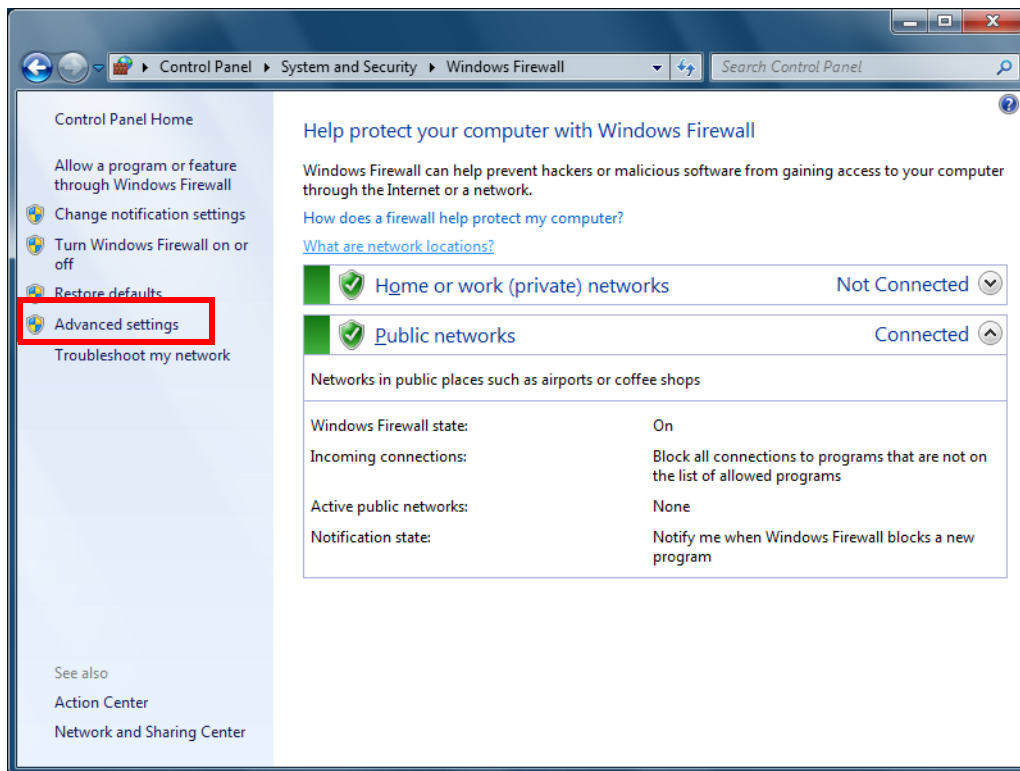
- 6 In the **General** tab:
 - a Select **Use the following IP address**.
 - b For **IP address**, type 192.168.254.1.

The Subnet mask automatically populates as 255.255.255.0. Leave the Default Gateway and DNS Server lines empty.
 - c Click **OK** twice to return to the Network Connections panel.

Step 4. Change firewall settings for the LC-MS instrument network adapter

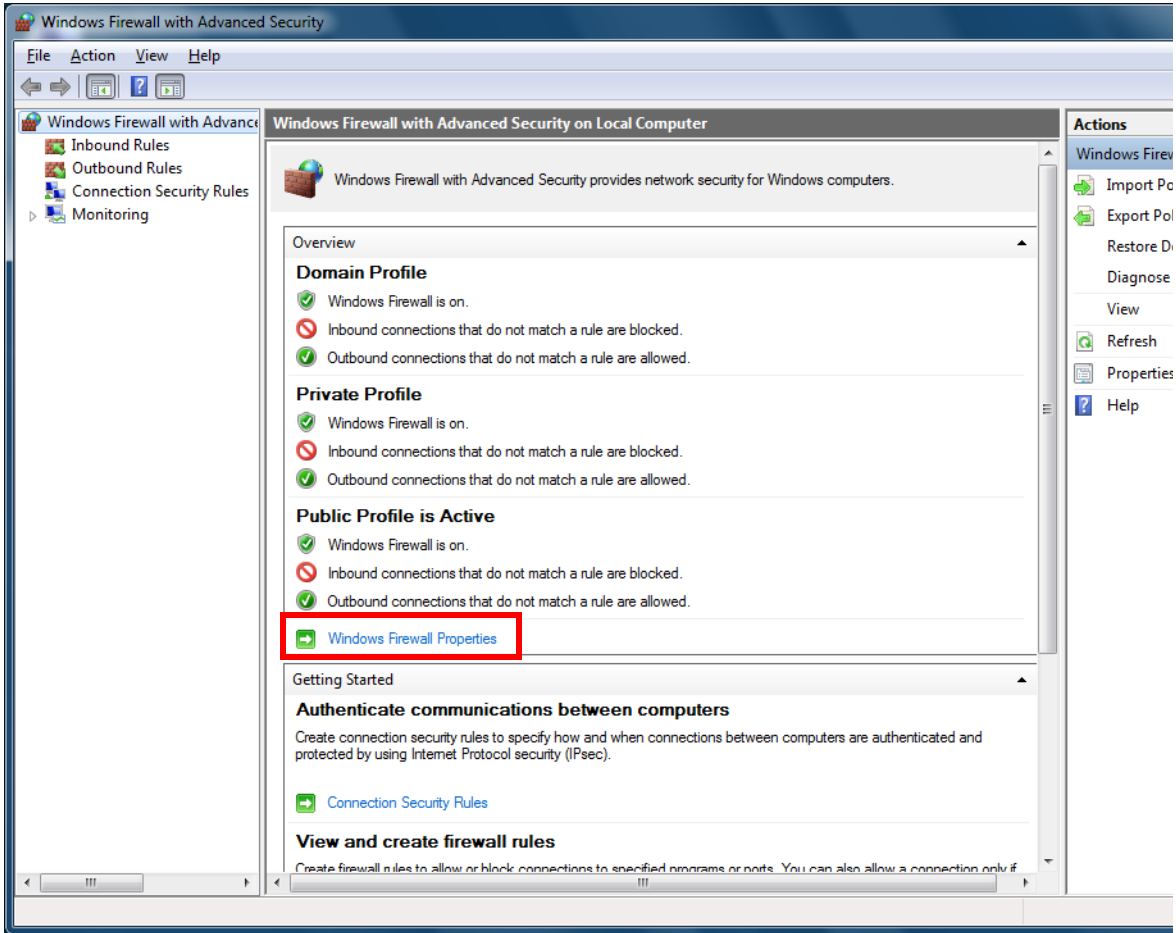
Step 4. Change firewall settings for the LC-MS instrument network adapter

- 1 Return to the Control Panel view.
- 2 Click **System and Security** > **Windows Firewall**.
- 3 From the left menu, click **Advanced settings**



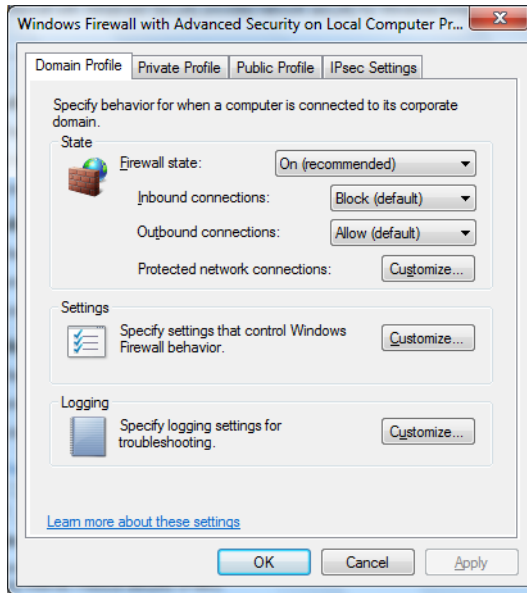
Step 4. Change firewall settings for the LC-MS instrument network adapter

4 Under **Overview**, click **Windows Firewall Properties**.

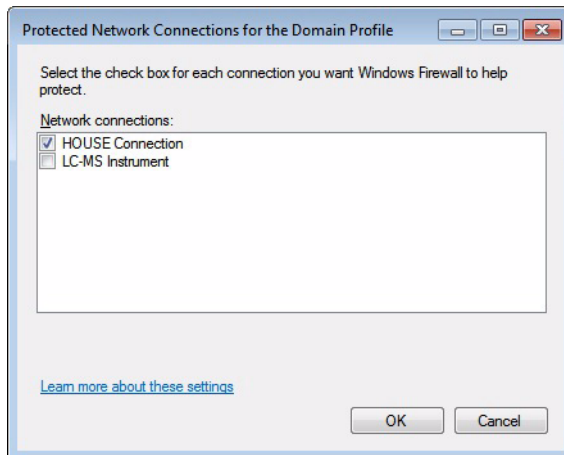


Step 4. Change firewall settings for the LC-MS instrument network adapter

- 5 In the **Domain Profile** tab, next to **Protected network connections**, click **Customize**.

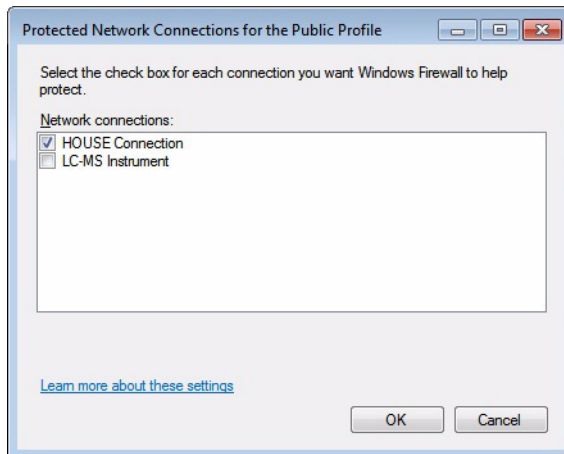
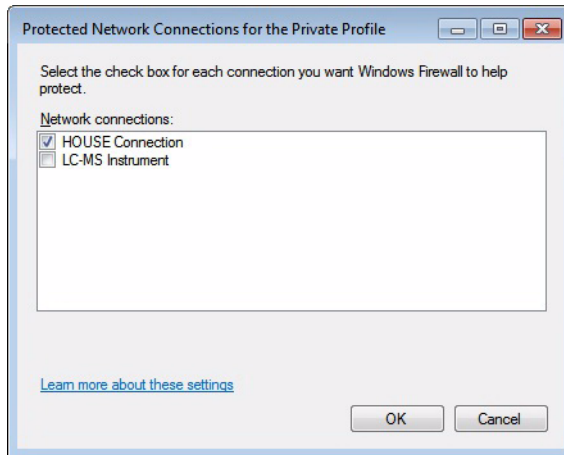


- 6 Clear the **LC-MS Instrument** check box, and then click **OK**.



Step 4. Change firewall settings for the LC-MS instrument network adapter

- 7 Repeat the [step 5](#) and [step 6](#) for the **Private Profile** and **Public Profile** tabs.

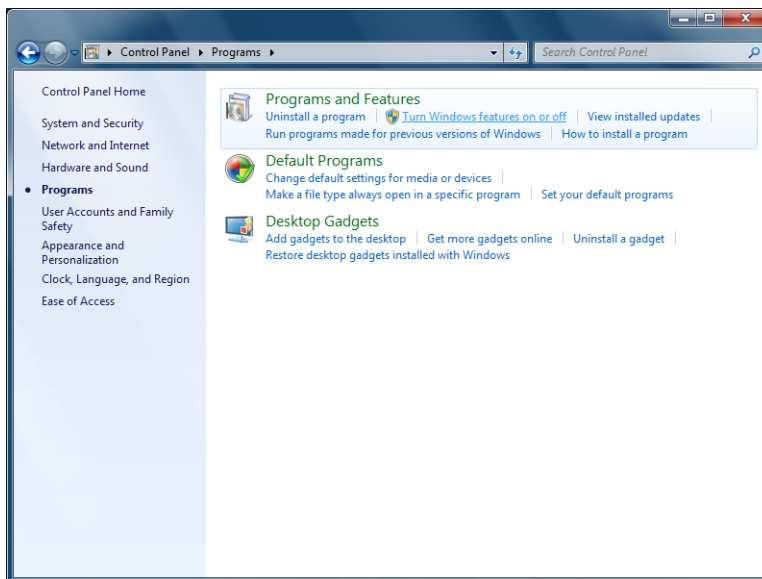


- 8 Click **OK** to close the Windows Firewall with Advanced Security on Local Computer Properties dialog box.
- 9 Close the Windows Firewall with Advanced Security window.

Step 5. Confirm that Telnet Client and TFTP Client are enabled

Step 5. Confirm that Telnet Client and TFTP Client are enabled

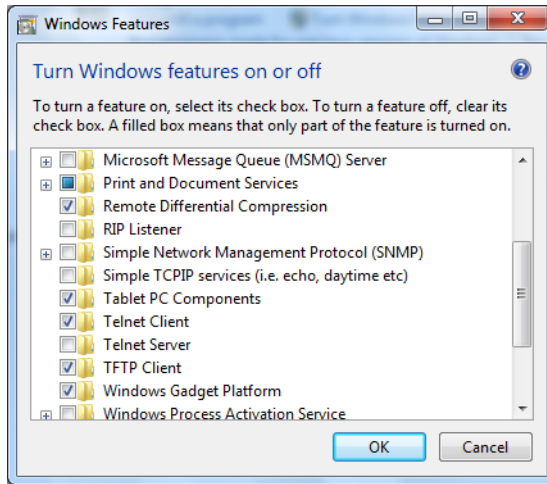
- 1 Return to the Control Panel view and click **Programs**.



- 2 Under **Programs and Features**, click **Turn Windows features on or off**.
- 3 Verify that the **Telnet Client** and **TFTP Client** check boxes are selected.

These clients are required for the LC/MS Firmware Update Tool and for GC/MS instruments.

Step 5. Confirm that Telnet Client and TFTP Client are enabled



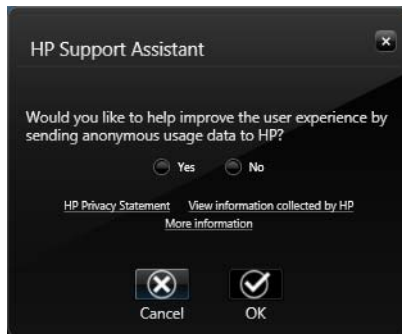
4 Press **OK** and close the Control Panel.

Step 6. Disable the HP Support Assistant

Step 6. Disable the HP Support Assistant

If your computer is a Hewlett-Packard computer, you must disable the HP Support Assistant so that it does not run scans while MassHunter programs are running.

- 1 Click **Start > All Programs > HP > HP Support Assistant**.
- 2 Click **Cancel**.



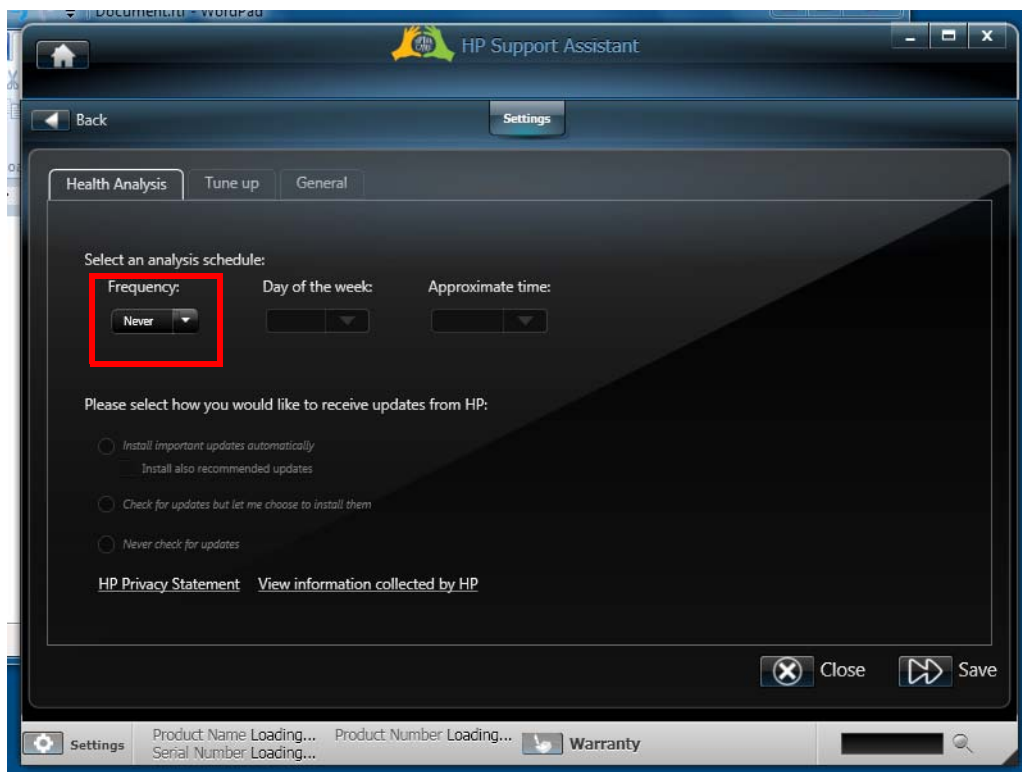
Step 6. Disable the HP Support Assistant

- 3 Click the **Settings** icon in the lower left corner. Make sure you click the icon and *not* the **Settings** label.

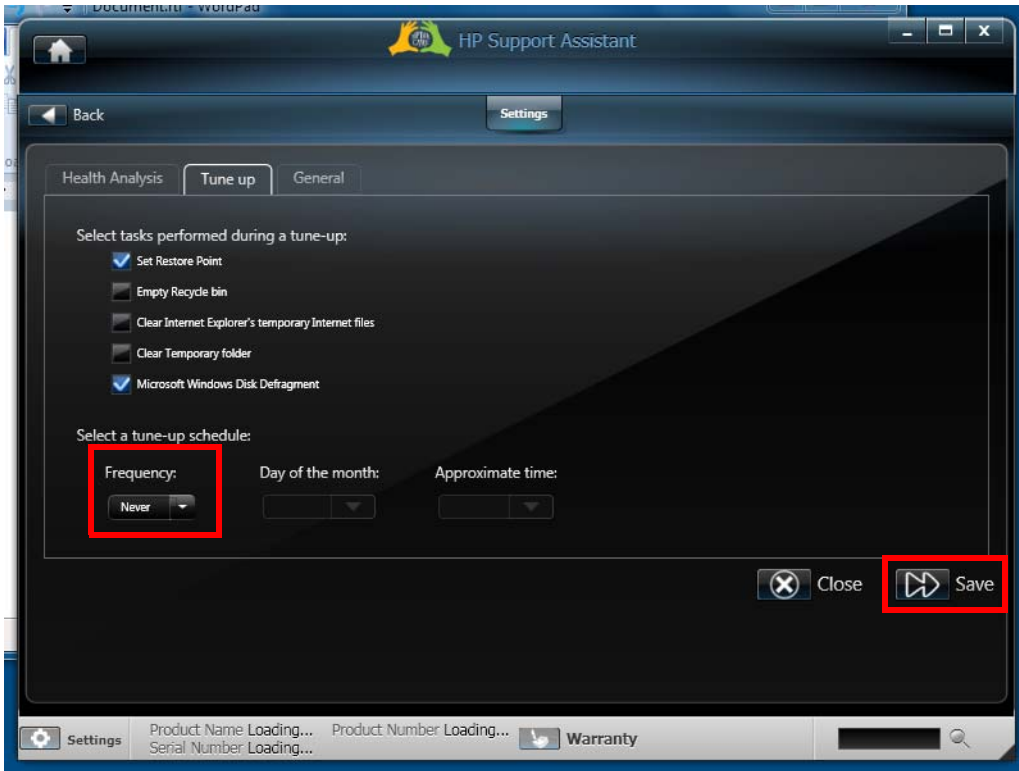


Step 6. Disable the HP Support Assistant

4 In the **Health Analysis** tab, change **Frequency** to **Never**.



5 In the **Tune up** tab, change **Frequency** to **Never**.



6 Click **Save** and then close the program.

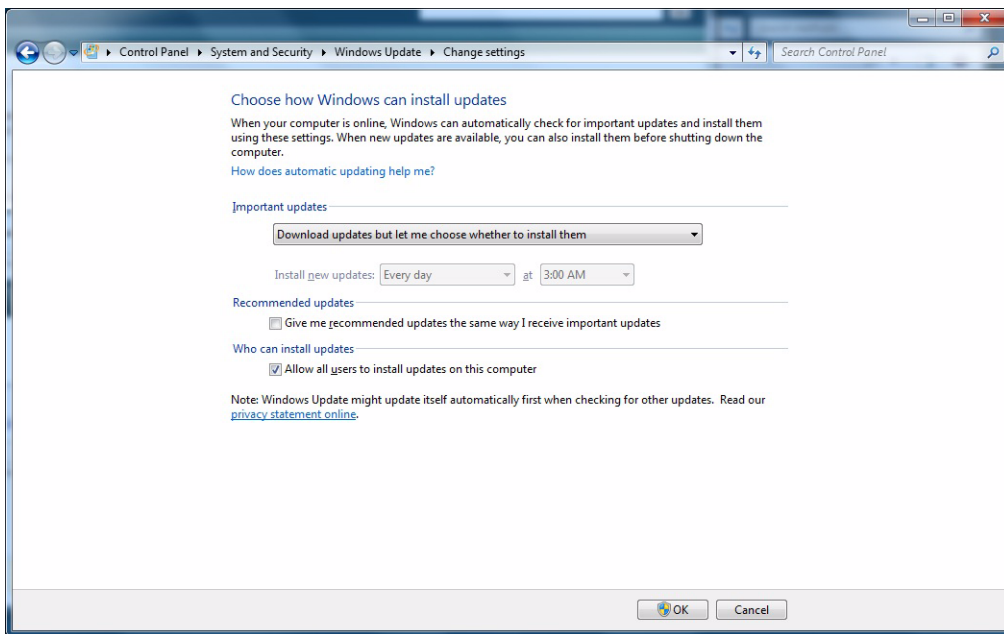
Step 7. Set up Microsoft Update

Agilent recommends that Microsoft Update is turned on if possible. However, an update can cause your computer to restart unexpectedly during data acquisition and cause you to lose data.

Do this step to set up Windows 7 so that it updates your computer only with user permission.

- 1 In the Control Panel, click **Systems and Security > Windows Update > Change settings**.
- 2 Under **Important updates**, select **Download updates but let me choose whether to install them**.
- 3 Click **OK** and close the Control Panel.

When the Control Panel is closed, if the computer is connected to the Internet, Windows immediately checks for updates. The list of suggested updates can be large.



Step 8. Install MassHunter programs

- Install MassHunter programs.

Follow the appropriate installation or upgrade guide. Note that on Windows 7, some MassHunter programs require that you run the installation program as administrator. The installation guide tells you which steps require that you right-click the installation command and select **Run as administrator**.

www.agilent.com

In This Book

This guide describes how to set up Windows 7 Professional (64-bit) for MassHunter Workstation, to prepare for MassHunter software installation.

Windows® is a registered trademark of Microsoft Corporation in the United States and other countries.

© Agilent Technologies, Inc. 2011

Revision A, April 2011



G3336-90016



Agilent Technologies