




How to Install and Activate Your EffiChem 4.0 TRIAL Version

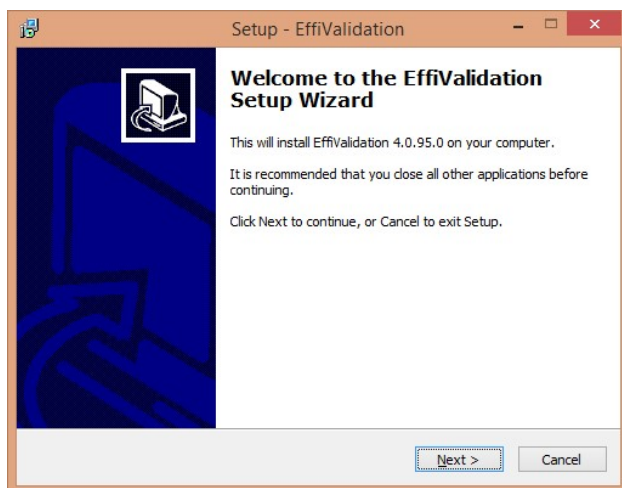
How to install and activate the EffiValidation 4.0 TRIAL version:

Please click on the URL link in the email to initiate the download process. Wait until completion, then double-click the installation file *setup.exe* and follow instructions on the screen.

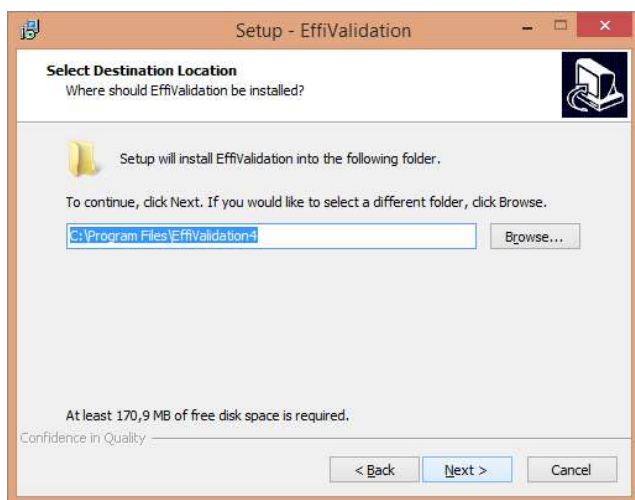
Remark: if you are requested to install Microsoft .NET  first, please do so and then continue following the instructions below.

1. Software installation

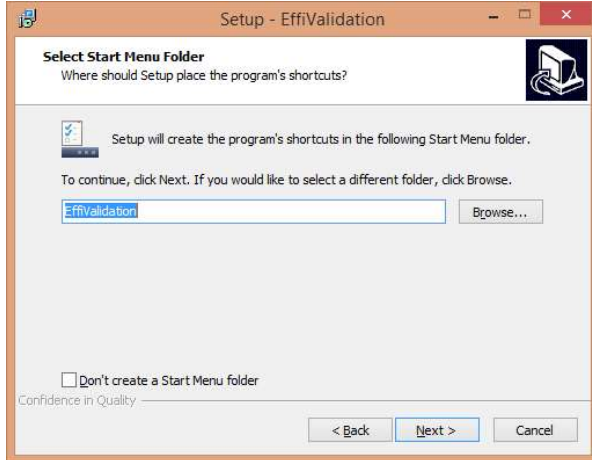
Select the language and click OK. The Setup – EffiValidation window will open:



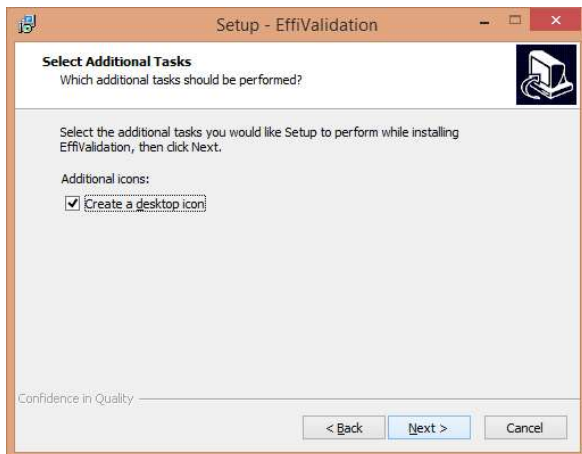
Click on *Next >* to continue



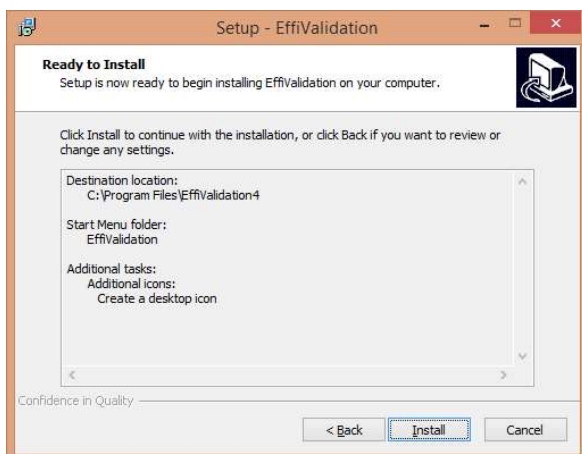
Click on *Next >* to continue. If you would like to select a different folder, click *Browse...*



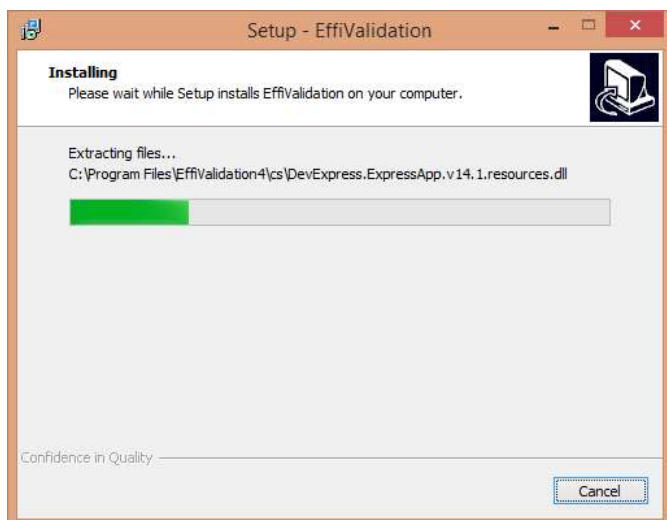
Click on *Next >* to continue. If you would like to select a different folder, click *Browse...*



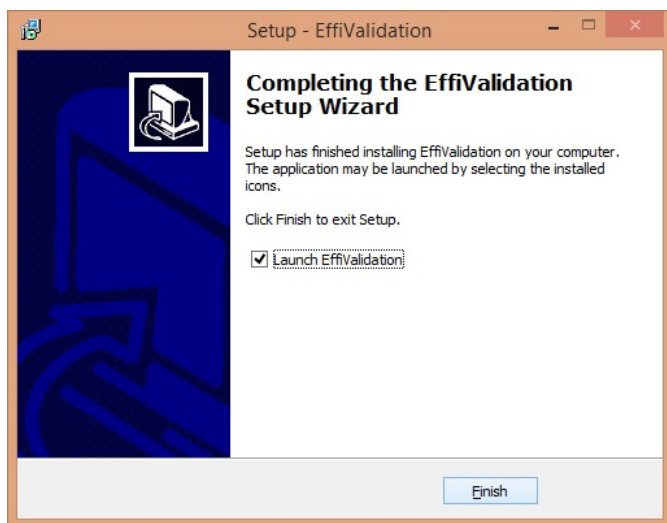
Click on *Next >* to continue



Click on *Install* to start the installation



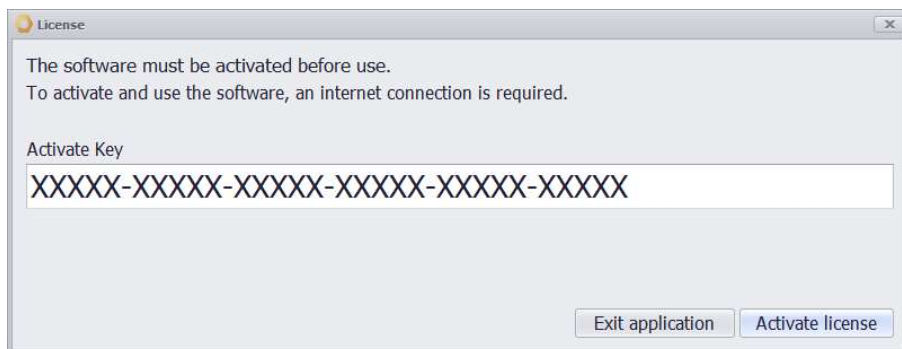
Follow the installation progress until completion



After completion, click on *Finish* and start the application (ensure that the checkbox Launch EffiValidation is checked).

2. License activation

When starting the application first time, software activation will be required. Please enter the *Activation key* you have received in this email below:



3. Start TRIAL version

If the activation has been successful, the User verification window will open:



Please enter:

User name: **admin**

Password: **admin**

Then click on *Login*

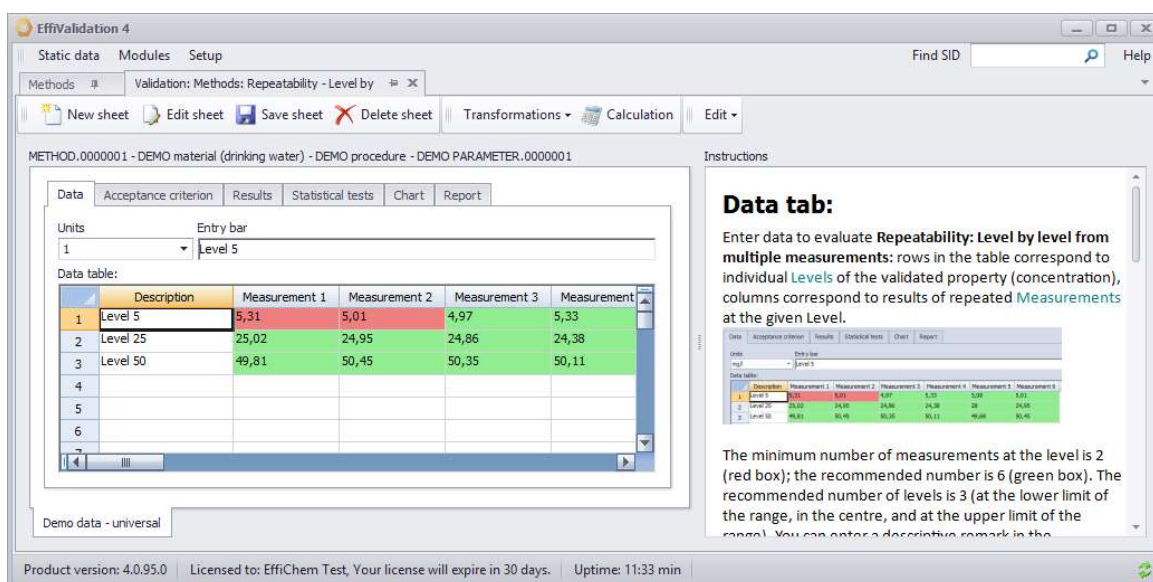
The main software window will open, including two tabs: *Methods* and *Validation: Methods: Repeatability...*, see below.

4. First steps

4.1 Method validation

The TRIAL version includes a set of DEMO data to show how the software works.

In the opened **Validation: Methods: Repeatability – Level by ...** window, you can walk through the individual tabs: Data – Acceptance criterion – Results – Statistical test – Chart – Report to see how the Repeatability data are entered, Acceptance criterion defined, Results calculated, the corresponding Chart constructed and validation Report automatically generated. For more details, please read Instructions on the right side of the software window and follow them when working with data:

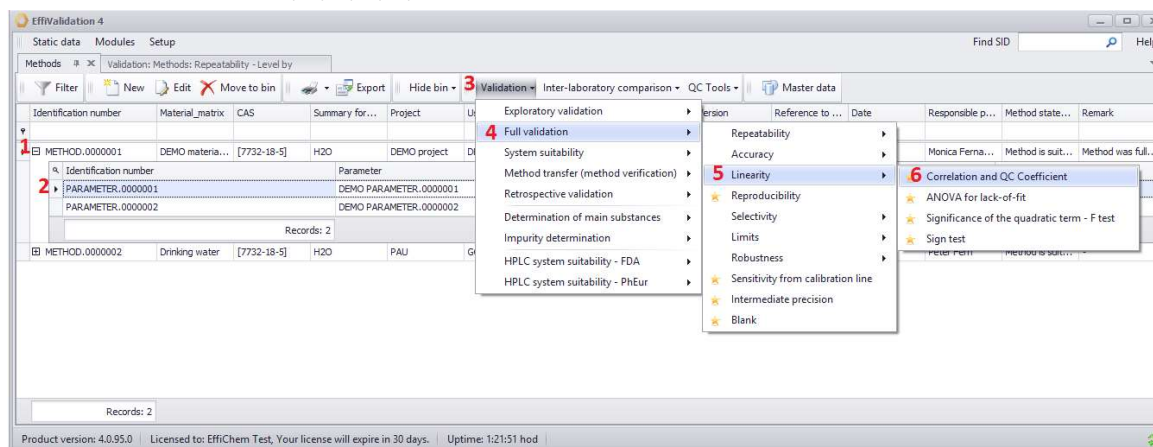


Data tab:
 Enter data to evaluate **Repeatability: Level by level** from **multiple measurements**: rows in the table correspond to individual **Levels** of the validated property (concentration), columns correspond to results of repeated **Measurements** at the given Level.

The minimum number of measurements at the level is 2 (red box); the recommended number is 6 (green box). The recommended number of levels is 3 (at the lower limit of the range, in the centre, and at the upper limit of the range). You can enter a descriptive remark in the

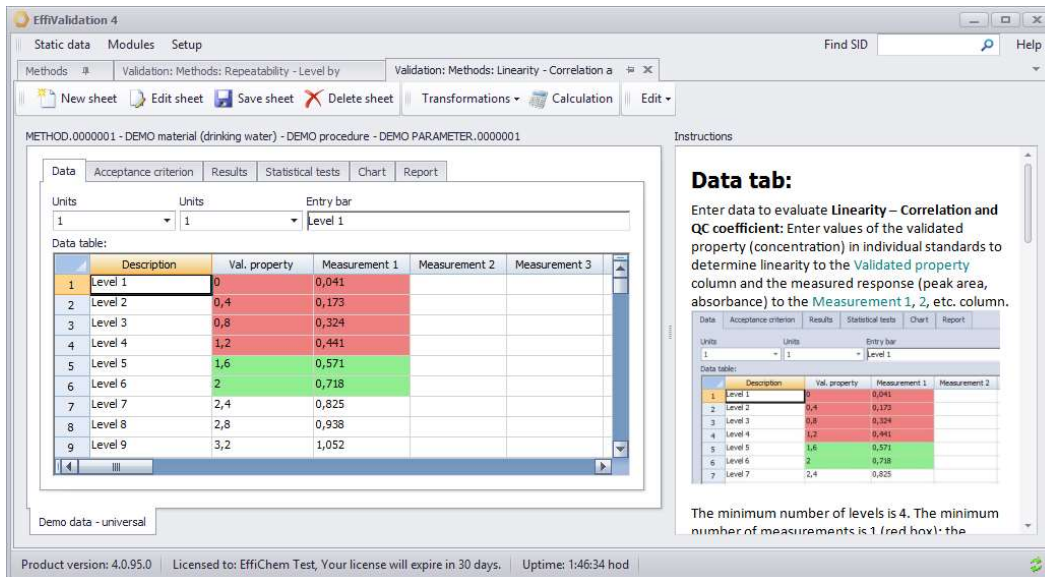
Description	Measurement 1	Measurement 2	Measurement 3	Measurement 4	Measurement 5
Level 5	5,31	5,01	4,97	5,33	
Level 25	25,02	24,95	24,86	24,38	
Level 50	49,81	50,45	50,35	50,11	
Level 75					
Level 100					

The other validation parameters can be evaluated accordingly, see Linearity example below. Go to the **Methods** tab and click 1, 2, 3, 4, 5, 6 as follows:



1 Full validation
 2 System suitability
 3 Method transfer (method verification)
 4 Retrospective validation
 5 Linearity
 6 Correlation and QC Coefficient

A new tab will be opened to evaluate Linearity (in the same way as Repeatability):



Data tab:
 Enter data to evaluate **Linearity – Correlation and QC coefficient**: Enter values of the validated property (concentration) in individual standards to determine linearity to the **Validated property** column and the measured response (peak area, absorbance) to the **Measurement 1, 2, etc. column**.

Description	Val. property	Measurement 1	Measurement 2	Measurement 3
Level 1	0	0,041		
Level 2	0,4	0,173		
Level 3	0,8	0,324		
Level 4	1,2	0,441		
Level 5	1,6	0,571		
Level 6	2	0,718		
Level 7	2,4	0,825		
Level 8	2,8	0,938		
Level 9	3,2	1,052		

The minimum number of levels is 4. The minimum number of measurements is 1 (red box): the

4.2 Laboratory and Quality management

In the main menu, please select the Module of interest and test functions, e.g. Samples:



Product version: 4.0.95.0 | Licensed to: EffiChem Test, Your license will expire in 30 days. | Uptime: 1:51:24 hod

Please do not hesitate to contact us at support@effichem.com if you have any question or if you encounter any issue with the installation or activation!