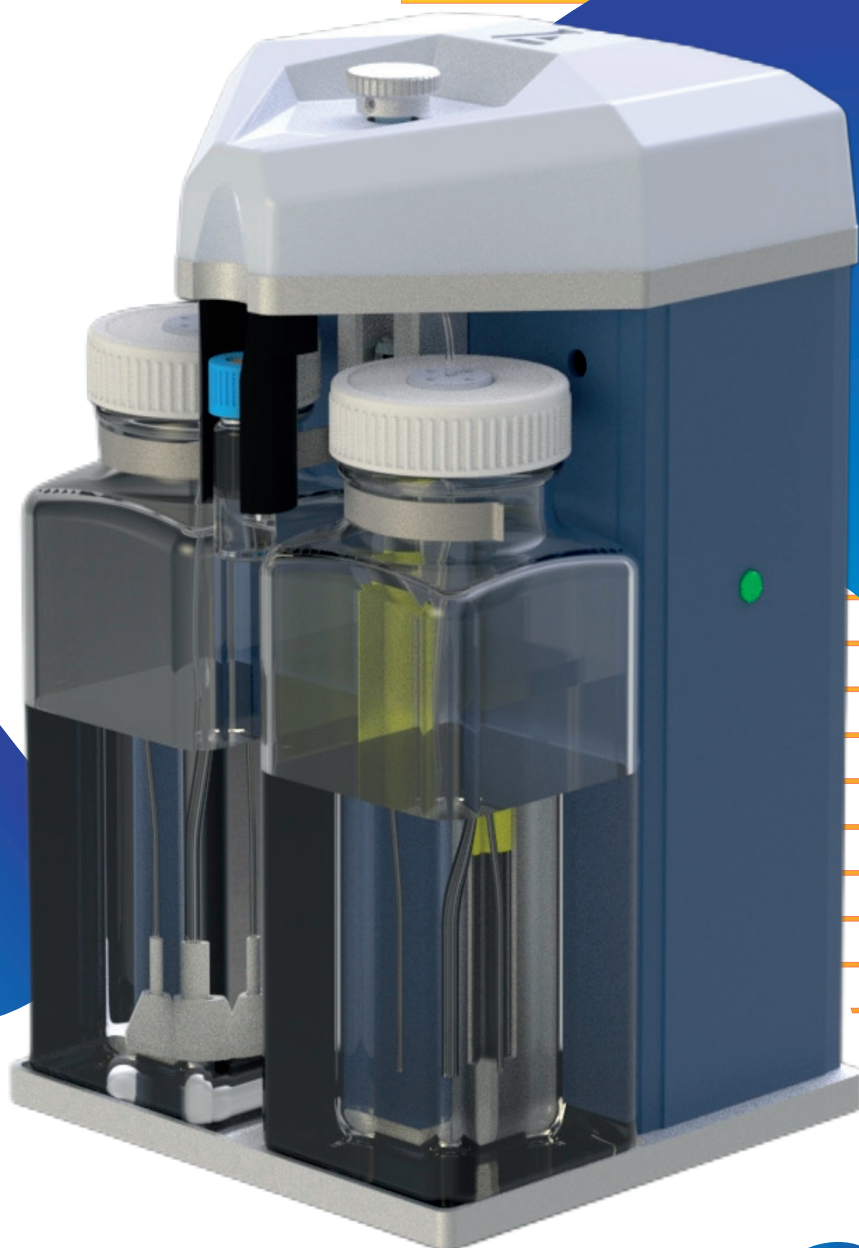


SiELC



CROMITE™ HPLC SYSTEM

Liquid Chromatography
Made Simple

Introduction

The Cromite™ HPLC System is a high-performance liquid chromatography (HPLC) instrument for scientific research and education. Compact yet powerful, it offers simplicity with advanced functionality. The instrument features automated single-vial injection, high-pressure flow, and sensitive UV/Vis detection for precise identification and quantitation of different compounds. Seamlessly integrating with cloud-based software, the Cromite™ enables remote operation, real-time monitoring, and effortless data sharing, fostering collaboration and supporting modern research workflows.

Key Features:

**High-Pressure Performance:**

With up to 4000 psi, it ensures effective separation, enhancing resolution and reproducibility.



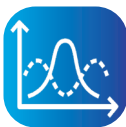
Ease of Use: User-friendly interface simplifies complex HPLC processes, requiring minimal training

**Compact and Efficient Design:**

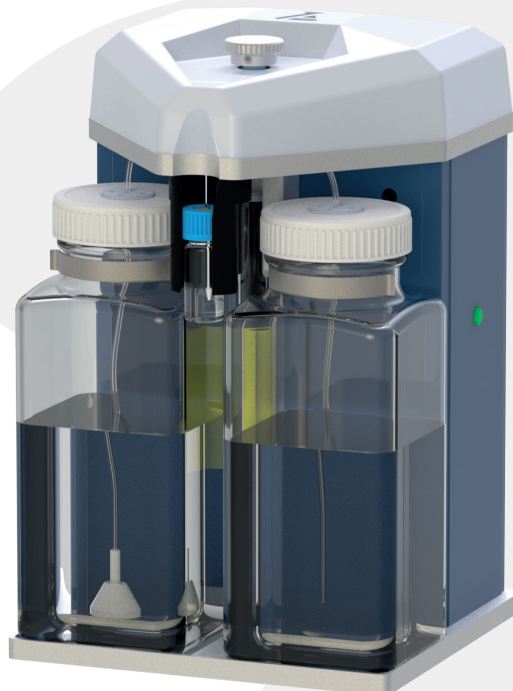
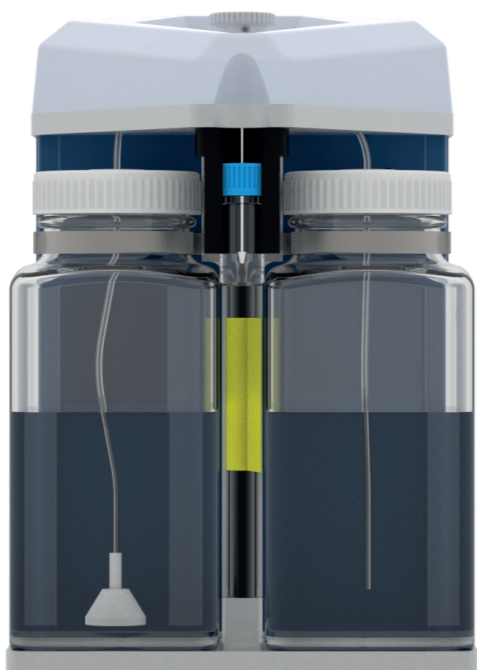
Weighing only 1.45 kg and measuring 115 x 190 x 115 mm, the Cromite™ is perfect for compact labs and classrooms.

**Cloud-Connected Software:** Innovative

HPLC.Cloud software, offers secure data collection, real-time view and data manipulation, data sharing, remote access, automatic software update, and cloud data storage enhancing efficiency and minimizing manual intervention.



Enhanced Detection: With UV/Vis detection and customizable four wavelengths from 235 nm, it provides precise flexibility for research with a wide range of different chemicals.



Key Features of HPLC.Cloud:

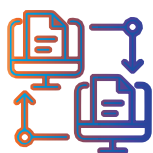
HPLC.Cloud Software



Cloud Platform:
Access data from
anywhere in the world



Method Management:
Remotely develop, store,
apply and share analysis
methods



Collaboration:
Ability to share
data and methods
with colleagues



Data Processing:
Includes powerful tools for
interpreting and visualizing
results



Secure:
Secure storage of
methods
and results.

The HPLC.Cloud is a software platform that streamlines high-performance liquid chromatography (HPLC) workflows. By connecting instruments directly to a secure cloud server, the software provides a centralized and flexible solution for managing HPLC operations.



Additional Service

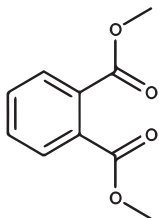
We offer free method development for your specific compounds to fully tailor the instrument to your needs.



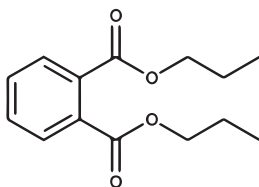
Demonstrating Practical Benefits

Legend for method: Isocratic HPLC Separation of Phthalates on Cromite™ HPLC System

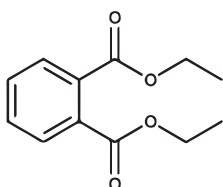
1. Dimethylphthalate (DMP)



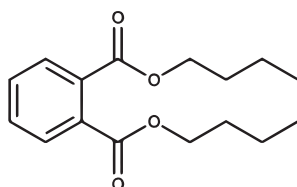
3. Dipropylphthalate (DPP)



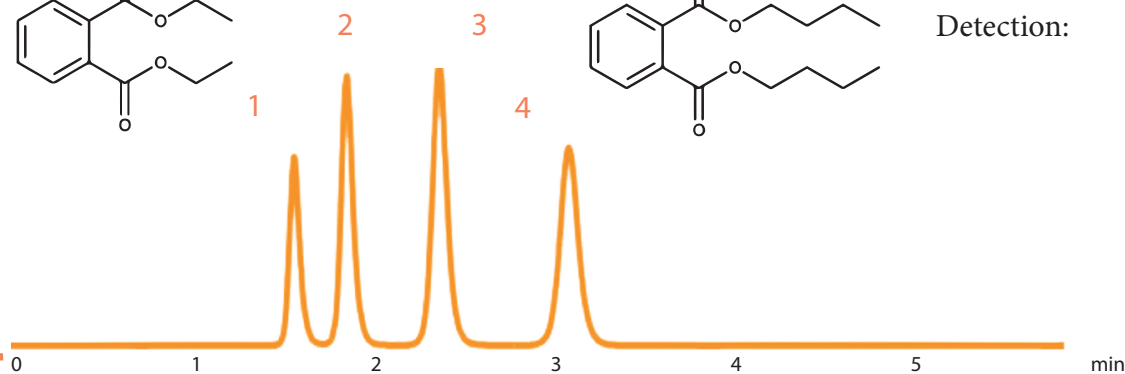
2. Diethylphthalate (DEP)



4. Dibutylphthalate (DBP)

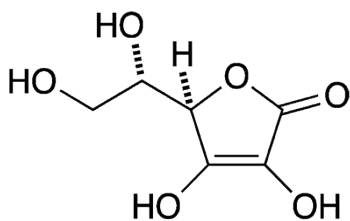


Column: Newcrom AH
Column size: 3.2 x 115 mm, 5 pm
Mobile phase: MeCN/H₂O - 50/50%
Buffer: H₂SO₄ - 0.1%
Flow rate: 0.5 mL/min
Detection: UV 275 nm

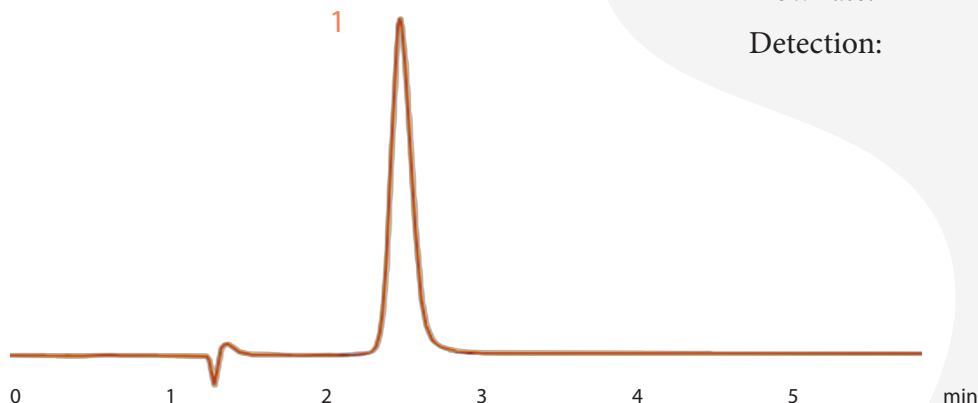


Legend for method: Isocratic HPLC Separation of Ascorbic Acid on Cromite™ HPLC System

1. Ascorbic Acid



Column: Primesep D
Column size: 3.2 x 100 mm, 5 pm
Mobile phase: MeCN/H₂O - 5/95%
Buffer: HCOOH - 0.1%
Flow rate: 0.5 mL/min
Detection: UV 275 nm



Technical Specifications

CROMITE™ HPLC SYSTEM

Dimensions (WHL)	115 x 190 x 115 mm / 4.5 x 7.5 x 4.5 in
Weight	1.45 kg / 3.15 lb
Injection	Automatic, 1 Vial
Pump	Syringe type, Isocratic
Flow rate	0.1 - 4.0 ml/min
Pressure	up to 4000psi
Detector signal	< 0.05 mAU
Detection Rate	20Hz
Wavelengths, standard	275, 460, 520, 630 nm
Wavelengths, custom	Any 4 starting from 235nm
Supported columns	3 and 2 mm ID
Column Length	115 mm or smaller
Connectivity	Wi-Fi, Ethernet, Mobile cell network
Operating Temperature	0 to 40° C
Power Supply	External, 100-240V, 50-60Hz

Applications

Our analyzers are changing labs worldwide:



Material Science and Chemical Engineering: Explore polymer additives, catalysts, and other industrial chemicals.



Environmental Monitoring: Detects pollutants in water, air, and soil, aiding regulatory compliance and sustainable research efforts.



Food and Beverage Industry: Quantify vitamins, preservatives, and additives to ensure product quality and safety.



Pharmaceutical Research: Analyze active pharmaceutical ingredients (APIs), excipients, and formulations with precision, supporting quality control and, stability testing., reaction monitoring, bio samples testing.supporting quality control and stability testing.



Academic Research: Provide students and educators with a hands-on tool for learning chromatographic principles and advancing scientific education.

Cromite™ HPLC System: Liquid Chromatography

Made Simple



Call to Action

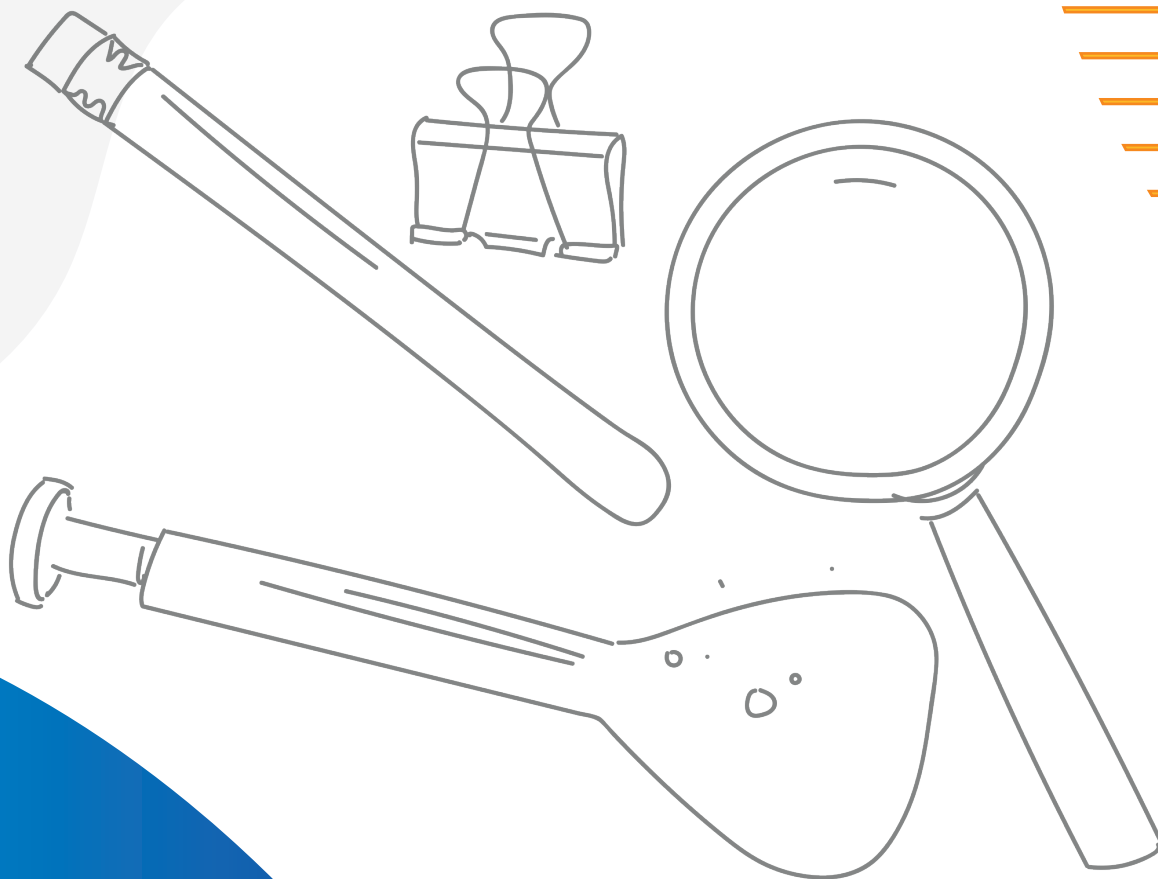
Unlock the potential of Cromite Analyzers for your lab today:

- Contact us to place an order or ask questions.
- Request a free method development consultation.
- Schedule a demonstration to see our analyzers in action.
- Visit our website or scan the QR code below for more details.

Conclusion

The Cromite™ HPLC System is high-quality solutions for laboratory research, delivering precision, convenience, and reliability. We offer free method customization tailored to your substances, live support, and seamless integration with the powerful HPLC.cloud software.

Learn more on our website or contact us for consultations and demonstrations.





Contact Us

For Product Information

Email: sales@sielc.com

For Accounts Payable:

Email: finance@sielc.com

Call: 847 229-2629

Fax: 847 655-6079

SIELC Technologies:

804 Seton Ct.

Wheeling, IL USA 60090

