

ChromQuest 5.0 Quick Reference Installation Guide (for the Windows 7 Operating System only)

The Thermo Scientific ChromQuest™ 5.0 chromatography data system (CDS) provides data acquisition, processing, and reporting, as well as instrument control of Thermo Scientific liquid chromatography (LC) and gas chromatography (GC) instruments.

To install the ChromQuest 5.0 CDS, the applicable ChromQuest licenses, and the required instrument updates for the Thermo Scientific family of LC instruments on a workstation computer with the Microsoft™ Windows™ 7 operating system installed, follow the instructions in this guide.

If you must install the ChromQuest 5.0 CDS on a Windows XP computer, only use the instructions in the *ChromQuest 5.0 Installation Guide* (P/N CHROM-97250) that is provided in the Manuals folder on the *ChromQuest 5.0 Full Install* CD-ROM.

IMPORTANT Do not install the instrument updates from the *ChromQuest 5.0 - Supplemental Disk for Windows 7* CD-ROM on a Windows XP workstation computer, as this installation is not supported by Thermo Fisher Scientific.

Note The Thermo Scientific LC instrument drivers were tested on Windows 7 computers in the ChromQuest workstation environment only (stand-alone instrument control mode). Thermo Fisher Scientific makes no claims regarding ChromQuest 5.0 operation in client/server environments.

Contents

- [ChromQuest Workstation Requirements](#)
- [Supported LC Devices](#)
- [Installing the Software](#)
- [Sample Installation Qualification Report](#)
- [Trademarks](#)

ChromQuest Workstation Requirements

To control a Thermo Scientific LC system in the Windows 7 operating system environment, the ChromQuest workstation computer must meet the software requirements listed in [Table 1](#) and the hardware requirements listed in [Table 2](#) on [page 2](#).

Table 1. Workstation software requirements

Software	Description
Operating system	<ul style="list-style-type: none">• Windows 7 Professional (32-bit) or• Windows 7 Ultimate (32-bit)
Chromatography data system	ChromQuest CDS 5.0 (workstation only)
Instrument updates	LC pumps (required), LC detectors (required), Accela™ Open Autosampler (if applicable)
Software licenses	ChromQuest 5.0 Data Handling license for two instruments Applicable instrument licenses: <ul style="list-style-type: none">• ChromQuest 5.0 Spectral Analysis license for a PDA detector or UV3000 detector• ChromQuest 5.0 Accela Open Autosampler license

Supported LC Devices

Depending on the LC devices to be controlled, the ChromQuest workstation computer must have the available communication ports listed in [Table 2](#).

Table 2. Workstation hardware requirements

Communication port	LC device
LAN port	Accela Autosampler and Accela detectors Surveyor™ Plus Autosampler, Surveyor LC Pump Plus, and Surveyor Plus detectors SpectraSYSTEM™ UV8000 PDA Detector
USB port	Accela Pump, Accela 600 Pump, and Accela 1250 Pump
RS-232 port	SpectraSYSTEM SN4000 controller UV3000 detector and UV6000 detector Accela Open Autosampler

Connecting the workstation computer to the company LAN or a public LAN requires an additional LAN card. The TCP-IP addressing scheme of the company LAN card cannot be 172.16.xxx.xxx. Connect only instruments to the instrument LAN card.

For information about the Thermo Scientific LC devices supported by the ChromQuest 5.0 CDS on a Windows 7 workstation computer, see these topics:

- [Accela Devices](#)
- [Surveyor Plus Devices](#)
- [SpectraSYSTEM Devices](#)
- [Additional Supported Devices](#)

Note ChromQuest 5.0 CDS installed on a Windows 7 computer does not support any of the Thermo Scientific fluorescence detectors.

The SpectraSYSTEM FL2000/3000 detector and the Surveyor FL Plus Detector are supported by the ChromQuest 5.0 CDS on a Windows XP computer.

Accela Devices

Make sure that the device has the appropriate firmware version and the workstation computer has the appropriate communication ports:

- The Accela detectors and the Accela Autosampler communicate with the data system computer by way of an Ethernet communication connection.
- The Accela Open Autosampler communicates with the data system computer through a serial communication connection.
- The Accela pumps communicate with the data system computer through a USB communication connection.

For more information about the hardware connections for an Accela LC system, refer to the *Accela LC System Getting Connected Guide*.

The ChromQuest 5.0 CDS supports the following firmware versions for the Accela devices.

Device	Firmware version (minimum supported)	Communication interface
Accela Open Autosampler	4.12	RS-232c
Accela Closed Autosampler	2.15	LAN
Accela Pump	12.47c	USB
Accela 600 Pump	23.40e	USB
Accela 1250 Pump	23.65f	USB
Accela PDA (20 Hz) Detector	2.02	LAN
Accela PDA (80 Hz) Detector	4.00	LAN
Accela RI Detector	1.20 Interface Board 6.60	LAN
Accela UV/Vis Detector	Converter Board ROM 1.08 Converter Board RAM 1.20 Main Detector Board 3.12	LAN

Surveyor Plus Devices

The supported Surveyor Plus devices communicate with the data system computer by way of an Ethernet connection, so the data system computer must have a LAN port.

For more information about the hardware connections for a Surveyor LC Plus system, refer to the *Surveyor LC Plus System Getting Connected Guide*.

The ChromQuest 5.0 CDS supports the following firmware versions for the Surveyor Plus devices.

Device	Firmware version (minimum supported)	Communication interface
Surveyor Autosampler Plus	2.15	LAN
Surveyor Autosampler Plus Lite	2.15	LAN
Surveyor LC Pump Plus	Converter Board ROM 1.08 Converter Board RAM 2.00 Main Pump Board 3.02	LAN
Surveyor PDA Plus Detector	2.02	LAN
Surveyor UV/Vis Plus Detector	Converter Board ROM 1.08 Converter Board RAM 1.10 Main Detector Board 3.12	LAN
Surveyor RI Plus Detector	Firmware: 1.10 Interface Board: 6.10	LAN

SpectraSYSTEM Devices

With the exception of the UV3000 and UV6000 detectors, the supported SpectraSYSTEM devices communicate with the data system computer through the SN4000 controller. The SN4000 controller and the UV3000 and UV6000 detectors communicate with the data system computer through an RS-232 connection.

To control a SpectraSYSTEM pump, autosampler, and a UV3000 or UV6000 detector, the data system computer must have two available RS-232 ports.

The ChromQuest 5.0 CDS supports the following firmware versions for the SpectraSYSTEM devices.

Device	Firmware version (minimum supported)	Communication interface
SpectraSYSTEM SN4000 controller	9.05	RS-232c (native port)
SpectraSYSTEM AS1000 autosampler	3.44.10	(SN4000)
SpectraSYSTEM AS3000 autosampler	3.44.30	(SN4000)
SpectraSYSTEM P1000 pump	4.01.10	(SN4000)
SpectraSYSTEM P1500 pump	4.02.15	(SN4000)
SpectraSYSTEM P2000 binary pump	4.03.20	(SN4000)
SpectraSYSTEM P4000 quaternary pump	4.04.40	(SN4000)
SpectraSYSTEM UV/Vis 1000 detector	3.09	(SN4000)
SpectraSYSTEM UV/Vis 2000 detector	3.13	(SN4000)
SpectraSYSTEM UV/Vis 3000 detector	3.21	RS-232c (native port)
SpectraSYSTEM UV6000 PDA detector	Main Board RAM 1.8 Main Board ROM (Mon960) 0.2 PIC processor 7.0	RS-232c (native port)
SpectraSYSTEM UV8000 PDA Detector	4.00	LAN

Additional Supported Devices

The ChromQuest 5.0 CDS supports the SS420X analog-to-digital converter.

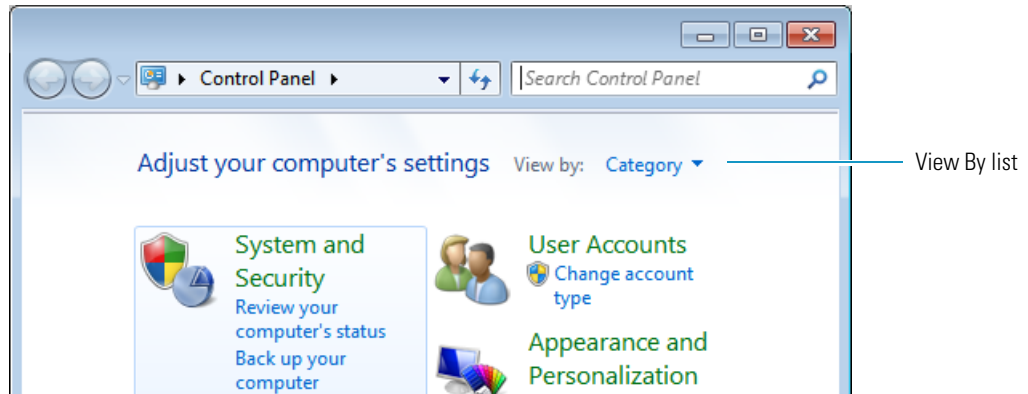
❖ To install the ChromQuest 5.0 CDS on a workstation computer with the Windows 7 operating system

1. Verify that the workstation computer has the Windows 7 Professional or Windows 7 Ultimate operating system installed, including all current service packs and updates.

IMPORTANT During the installation process, ensure that the Windows User Account Control (UAC) is turned off. If you install the ChromQuest 5.0 CDS with UAC turned on, the data system will not operate properly. If you have already installed the ChromQuest 5.0 CDS without first turning off UAC, turn off UAC and reinstall the data system.

2. Set the User Account Control setting to Never Notify as follows:
 - a. Log in to the workstation computer with a user account that has Windows 7 administrator rights and privileges.
 - b. From the Windows 7 Start menu, choose **Control Panel**.
The Control Panel window opens.

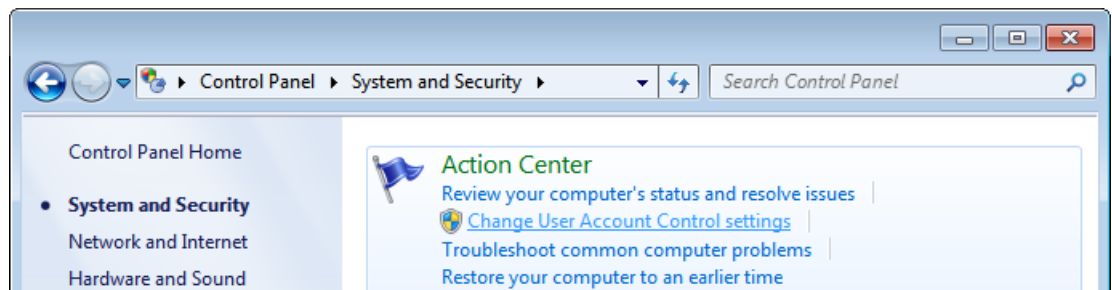
c. In the View By list, select **Category**.



d. Under Adjust Your Computer's Settings, click **System and Security**.

The System and Security window opens.

e. In the Action Center area, click **Change User Account Control Settings**.

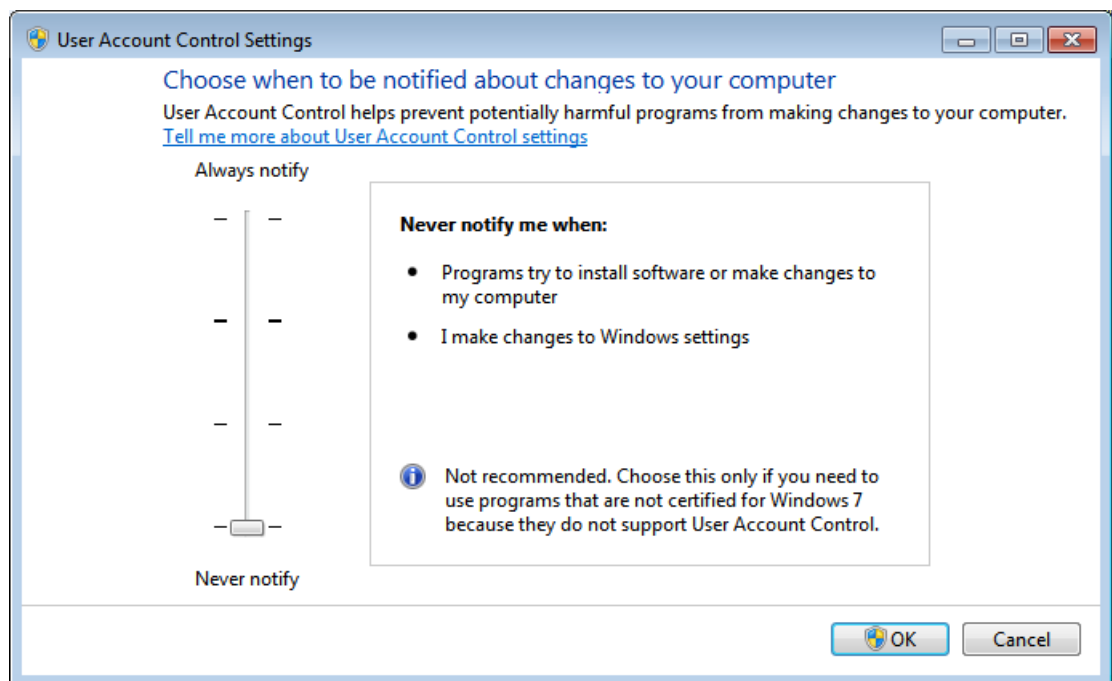


The User Account Control Settings window opens.

f. Record the current setting, so that you can restore it after the installation process.

Current setting: _____

g. If Never Notify is not selected, select it by moving the slider to the bottom of the bar. Then click **OK**.



h. Restart the workstation computer to enable the Never Notify setting.

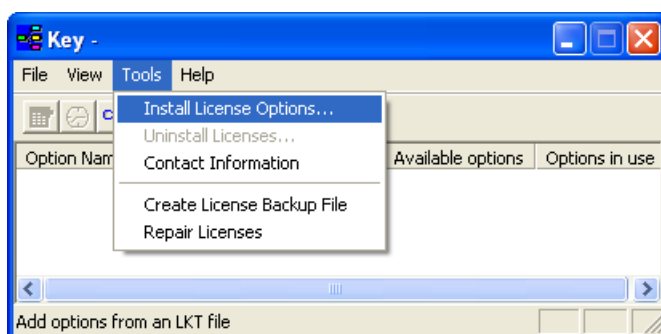
3. Install the ChromQuest CDS as follows:
 - a. Log in to the workstation computer with a user account that has Windows 7 Administrator rights and privileges.
 - b. Insert the *ChromQuest 5.0 Full Install* CD-ROM into the CD drive and proceed to install the ChromQuest software on the Windows 7 workstation computer.

The installation program runs automatically when you load the CD-ROM into the CD drive.

Tip You can also start the installation process by choosing **Run** from the Windows 7 Start menu, and then typing *drive:\CDInstaller.exe* (where *drive* is the CD drive letter) in the Run dialog box. If prompted by the installer, restart the computer.

4. Install the ChromQuest licenses (see [Table 1](#) on [page 1](#)) as follows:
 - a. Insert the license CD into the CD-ROM drive of the ChromQuest workstation computer.
 - b. From the Windows 7 Start menu, choose **All Programs > Chromatography > Key**.

The Key dialog box opens.



- c. From the menu bar, choose **Tools > Install License Options**.

The License Activation Wizard opens.

- d. Follow the wizard instructions.

When the wizard finishes, the key is ready for use.

After you install the ChromQuest CDS and the applicable ChromQuest licenses, the Key dialog box lists the installed options.

Data handling instrument licenses

Accela Open Autosampler license

Spectral Analysis license for a Thermo Scientific PDA detector or UV3000 detector

Option Name	Purchased options	Available options	Options in use
Vendor	Thermo Electron		
Version	21		
Instrument	2	2	0
Client Count	1	1	0
Offline	2	2	0
CTC PAL	1	1	0
HP 5890	2	2	0
HP 6890	2	2	0
HP Auto Sampler	4	4	0
OEM Auto Sampler	2	2	0
PDA	4	4	0
Super Compare	4	4	0
System Suitability	4	4	0
Thermo GC	2	2	0
Thermo LC	2	2	0

5. After completing the installation, confirm that the ChromQuest Software IQ Report passes by choosing **All Programs > Chromatography > Installation Qualification (IQ)** from the Windows 7 Start menu. To view an example Installation Qualification Report, see “[Sample Installation Qualification Report](#)” on page 9.

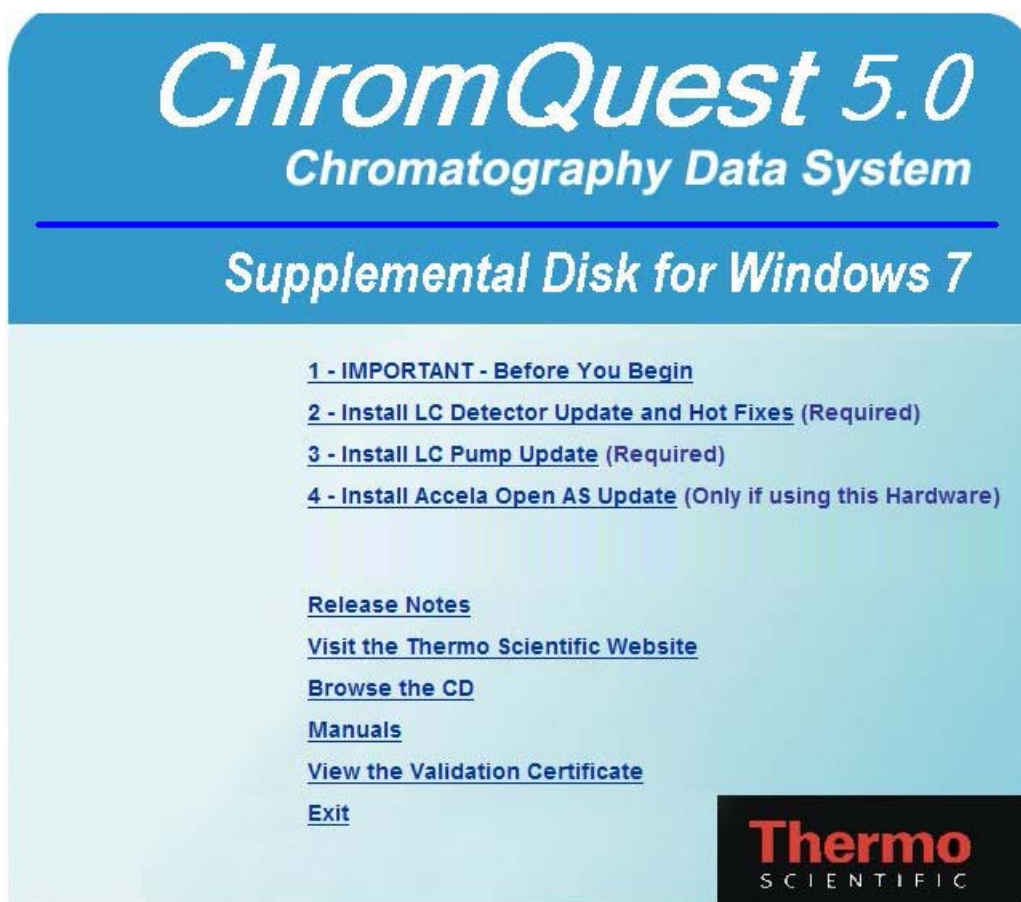
IMPORTANT Do not use the *ChromQuest 5.0 - Supplemental Disk for Windows 7* CD-ROM if you are installing the ChromQuest 5.0 CDS on a Windows XP computer, as this use is not supported by Thermo Fisher Scientific.

6. Install the instrument updates from the supplemental disk as follows:
- Insert the *ChromQuest 5.0 - Supplemental Disk for Windows 7* CD-ROM into the CD drive of the Windows 7 workstation computer.

The following startup screen appears.

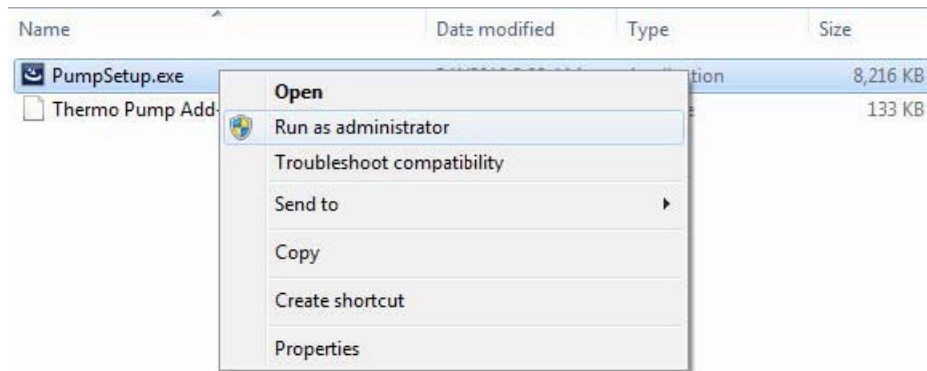
Tip You can also display the startup menu by choosing **Run** from the Windows 7 Start menu, and then typing *drive:\CDInstaller.exe* (where *drive* is the CD drive letter) in the Run dialog box.

Note Clicking 1 - IMPORTANT - Before You Begin opens the PDF file of this installation guide.



- Click **2 - Install LC Detector Update and Hot Fixes** and follow the prompts in the setup program to completion. Restart the workstation computer if prompted to do so.
- After the installation is complete, confirm that the ChromQuest Software IQ Report passes by choosing **All Programs > Chromatography > Installation Qualification (IQ)** from the Windows 7 Start menu. To view an example Installation Qualification Report, see “[Sample Installation Qualification Report](#)” on page 9.
- Return to the *Supplemental Disk for Windows 7* CD startup menu.

- e. Click **3 - Install LC Pump Update**.
- f. Right-click the file **PumpSetup.exe**, and then choose **Run As Administrator** from the shortcut menu as prompted.



- g. Follow the prompts through to completion.
 - h. After completing the installation, confirm that the ChromQuest Software IQ Report passes by choosing **All Programs > Chromatography > Installation Qualification (IQ)** from the Windows 7 Start menu.
7. If your LC system includes an Accela Open Autosampler, return to the startup menu and install the Accela Open Autosampler update as follows:
 - a. Click **4 - Install Accela Open AS Update**.
The setup program begins.
 - b. Follow the prompts through to completion.
 - c. If prompted to do so, restart the workstation computer after completion.
 - d. After completing the installation, confirm that the ChromQuest Software IQ Report passes by choosing **All Programs > Chromatography > Installation Qualification (IQ)** from the Windows 7 Start menu.
 8. Restore the original setting for the Windows User Account Control.
 - a. From the Windows 7 Start menu, choose **Control Panel**.
The Control Panel window opens.
 - b. Click **System and Security**.
The System and Security window opens.
 - c. In the Action Center area, click **Change User Account Control Settings**.
 - d. Return the slider to its original position (see [step 2f](#) on [page 5](#)).
 - e. Click **OK**.
 - f. Restart the workstation computer to enable the new UAC setting.

Sample Installation Qualification Report

Installation Qualification Report

Aug 03, 2011 02:06 PM

Installation Qualification Test: PASSED

Installed components

HotFix18
Chromquest_Base
HotFix01
HotFix04
HotFix16
HotFix32
SurveyorAddOn_5.0
CTCAddOn_3.3.2
CQHotFix01
CQHotFix02
Detectors_Addon_5.0
HotFix37
ThermoPumpAddOn_1.02.0800
CQHotFix03

Superseded components

RCNet_3.2.1_HF1
HotFix17

VALID Modules	Size	Checksum	Qualification Source
Accelari.ocx	65536	0xCFDACC58	Detectors_Addon_5.0
Accelariui.ocx	274432	0xFDFDF257B	Detectors_Addon_5.0
AccelaUVVis.ocx	237568	0xAB7F2039	Detectors_Addon_5.0
AccelaUVVisControlIF.ocx	98304	0xFDCF0E75	Detectors_Addon_5.0
AcqDUIBase.dll	184320	0xFBF8DC51	Chromquest_Base
AIA.dll	94208	0x8B4F151B	HotFix04
alg.dll	221184	0x73DF6057	Chromquest_Base
AnalogDet.dll	22528	0x5D74C41F	Chromquest_Base
ASDUIBase.dll	114688	0xD9EF36DA	Chromquest_Base
AutoTray.ocx	229376	0xE7F1FF76	Chromquest_Base
BaselineCheckRepTable.rtb	34816	0xB5FFE494	Chromquest_Base
BatchDoc.dll	897024	0xCFB88C44	HotFix37
BatchRepTable.rtb	126976	0xFAFF4583	Chromquest_Base
BootPServerDCP.dll	48128	0xD9BE4708	Chromquest_Base
CalibRepTable.rtb	57344	0xFB3275DE	Chromquest_Base
ChromatographyReports.dll	192512	0xFE159BAD	Chromquest_Base
ChromDataDoc.dll	466944	0x9DEB7A15	Chromquest_Base
ChromObj.DLL	425984	0xF87B26E1	Chromquest_Base
ChromParams.dll	126976	0x55FEA0B5	Chromquest_Base
ChromRepGraph.ocx	622592	0xDBAF4F48	Chromquest_Base
CmdBase.dll	462848	0xDAE66DE9	Chromquest_Base
ConfigRepTable.rtb	27648	0xFFCEBE76	Chromquest_Base
CSMain.exe	495616	0xF6EBFC45	Chromquest_Base
CtrlReg.exe	36864	0xFFF9CAAEE	Chromquest_Base
CustomParamScript.dll	72192	0x37EB6E58	Chromquest_Base

DataFileCvt.AIA	37888	0x7EFFF54F	Chromquest_Base
DataFileCvt.BIO	43008	0x3FFA64A2	Chromquest_Base
DataFileCvt.CE	28160	0xDEFFD192	Chromquest_Base
DataFileCvt.CHEM	38912	0xFADBFF8C	Chromquest_Base
DataFileCvt.HPL	23040	0x5EC772E7	Chromquest_Base
DataFileCvt.MS	49152	0xB5F9F611	Chromquest_Base
DataFileCvt.PTS	47104	0xBB73DED1	Chromquest_Base
DataFileCvt.SSAscii	57344	0xEFBE7472	Chromquest_Base
DataFileCvt.SSI	43008	0x37FF8AB4	Chromquest_Base
DataFileCvt.TSP	151552	0x6FB768C6	Chromquest_Base
DataFileCvt.TurboChrom	73728	0x7DCF1DAB	Chromquest_Base
DataHandler.dll	135168	0xEFD95B99	Chromquest_Base
DCOMPermissionsHelper.DLL	42496	0xFFD7B620	HotFix32
DCOMServerSettings.exe	42496	0xE5EB252D	Chromquest_Base
DetDUIBase.dll	61440	0xDAB4B365	Chromquest_Base
DUIBase.dll	147456	0x53DBC7BF	Chromquest_Base
EventDUI.dll	208896	0x73DF409E	Chromquest_Base
ExcelExport.dll	86016	0xBD9DA18B	Chromquest_Base
ExternalCustomization.dll	307200	0xFFB3A9F5	Chromquest_Base
ExtraSeqColRepTable.rtb	19968	0x7BE7CDA2	Chromquest_Base
FControl2.dll	167984	0xDB7B179A	Chromquest_Base
Fglobal.dll	340014	0xF54FD9B7	Chromquest_Base
Fileio.dll	1196077	0xA00FCF17	Chromquest_Base
finDB.dll	69632	0x335779CA	Chromquest_Base
finSSClientLib.dll	69632	0xFC7B08B9	Chromquest_Base
FractionReportTable.rtb	20992	0x7ECBC139	Chromquest_Base
FRCGraphics.dll	67584	0xBF5FA409	Chromquest_Base
Fregistry.dll	106544	0xEB5F03F2	Chromquest_Base
GCDUIBase.dll	21504	0x77FD4659	Chromquest_Base
GenericDCP.dll	262144	0x971F5CC1	Chromquest_Base
GenericDUI.dll	430080	0xD777372B	Chromquest_Base
GenericIFace.IFace	155648	0xEDEA0E40	Chromquest_Base
GenericRepTable.rtb	49152	0x3F7ECD05	Chromquest_Base
GenericVSM.dll	229376	0xCFE176FF	Chromquest_Base
GPIBLinkLayer.dll	53248	0xCBDF7468	Chromquest_Base
GraphObj.dll	315392	0xEF9FCF99	Chromquest_Base
GraphObjectIFace.dll	50176	0xF3F79CCB	Chromquest_Base
Hwaremgr.dll	35328	0xFFFF4C9A	Chromquest_Base
HWBase.dll	23040	0x3FDF53EF	HotFix37
IMPLODE.DLL	17920	0xCBDF6915	Chromquest_Base
inst.exe	2007040	0xDBDF8B4F	HotFix37
instcfg.dll	114688	0x5DEEAF0	HotFix37
InstrumentControl.dll	53248	0x7FFF86EB	Chromquest_Base
Key.exe	204800	0x7BD39B8B	Chromquest_Base
LabPatrolOption.dll	26624	0x77BFC26A	Chromquest_Base
LCConsoleIFace.IFace	53760	0x874F2091	Chromquest_Base
lcsrvr.dll	1249280	0xEF5F299F	SurveyorAddOn_5.0
LibSearchRepTable.rtb	102400	0x9FA6C1FE	Chromquest_Base
LogViewer.exe	69632	0xE9F9C58B	Chromquest_Base
LogViewRepTable.rtb	57344	0xF7EE86E5	Chromquest_Base
MethodDoc.dll	98304	0x3E3B31F5	Chromquest_Base
MethodRepTable.rtb	61440	0x97FF1850	Chromquest_Base
MS.DLL	303104	0xB7767B5B	Chromquest_Base
MSSpecGraphOCX.DLL	69632	0xBFFB1DC4	Chromquest_Base
MSSpectrumReportTable.rtb	86016	0x9FFE5F8D	Chromquest_Base
NetpoolUpdate.exe	36864	0xF9B8FC81	Chromquest_Base

OCX3DDataGraph.ocx	163840	0xDFBC20A6	Chromquest_Base
OCXCalibGraph.ocx	81920	0xFADFBF36	Chromquest_Base
OCXContourGraph.ocx	192512	0xBF903CDC	Chromquest_Base
OcxResultSignoff.ocx	94208	0xFA7D9AA2	Chromquest_Base
OEMFolderAccess.dll	27648	0xF3BD7EC1	Chromquest_Base
OEMInterface.SSI	831488	0x3B0C63F2	Chromquest_Base
PAL.ocx	409600	0xE1B9AF63	CTCAddOn_3.3.2
PALControl.ocx	266240	0x3BFD448C	CTCAddOn_3.3.2
PalIcons.dll	24576	0x7CFD8384	CTCAddOn_3.3.2
ParamsIFace.dll	43008	0xF7F998D5	Chromquest_Base
PDALoader.IFace	37888	0x3FFE3827	Chromquest_Base
PDAManager.dll	1015808	0x57FCCC3D	HotFix16
PeakGroupRepTable.rtb	102400	0x7F73258D	Chromquest_Base
PretreatRepTable.rtb	27648	0xFDFDBA75	Chromquest_Base
PurityRepTable.rtb	90112	0xFE9DB123	Chromquest_Base
RCNetDUI.dll	712704	0xDDBFCC02	HotFix18
rs232linklayer.dll	23552	0xDCBF768C	Chromquest_Base
SAControls.dll	770112	0x7DBF3E02	Chromquest_Base
SAControls.tlb	111296	0xD3FF7EFD	Chromquest_Base
SADataServices.dll	53298	0xB7989CFB	Chromquest_Base
SAProviderServer.dll	168016	0xF1DF08A5	Chromquest_Base
SAProviderServer.tlb	40168	0xF97E243F	Chromquest_Base
SASierraProvider.dll	233524	0x2CFAF2CB	Chromquest_Base
SASierraProvider.tlb	4796	0xB2EEBE03	Chromquest_Base
SAXcaliburProvider.dll	217142	0xEEB71985	Chromquest_Base
SEC.dll	430080	0xDFFFCCAE	Chromquest_Base
SignoffRepTable.rtb	25600	0xD9FDF3E7	Chromquest_Base
SocketLinkLayer.dll	28672	0x735F508A	Chromquest_Base
SpectralLibDefRepTable.rtb	48640	0x37BD2425	Chromquest_Base
SpectrumRepTable.rtb	94208	0x63FF93F6	Chromquest_Base
SS420xAcqDUI.dll	114688	0xBFF4A675	Chromquest_Base
SS420xCommon.dll	90112	0xBBAD07D5	Chromquest_Base
SS420xDCP.dll	110592	0xBFF9217A	Chromquest_Base
SS420xEventDUI.dll	106496	0x3ABE34EB	Chromquest_Base
SS420xIFConfig.dll	61440	0xFEEFDD71	Chromquest_Base
ssibase.dll	1236992	0xB9EB29E6	Chromquest_Base
SSIComm.ocx	40960	0x7BF32D05	Chromquest_Base
SSIConstantValue.dll	22016	0xFF781B3E	Chromquest_Base
ssidcpbase.dll	241664	0x3CA7EDC8	Chromquest_Base
ssidcpserver.exe	77824	0xBFB9C7D1	Chromquest_Base
SSIDebug.dll	65536	0xFAE90439	Chromquest_Base
SSIEnterprise.dll	438272	0xBFCBB8A4	Chromquest_Base
SSIGridBase.dll	90112	0xFE670B8C	Chromquest_Base
SSIMath.dll	24576	0x6E3F0080	Chromquest_Base
SSIOpenGL.dll	110592	0x7CB6B333	Chromquest_Base
SSIPlatformNT.exe	159744	0x7BF72D47	HotFix01
ssisecurity.dll	327680	0xF2BBCA10	Chromquest_Base
SSISocket.ocx	36864	0xBF7DBDD3	Chromquest_Base
SSIUsers.dll	28672	0xFEED54DC	Chromquest_Base
SSIVsm.dll	20480	0xDF7A4B1C	Chromquest_Base
SSPV.dll	98304	0x9FADDD10	SurveyorAddOn_5.0
SSS32.DLL	475195	0xEBAF1F8B	Chromquest_Base
survbase.dll	253952	0xDFDB0188	Detectors_Addon_5.0
SurveyorAS.ocx	1007616	0x77FF587B	CQHotFix01
SurveyorASControlIF.ocx	114688	0xBFFBA8F3	SurveyorASControlIF
SurveyorPlusCtrl.ocx	478208	0x77FB6A77	ThermoPumpAddOn_1.02.0800

SurveyorPlusIcons.dll	206848	0xB8EE9525	ThermoPumpAddOn_1.02.0800
SurveyorPlusUI.ocx	779776	0xFE3D0918	ThermoPumpAddOn_1.02.0800
SurvLCPump.ocx	565248	0xFFDB6D7A	SurveyorAddOn_5.0
SurvPda.dll	307200	0xFEFC71A4	SurveyorAddOn_5.0
SurvPdaAcq.dll	81920	0xFFFFED48D	SurveyorAddOn_5.0
SurvPdaDcp.dll	65536	0xFE7D4BD	SurveyorAddOn_5.0
survpdaplus.dll	356352	0xFF99142E	Detectors_Addon_5.0
survpdaplusacq.dll	81920	0xEFFD642D	Detectors_Addon_5.0
survpdaplusdcp.dll	77824	0xA8339683	Detectors_Addon_5.0
SurvUVVis.ocx	237568	0xBFFFA8EC	SurveyorAddOn_5.0
SurvUVVisControlIF.ocx	98304	0x30799DCC	SurveyorAddOn_5.0
SysAdmin.dll	507904	0xF77F8106	Chromquest_Base
SysAdminBase.dll	192512	0xFFE79B78	Chromquest_Base
SysSuit.DLL	102400	0xFD7C21CA	Chromquest_Base
SystemCheckRepTable.rtb	35328	0xEFCE39F4	Chromquest_Base
TemplateReports.IFace	675840	0xD2FEFEC2	Chromquest_Base
TER32.dll	892928	0x7DBF0539	Chromquest_Base
ThermoConfigConverter.cfgenv	20480	0x5BF787EB	Chromquest_Base
ThermoPeakPurity.dll	106496	0xFFE6C050	CQHotFix02
Utils.dll	40960	0x6F7BEF4A	Chromquest_Base
UIBase.dll	491520	0x79FF4713	Chromquest_Base
ViewChangeLog.dll	253952	0x87FC5B0B	Chromquest_Base
VSMBase.dll	45056	0xFFBFD490	Chromquest_Base
WatchDogHelper.dll	30208	0xAFF7BB87	Chromquest_Base
WatchDogServer.exe	77824	0x9DFFB76D	Chromquest_Base
WCL\Holmium12.WCL	213	0xEDFF17D7	SurveyorAddOn_5.0
WCL\Holmium5.WCL	115	0xC7DF1D36	SurveyorAddOn_5.0
WCL\Holmium7.WCL	143	0xDBFD67C1	SurveyorAddOn_5.0
WCL\HolmiumUV.WCL	118	0xA7BE6990	SurveyorAddOn_5.0
XMLRepTable.rtb	57344	0xD9F555A8	Chromquest_Base
XRawfile2.dll	155648	0xFABF9263	Chromquest_Base

Trademarks

SpectraSYSTEM is a trademark and Accela, Surveyor, and ChromQuest are registered trademarks of Thermo Fisher Scientific Inc. in the United States.

Microsoft and Windows are registered trademarks of Microsoft Corporation in the United States and other countries.

All of the other trademarks are the property of Thermo Fisher Scientific Inc. and its subsidiaries.