

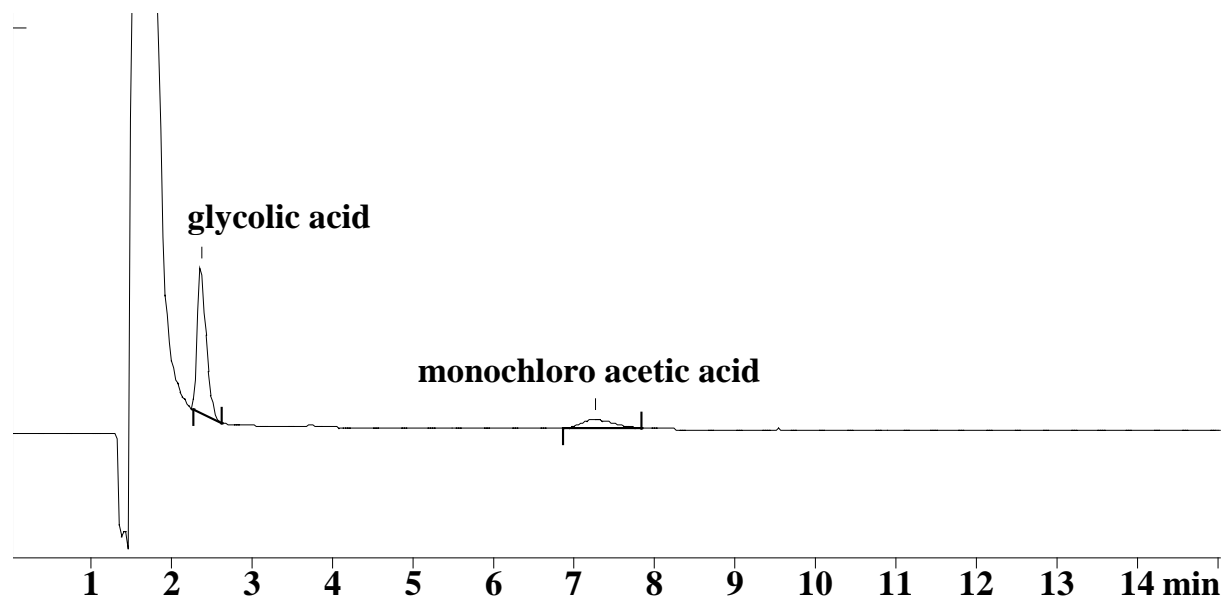
IC Application Note No. O-2

Title: Glycolic acid and monochloro acetic acid in cocoamidopropyl betaine

Summary: Determination of glycolic acid and monochloro acetic acid in cocamidopropyl betaine using ion exclusion chromatography with direct conductometric detection.

Sample: Cocoamidopropyl betaine
Sample Preparation: Dilution 1:1000

Column: 6.1005.030 Hamilton PRP X-300 Ion Exclusion Column
Eluent: 0.2 mmol/L sulfuric acid
Flow: 1.0 mL/min
Injection Volume: 100 µL



Results:	glycolic acid g/L	monochloro acetic acid g/L
	3.64	0.926