

IC Application Note No. N-68

Title: Cyanide in effluent

Summary: Determination of cyanide in effluent applying anion chromatography with direct conductivity detection.

Sample: Effluent

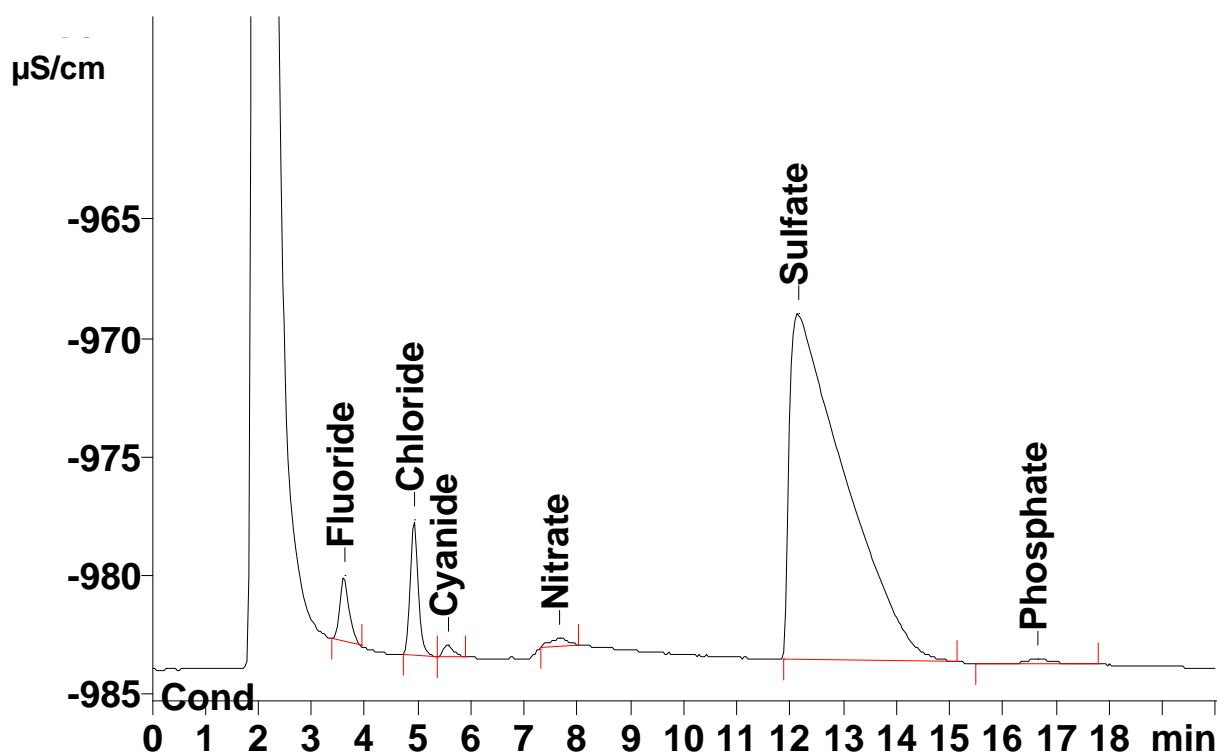
Sample Preparation: Direct injection through the MCS (Metrohm CO₂ Suppressor)

Column: 6.1006.100 Metrosep Dual 2

Eluent: 5.0 mmol/L sodium hydroxide

Flow: 0.7 mL/min

Injection Volume: 100 µL



Results:	Fluoride	Chloride	Cyanide µg/L	Nitrate	Sulfate	Phosphate
	n.q.	n.q.	253	n.q.	n.q.	n.q.