

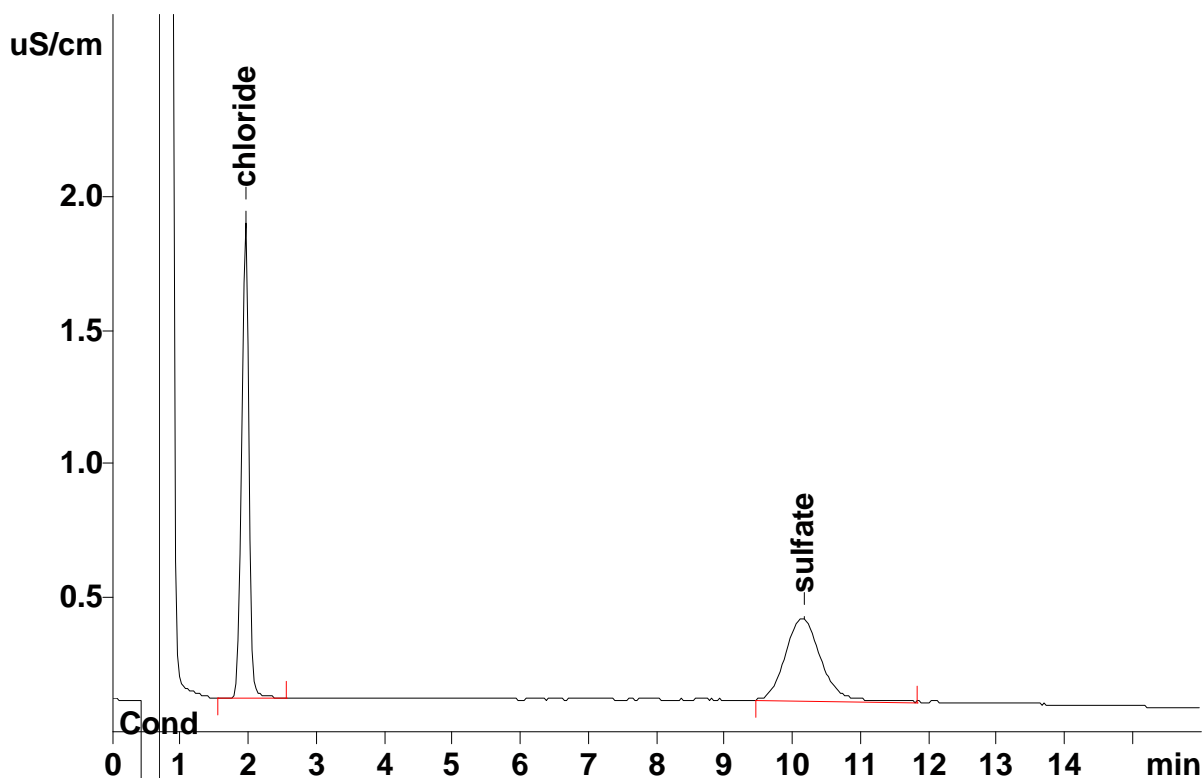
IC Application Note No. N-57

Title: Chloride and sulfate in reactive dye

Summary: Determination of chloride and sulfate in a reactive dye using anion chromatography with direct conductivity detection. Suppressed IC doesn't work as the dye is hydrolysed in alkaline solution and releases sulfate.

Sample: Anionic reactive dye with sulfonyl group
Sample Preparation: 25 mg of sample was dissolved in 50 mL ultrapure water (dilution 1:2000)

Column: 6.1005.000 PRP X-100
Eluent: 2 mmol/L phthalic acid / 10 % acetone / pH 5 (NaOH)
Flow: 2.0 mL/min
Injection Volume: 100 µL



Results:	Chloride g/kg	Sulfate g/kg
	6.07	4.62