

IC Application Note No. N-51

Title: Acetate, chloride, citrate and sulfate in a concentrate of an infusion solution containing amino acids and dipeptides

Summary: Determination of acetate, chloride, citrate and sulfate in a concentrate of an infusion solution using anion chromatography with direct conductivity detection. Non-suppressed IC is used to avoid interferences by the amino acids.

Sample: Concentrate of an infusion solution containing: 75 g/L amino acids, 30 g/L dipeptides, 1g/L citric acid

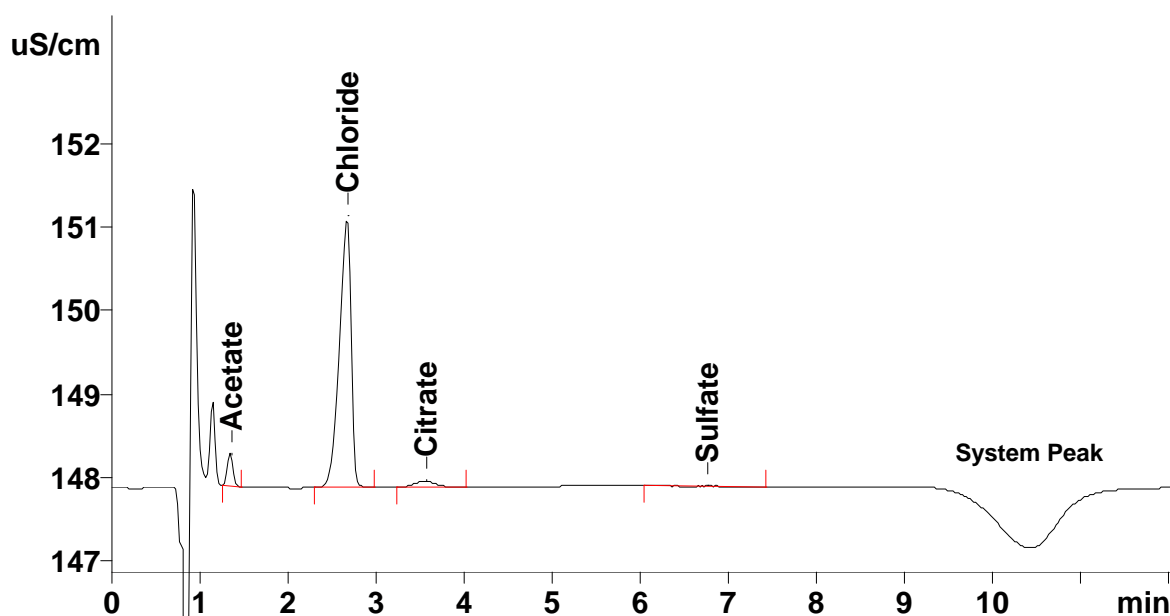
Sample Preparation: Dilution 1 : 50 with eluent

Column: 6.1009.000 Super-Sep Anion

Eluent: 2.5 mmol/L phthalic acid, 2% acetonitrile
pH = 4.2 (TRIS)

Flow: 1.5 mL/min

Injection Volume: 20 μ L



Results:	Acetate g/L	Chloride g/L	Citrate g/L	Sulfate g/L
Sample	2.710	1.600	1.095	n.q.