



Metrosep A Supp 19

The column that sets a new standard in anion exchange performance

HIGHLIGHTS

- Inorganic anions and low molecular weight organic acids in one run
- Exceptional separation capabilities
- High capacity for excellent compatibility with complex sample matrices
- Strong thermal, mechanical and chemical stability
- Universal applicability

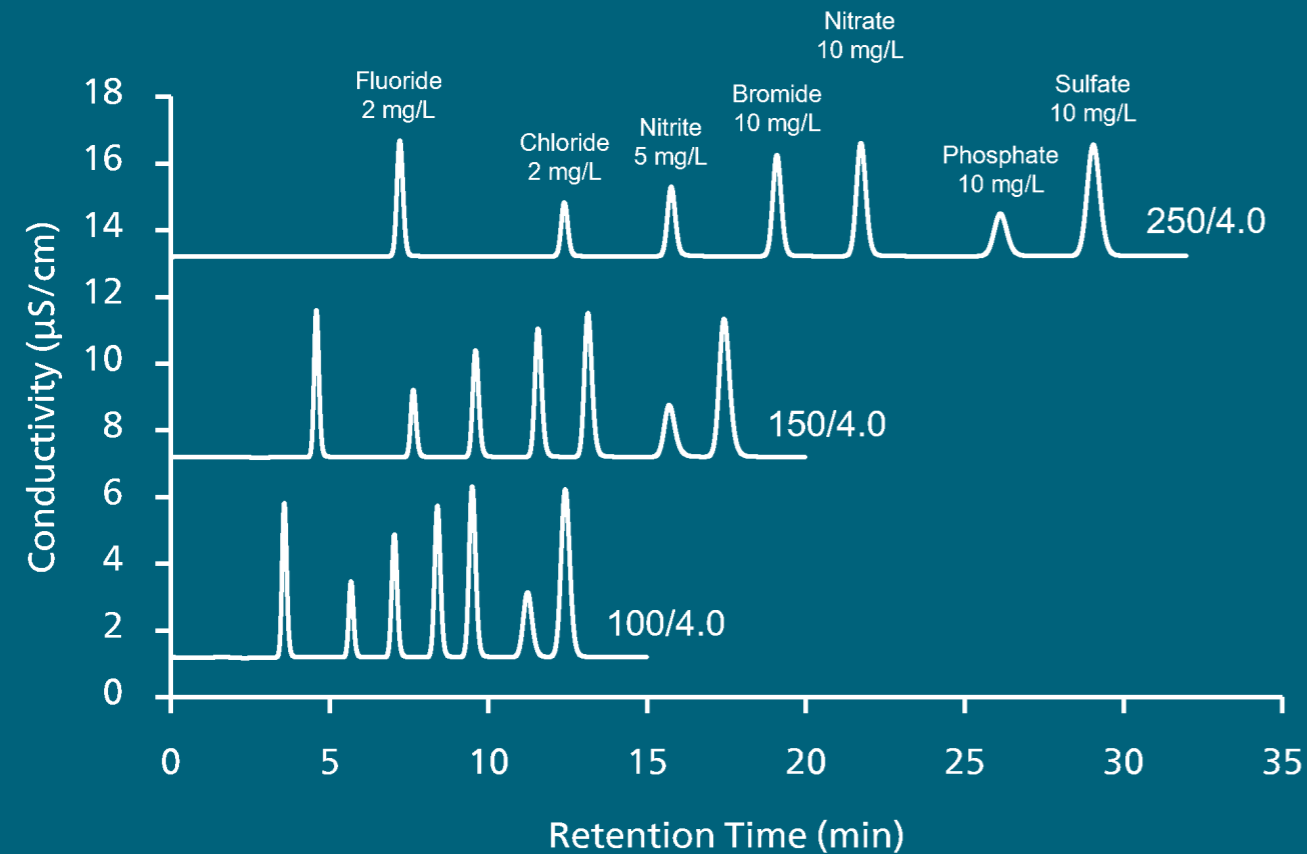


Metrosep A Supp 19 – determination of inorganic anions and low molecular weight organic acids with an unmatched performance

The Metrosep A Supp 19 column family sets a whole new standard in performance for anion exchange chromatography. The column material consists of a hydrophilized polystyrene divinylbenzene copolymer with quaternary ammonium groups, which leads to exceptional peak shapes. Combined with excellent selectivities, this column can be used to tackle even the most difficult separation challenges.

THE FIELD OF APPLICATION OF THE METROSEP A SUPP 19 IS EXTREMELY WIDE. SELECTED EXAMPLES ARE:

- Determination of standard anions (fluoride, chloride, nitrite, bromide, nitrate, phosphate and sulfate) in any water sample, fulfilling US EPA 300.1A and DIN ISO 10304-1;
- Isocratic determination of standard anions and organic acids in boiler feed water to ensure the safe operation of power plants;
- Determination of standard anions and organic acids in complex sample matrices, such as environmental or food samples;
- Determination of standard anions in pharmaceutical samples.



EXCEPTIONAL SEPARATION CAPABILITY

- Sharp and symmetric peaks
- High resolution between peaks



STABLE PACKING AND LONG LIFETIME

- Monodisperse, 4.6 µm particles
- Dense packing of stable particles



UNIVERSAL APPLICABILITY




- Excellent separation efficiency
- Manyfold options to tune the selectivity



HIGH ROBUSTNESS AGAINST COMPLEX MATRICES

- High capacity minimizes sample matrix effects
- Full compatibility with organic modifiers and extreme pH

ORDERING INFORMATION

6.01034.410	Metrosep A Supp 19 - 100/4.0	
6.01034.420	Metrosep A Supp 19 - 150/4.0	
6.01034.430	Metrosep A Supp 19 - 250/4.0	
6.01034.500	Metrosep A Supp 19 Guard/4.0	