

Effect of Flow Rate on Oligomer Separation Using Agilent PLgel and GPC/SEC

Technical Overview

Introduction

In gel permeation chromatography, the resolution of oligomers improves as flow rate is reduced. However, the run time is obviously increased as a result. This effect is demonstrated using an Agilent PLgel 5 μm column with three different flow rates.

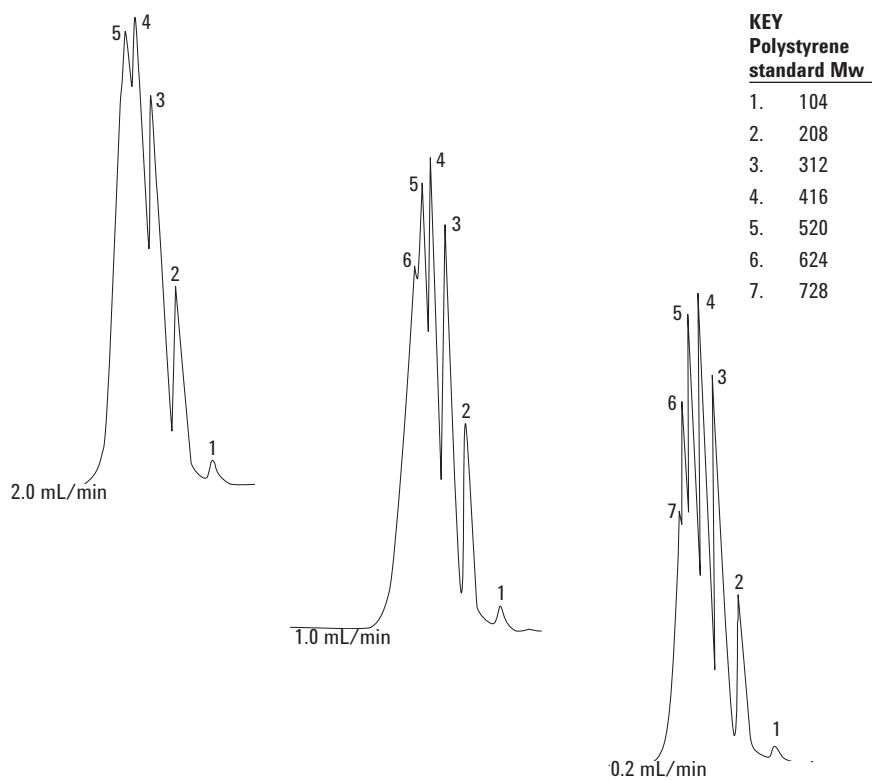


Figure 1. Separation of polystyrene standards on an Agilent PLgel 5 μm column to illustrate the effect of different flow rates



Conditions

Calibrants	Agilent Polystyrene Standard 480
Columns	Agilent PLgel 5 μm 100Å, 300 \times 7.5 mm (p/n PL1110-6520)
Eluent	THF
Detector	RI
System	Agilent PL-GPC 50

GPC/SEC columns and calibrants from Agilent

Agilent offers a comprehensive portfolio of GPC/SEC columns and calibrants for high-performance separations based on molecular size in solution. Agilent delivers leading solutions for characterizing and separating polymers by GPC/SEC, and manufactures all components for accurate polymer analysis.

Look at the Agilent Literature Library on www.agilent.com/chem/gpc-sec for a comprehensive range of application notes and technical overviews to help you get the best from your Agilent GPC/SEC columns and instruments.

www.agilent.com/chem

Agilent shall not be liable for errors contained herein or for incidental or consequential damages in connection with the furnishing, performance, or use of this material.

Information, descriptions, and specifications in this publication are subject to change without notice.

© Agilent Technologies, Inc., 2015
Printed in the USA
April 30, 2015
5990-8226EN



Agilent Technologies