

Zeeman Shroud-Electrode Upgrade Kit for the GTA 120 Instruction Sheet

The Zeeman Shroud-Electrode upgrade kit extends the tube lifetimes in GTA 120Z instruments. The kit includes:

- Alignment checking tool, 5 mm
- Alignment checking tool, 4 mm*
- Zeeman pyro-coated shroud
- Zeeman narrow bore electrodes
- Instruction sheet.

*The 4 mm alignment tool can be distinguished by four grooves on the probe and spacer.

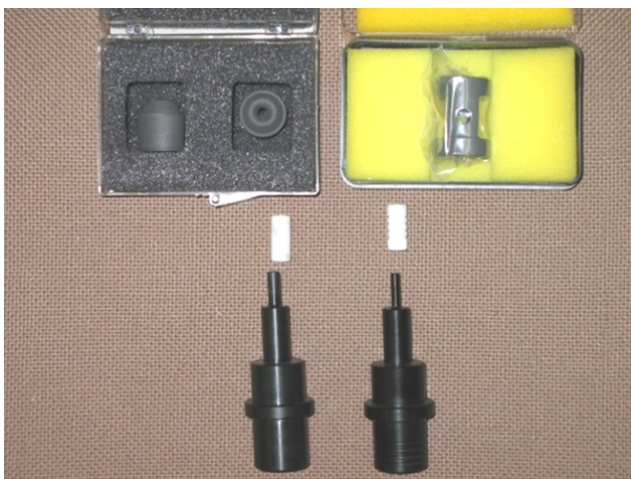


Figure 1. Kit contents: The 5 mm alignment checking tool is shown in the bottom left; and the 4 mm alignment checking tool (with grooves on the black probe and white spacer) is shown in the bottom right



Checking Workhead Alignment

WARNING



Hot Surface Hazard

The surface of the workhead can be very hot. Allow it to cool for a few minutes before touching or removing it.

To check the workhead alignment:

- 1 Remove the work head from the instrument and place it on a bench.
- 2 Remove the two end windows from the workhead (refer to Figure 2).

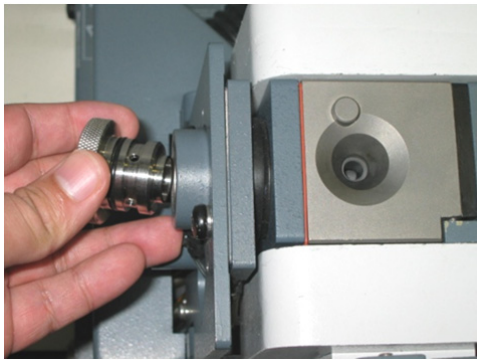


Figure 2. Removing an end window

- 3 Insert the spacer into the shroud. Use the 5 mm alignment checking tool for workheads fitted with wide bore electrodes. Use the 4 mm tool for workheads with narrow bore electrodes (refer to Figure 3).

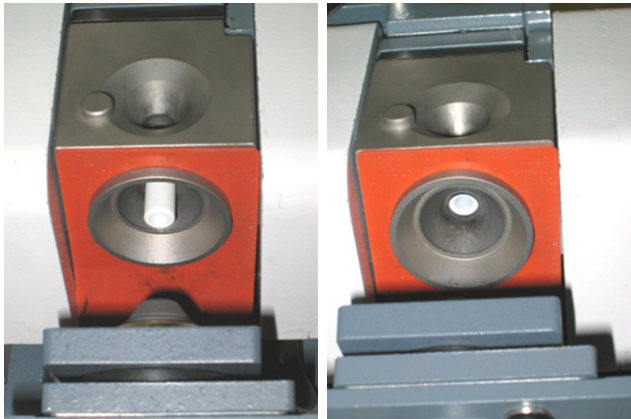


Figure 3. Inserting the spacer into the shroud

- 4 Close the workhead.

- 5 Insert the probe through the electrode holder as far as possible (refer to Figures 4 and 5). Do not force the probe. If the rim of the probe is not reached, the workhead has poor alignment (refer to Figure 6).



Figure 4. Inserting the probe to check workhead alignment

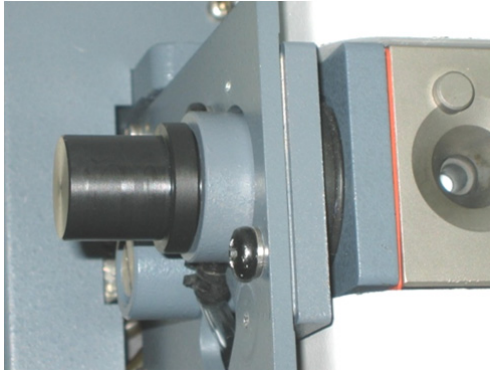


Figure 5. Workhead with good alignment

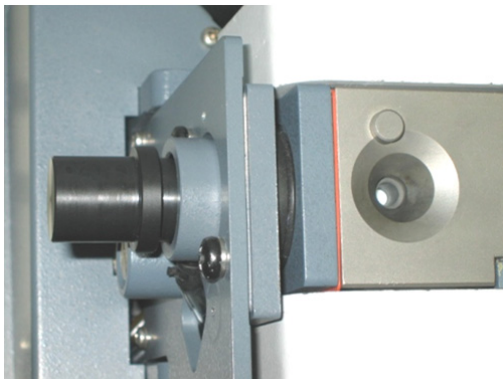


Figure 6. Workhead with poor alignment

- 6 Repeat Step 5 for the other side of the workhead (see Figure 7).



Figure 7. Opposite side of the workhead

7 If the workhead has good alignment:

Replace the shroud and electrodes with those supplied in the upgrade kit. Use the shroud removal tool and electrode extractor tool.

If the workhead has poor alignment:

Order a replacement workhead, as it cannot be re-aligned. The replacement workhead will have the new shroud and electrodes factory-fitted so you do not have to install the upgrade kit. Once you have received the replacement, return the faulty workhead.

This information is subject to change without notice.



8510225100

Part Number: 851022510

Edition 08/12

Issue 4

© Agilent Technologies, Inc. 2005, 2010
and 2012

Agilent Technologies
679 Springvale Road
Mulgrave, VIC 3170



Agilent Technologies