

Agilent 1290 Infinity II Preparative Open-Bed Fraction Collector

COLLECT EACH AND EVERY DROP



A NEW BENCHMARK IN LC PURIFICATION

Collect all your target compounds efficiently with the new Agilent 1290 Infinity II Preparative Open-Bed Fraction Collector and set new benchmarks in your semi-preparative and preparative-scale LC purification workflows. This new Agilent module facilitates automated, high-capacity fraction collection while occupying a minimum of bench space.

Highest efficiency for your LC purification workflow

At Agilent, we are passionate about helping you to solve your purification challenges:

- **Maximize Purification Efficiency**
Lowest delay volumes minimize peak dispersion and carryover – for highest recovery and purity.
- **Maximize Instrument Efficiency**
Variable bed configuration enables collection of up to 432 individual fractions or a volume up to 5.9 liters – for high flexibility and throughput.
- **Maximize Laboratory Efficiency**
Highest fraction capacity per module optimizes bench space and the capability to cluster up to four fraction collectors – for current and future application requirements.

LOWEST DELAY VOLUMES

Pre-configured tubing kits optimize performance at any flow rate and enable easy setup while minimizing peak dispersion and carryover between fractions. The unique automated delay sensor ensures accurate peak collection.

EFFICIENT COLLECTION

Fast vessel-to-vessel movement with novel X-Z-theta probe minimizes sample loss during movement between vessels.

**BIO
INERT**

BIO-INERT

Completely metal-free flow path makes this open-bed fraction collector also an ideal solution for protein purification.

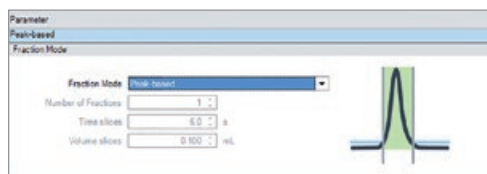
INSTANT INFORMATION

Indicators on each drawer give you loading status, current activity, and accessibility.



ACCURATE COLLECTION MODES

Fraction triggering based on time, peak, or mass facilitates accurate and reproducible fraction collection throughout each and every run.



UNMATCHED FLEXIBILITY

Collect your fractions in the vessel type best suited for your application. Use tube sizes of 12, 16, 25 or 30 mm outside diameter with lengths of 100 or 150 mm.

EASY SETUP

Drawers and racks include ID tags for fast setup and accurate identification.

INCREASED CAPACITY

Up to three drawers each hold two racks.



Learn more

www.agilent.com/chem/open-bed-fc

Find an Agilent customer center

www.agilent.com/chem/contactus

USA and Canada

1-800-227-9770

agilent_inquiries@agilent.com

Europe

info_agilent@agilent.com

Asia Pacific

inquiry_lsca@agilent.com

This information is subject to change without notice.

© Agilent Technologies, Inc. 2016
Published in the USA, October 1, 2016
5991-7225EN

